

EWG Farm Subsidy Database

Corporate Subsidy Recipients **1** to **2** of **2** in South Dakota

Business Name: **OGLALA SIOUX**

Rank	Name	Location	Subsidy Total 1995-2010
1	Oglala Sioux Tribe	Pine Ridge, SD 57770	\$ 35,654.00
2	Oglala Sioux Parks & Recreation	Kyle, SD 57752	\$ 28,956.00

Note: The information on conservation spending for 2010 is incomplete due to missing data from USDA's Natural Resource Conservation Service. Payment data currently are not included for the Environmental Quality Incentives Program, but will be added once NRCS makes it available.

The information provided for the Wetland Reserve Program (WRP) provides an inaccurate picture of how WRP payments are distributed. USDA's Natural Resource Conservation Service uses title companies as intermediaries to finalize wetlands easements under the Wetlands Reserve Program. As a result, the data provided to us shows large sums of money going to these title companies. In reality, the payments are ultimately distributed to landowners participating in the WRP.

Unfortunately, NRCS has not provided the data to show where these farms and wetlands are located or which farmers or landowners are enrolling in the program, so EWG is unable to allocate these large sums of money to individuals beyond the title companies. Therefore, these companies skew the conservation rankings and payment concentration, which EWG cannot avoid unless and until NRCS makes available the additional farm attribution data. Therefore, we have not included WRP payments in the 2010 data update.

Finally, we have separated data on farm commodity, disaster and conservation payments in order to provide a more accurate picture of top recipients and concentration of payments among the three main categories of USDA programs.



USDA subsidy information for **Oglala Sioux Parks & Recreation**

Addresses on file with USDA for Oglala Sioux Parks & Recreation

USDA county office from which subsidies were paid:	Subsidy Payments 1995-2010	Most recent address on file in USDA county office
Shannon County, South Dakota	\$28,956	Oglala Sioux Parks & Recreation Kyle, SD 57752
Total	\$28,956	

Note: The information on conservation spending for 2010 is incomplete due to missing data from USDA's Natural Resource Conservation Service. Payment data currently are not included for the Environmental Quality Incentives Program, but will be added once NRCS makes it available.

The information provided for the Wetland Reserve Program (WRP) provides an inaccurate picture of how WRP payments are distributed. USDA's Natural Resource Conservation Service uses title companies as intermediaries to finalize wetlands easements under the Wetlands Reserve Program. As a result, the data provided to us shows large sums of money going to these title companies. In reality, the payments are ultimately distributed to landowners participating in the WRP.

Unfortunately, NRCS has not provided the data to show where these farms and wetlands are located or which farmers or landowners are enrolling in the program, so EWG is unable to allocate these large sums of money to individuals beyond the title companies. Therefore, these companies skew the conservation rankings and payment concentration, which EWG cannot avoid unless and until NRCS makes available the additional farm attribution data. Therefore, we have not included WRP payments in the 2010 data update.

Finally, we have separated data on farm commodity, disaster and conservation payments in order to provide a more accurate picture of top recipients and concentration of payments among the three main categories of USDA programs.



Oglala Sioux Parks & Recreation received payments totaling \$28,956 from 1995 through 2010

Year	Conservation Subsidies	Disaster Subsidies	Commodity Subsidies	Total USDA Subsidies 1995-2010
1995	\$0	\$0	\$0	\$0
1996	\$0	\$0	\$0	\$0
1997	\$0	\$0	\$0	\$0
1998	\$0	\$0	\$0	\$0
1999	\$0	\$0	\$0	\$0
2000	\$0	\$0	\$0	\$0
2001	\$0	\$0	\$0	\$0
2002	\$0	\$13,878	\$0	\$13,878
2003	\$0	\$0	\$0	\$0
2004	\$0	\$15,078	\$0	\$15,078
2005	\$0	\$0	\$0	\$0
2006	\$0	\$0	\$0	\$0
2007	\$0	\$0	\$0	\$0
2008	\$0	\$0	\$0	\$0
2009	\$0	\$0	\$0	\$0
2010	\$0	\$0	\$0	\$0
Total	\$0	\$28,956	\$0	\$28,956

Crop Summary for Oglala Sioux Parks & Recreation

Crop	Payments 1995-2009
Livestock Subsidies	\$28,956

Note: The information on conservation spending for 2010 is incomplete due to missing data from USDA's Natural Resource Conservation Service. Payment data currently are not included for the Environmental Quality Incentives Program, but will be added once NRCS makes it available.

The information provided for the Wetland Reserve Program (WRP) provides an inaccurate picture of how WRP payments are distributed. USDA's Natural Resource Conservation Service uses title companies as intermediaries to finalize wetlands easements under the Wetlands Reserve Program. As a result, the data provided to us shows large sums of money going to these title companies. In reality, the payments are ultimately distributed to landowners participating in the WRP.

Unfortunately, NRCS has not provided the data to show where these farms and wetlands are located or which farmers or landowners are enrolling in the program, so EWG is unable to allocate these large sums of money to individuals beyond the title companies. Therefore, these companies skew the conservation rankings and payment concentration, which EWG cannot avoid unless and until NRCS makes available the additional farm attribution data. Therefore, we have not included WRP payments in the 2010 data update.

USDA subsidy information for **Oglala Sioux Parks & Recreation****Ownership shares for Oglala Sioux Parks & Recreation**

Pick year for ownership information

USDA county office/Ownership:	Percentage Share*
Oglala Sioux Parks & Recreation ownership information from 2002 Shannon County, South Dakota	
<u>Francis Loafer</u>	100.00%

* According to USDA percentage shares for ownership may not reflect share of subsidy payments. EWG review shows that share information on file with USDA may not always equal 100 percent. Most recent percentage share information is from 2008. Future release of this information was barred by law in the 2008 Farm Bill.

Note: The information on conservation spending for 2010 is incomplete due to missing data from USDA's Natural Resource Conservation Service. Payment data currently are not included for the Environmental Quality Incentives Program, but will be added once NRCS makes it available.

The information provided for the Wetland Reserve Program (WRP) provides an inaccurate picture of how WRP payments are distributed. USDA's Natural Resource Conservation Service uses title companies as intermediaries to finalize wetlands easements under the Wetlands Reserve Program. As a result, the data provided to us shows large sums of money going to these title companies. In reality, the payments are ultimately distributed to landowners participating in the WRP.

Unfortunately, NRCS has not provided the data to show where these farms and wetlands are located or which farmers or landowners are enrolling in the program, so EWG is unable to allocate these large sums of money to individuals beyond the title companies. Therefore, these companies skew the conservation rankings and payment concentration, which EWG cannot avoid unless and until NRCS makes available the additional farm attribution data. Therefore, we have not included WRP payments in the 2010 data update.

Finally, we have separated data on farm commodity, disaster and conservation payments in order to provide a more accurate picture of top recipients and concentration of payments among the three main categories of USDA programs.

USDA subsidy information for **Francis Loafer****Addresses on file with USDA for Francis Loafer**

USDA county office from which subsidies were paid:	Subsidy Payments 1995-2010	Most recent address on file in USDA county office
Shannon County, South Dakota	\$1,361	Francis Loafer Kyle, SD 57752
Total	\$1,361	

Note: The information on conservation spending for 2010 is incomplete due to missing data from USDA's Natural Resource Conservation Service. Payment data currently are not included for the Environmental Quality Incentives Program, but will be added once NRCS makes it available.

The information provided for the Wetland Reserve Program (WRP) provides an inaccurate picture of how WRP payments are distributed. USDA's Natural Resource Conservation Service uses title companies as intermediaries to finalize wetlands easements under the Wetlands Reserve Program. As a result, the data provided to us shows large sums of money going to these title companies. In reality, the payments are ultimately distributed to landowners participating in the WRP.

Unfortunately, NRCS has not provided the data to show where these farms and wetlands are located or which farmers or landowners are enrolling in the program, so EWG is unable to allocate these large sums of money to individuals beyond the title companies. Therefore, these companies skew the conservation rankings and payment concentration, which EWG cannot avoid unless and until NRCS makes available the additional farm attribution data. Therefore, we have not included WRP payments in the 2010 data update.

Finally, we have separated data on farm commodity, disaster and conservation payments in order to provide a more accurate picture of top recipients and concentration of payments among the three main categories of USDA programs.



Francis Loafer received payments totaling \$1,361 from 1995 through 2010

Year	Conservation Subsidies	Disaster Subsidies	Commodity Subsidies	Total USDA Subsidies 1995-2010
1995	\$0	\$0	\$0	\$0
1996	\$0	\$0	\$0	\$0
1997	\$0	\$0	\$0	\$0
1998	\$0	\$0	\$0	\$0
1999	\$0	\$0	\$0	\$0
2000	\$0	\$0	\$0	\$0
2001	\$0	\$0	\$0	\$0
2002	\$0	\$1,361	\$0	\$1,361
2003	\$0	\$0	\$0	\$0
2004	\$0	\$0	\$0	\$0
2005	\$0	\$0	\$0	\$0
2006	\$0	\$0	\$0	\$0
2007	\$0	\$0	\$0	\$0
2008	\$0	\$0	\$0	\$0
2009	\$0	\$0	\$0	\$0
2010	\$0	\$0	\$0	\$0
Total	\$0	\$1,361	\$0	\$1,361

Crop Summary for Francis Loafer

Crop	Payments 1995-2009
Livestock Subsidies	\$1,361

Note: The information on conservation spending for 2010 is incomplete due to missing data from USDA's Natural Resource Conservation Service. Payment data currently are not included for the Environmental Quality Incentives Program, but will be added once NRCS makes it available.

The information provided for the Wetland Reserve Program (WRP) provides an inaccurate picture of how WRP payments are distributed. USDA's Natural Resource Conservation Service uses title companies as intermediaries to finalize wetlands easements under the Wetlands Reserve Program. As a result, the data provided to us shows large sums of money going to these title companies. In reality, the payments are ultimately distributed to landowners participating in the WRP.

Unfortunately, NRCS has not provided the data to show where these farms and wetlands are located or which farmers or landowners are enrolling in the program, so EWG is unable to allocate these large sums of money to individuals beyond the title companies. Therefore, these companies skew the conservation rankings and payment concentration, which EWG cannot avoid unless and until NRCS makes available the additional farm attribution data. Therefore, we have not included WRP payments in the 2010 data update.

EWG Farm Subsidy Database

Corporate Subsidy Recipients 1 to 2 of 2 in South Dakota

Business Name: **OGLALA SIOUX**

Rank	Name	Location	Subsidy Total 1995-2010
1	Oglala Sioux Tribe	Pine Ridge, SD 57770	\$ 35,654.00
2	Oglala Sioux Parks & Recreation	Kyle, SD 57752	\$ 28,956.00

Note: The information on conservation spending for 2010 is incomplete due to missing data from USDA's Natural Resource Conservation Service. Payment data currently are not included for the Environmental Quality Incentives Program, but will be added once NRCS makes it available.

The information provided for the Wetland Reserve Program (WRP) provides an inaccurate picture of how WRP payments are distributed. USDA's Natural Resource Conservation Service uses title companies as intermediaries to finalize wetlands easements under the Wetlands Reserve Program. As a result, the data provided to us shows large sums of money going to these title companies. In reality, the payments are ultimately distributed to landowners participating in the WRP.

Unfortunately, NRCS has not provided the data to show where these farms and wetlands are located or which farmers or landowners are enrolling in the program, so EWG is unable to allocate these large sums of money to individuals beyond the title companies. Therefore, these companies skew the conservation rankings and payment concentration, which EWG cannot avoid unless and until NRCS makes available the additional farm attribution data. Therefore, we have not included WRP payments in the 2010 data update.

Finally, we have separated data on farm commodity, disaster and conservation payments in order to provide a more accurate picture of top recipients and concentration of payments among the three main categories of USDA programs.

USDA subsidy information for **Oglala Sioux Tribe****Addresses on file with USDA for Oglala Sioux Tribe**

USDA county office from which subsidies were paid:	Subsidy Payments 1995-2010	Most recent address on file in USDA county office
Shannon County, South Dakota	\$35,654	Oglala Sioux Tribe Pine Ridge, SD 57770
Total	\$35,654	

Note: The information on conservation spending for 2010 is incomplete due to missing data from USDA's Natural Resource Conservation Service. Payment data currently are not included for the Environmental Quality Incentives Program, but will be added once NRCS makes it available.

The information provided for the Wetland Reserve Program (WRP) provides an inaccurate picture of how WRP payments are distributed. USDA's Natural Resource Conservation Service uses title companies as intermediaries to finalize wetlands easements under the Wetlands Reserve Program. As a result, the data provided to us shows large sums of money going to these title companies. In reality, the payments are ultimately distributed to landowners participating in the WRP.

Unfortunately, NRCS has not provided the data to show where these farms and wetlands are located or which farmers or landowners are enrolling in the program, so EWG is unable to allocate these large sums of money to individuals beyond the title companies. Therefore, these companies skew the conservation rankings and payment concentration, which EWG cannot avoid unless and until NRCS makes available the additional farm attribution data. Therefore, we have not included WRP payments in the 2010 data update.

Finally, we have separated data on farm commodity, disaster and conservation payments in order to provide a more accurate picture of top recipients and concentration of payments among the three main categories of USDA programs.

Oglala Sioux Tribe received payments totaling **\$35,654** from 1995 through 2010

Year	Conservation Subsidies	Disaster Subsidies	Commodity Subsidies	Total USDA Subsidies 1995-2010
1995	\$0	\$1,598	\$0	\$1,598
1996	\$13,058	\$0	\$0	\$13,058
1997	\$0	\$0	\$0	\$0
1998	\$0	\$0	\$0	\$0
1999	\$0	\$0	\$0	\$0
2000	\$0	\$0	\$2,453	\$2,453
2001	\$0	\$0	\$2,030	\$2,030
2002	\$0	\$13,002	\$923	\$13,925
2003	\$380	\$0	\$1,161	\$1,541
2004	\$0	\$0	\$1,042	\$1,042
2005	\$0	\$0	\$7	\$7
2006	\$0	\$0	\$0	\$0
2007	\$0	\$0	\$0	\$0
2008	\$0	\$0	\$0	\$0
2009	\$0	\$0	\$0	\$0
2010	\$0	\$0	\$0	\$0
Total	\$13,438	\$14,600	\$7,616	\$35,654

Crop Summary for Oglala Sioux Tribe

Crop	Payments 1995-2009
Livestock Subsidies	\$14,600
Wheat Subsidies**	\$7,526
Barley Subsidies**	\$82
Oat Subsidies**	\$8


Note: The information on conservation spending for 2010 is incomplete due to missing data from USDA's Natural Resource Conservation Service. Payment data currently are not included for the Environmental Quality Incentives Program, but will be added once NRCS makes it available.

The information provided for the Wetland Reserve Program (WRP) provides an inaccurate picture of how WRP payments are distributed. USDA's Natural Resource Conservation Service uses title companies as intermediaries to finalize wetlands easements under the Wetlands Reserve Program. As a result, the data provided to us shows large sums of money going to these title companies. In reality, the payments are ultimately distributed to landowners participating in the WRP.

Unfortunately, NRCS has not provided the data to show where these farms and wetlands are located or which farmers or landowners are enrolling in the program, so EWG is unable to allocate these large sums of money to individuals.

USDA subsidy information for **Oglala Sioux Tribe**

Ownership shares for Oglala Sioux Tribe

Pick year for ownership information 

USDA county office/Ownership:

Percentage
Share*

Oglala Sioux Tribe
ownership information from 2008
Shannon County, South Dakota

Aloysius Waters

100.00%

* According to USDA percentage shares for ownership may not reflect share of subsidy payments. EWG review shows that share information on file with USDA may not always equal 100 percent. Most recent percentage share information is from 2008. Future release of this information was barred by law in the 2008 Farm Bill.

Note: The information on conservation spending for 2010 is incomplete due to missing data from USDA's Natural Resource Conservation Service. Payment data currently are not included for the Environmental Quality Incentives Program, but will be added once NRCS makes it available.

The information provided for the Wetland Reserve Program (WRP) provides an inaccurate picture of how WRP payments are distributed. USDA's Natural Resource Conservation Service uses title companies as intermediaries to finalize wetlands easements under the Wetlands Reserve Program. As a result, the data provided to us shows large sums of money going to these title companies. In reality, the payments are ultimately distributed to landowners participating in the WRP.

Unfortunately, NRCS has not provided the data to show where these farms and wetlands are located or which farmers or landowners are enrolling in the program, so EWG is unable to allocate these large sums of money to individuals beyond the title companies. Therefore, these companies skew the conservation rankings and payment concentration, which EWG cannot avoid unless and until NRCS makes available the additional farm attribution data. Therefore, we have not included WRP payments in the 2010 data update.

Finally, we have separated data on farm commodity, disaster and conservation payments in order to provide a more accurate picture of top recipients and concentration of payments among the three main categories of USDA programs.

USDA subsidy information for **Aloysius Waters**

Addresses on file with USDA for Aloysius Waters

USDA county office from which subsidies were paid:	Subsidy Payments 1995-2010	Most recent address on file in USDA county office
Shannon County, South Dakota	\$0	Aloysius Waters Pine Ridge, SD 57770
Total	\$0	

Note: The information on conservation spending for 2010 is incomplete due to missing data from USDA's Natural Resource Conservation Service. Payment data currently are not included for the Environmental Quality Incentives Program, but will be added once NRCS makes it available.

The information provided for the Wetland Reserve Program (WRP) provides an inaccurate picture of how WRP payments are distributed. USDA's Natural Resource Conservation Service uses title companies as intermediaries to finalize wetlands easements under the Wetlands Reserve Program. As a result, the data provided to us shows large sums of money going to these title companies. In reality, the payments are ultimately distributed to landowners participating in the WRP.

Unfortunately, NRCS has not provided the data to show where these farms and wetlands are located or which farmers or landowners are enrolling in the program, so EWG is unable to allocate these large sums of money to individuals beyond the title companies. Therefore, these companies skew the conservation rankings and payment concentration, which EWG cannot avoid unless and until NRCS makes available the additional farm attribution data. Therefore, we have not included WRP payments in the 2010 data update.

Finally, we have separated data on farm commodity, disaster and conservation payments in order to provide a more accurate picture of top recipients and concentration of payments among the three main categories of USDA programs.

2000062000000000000101000000	00000	12
X20		
416323919OAKLEAF CHARITABLE REMAINDER TR		
201 S PHILLIPS AVE STE 216	SIOUX FALLS	SD57104-635700009001
00000000092800000051200000020091209000	120000000056182400000000000000	
BOULDER BRIDGE TRUST CO TRUSTEE		
460352497OAKWOOD LAKES AREA DEVELOPMENT ASSOCIATION INC		
% C/O JANIE WITTMEIER SECRETARY	42 OAKWOOD SHORELINE DRIVE	BRUCE
SD57220-000000000331	19790811635135337910100000020091200000	
1200000000000000000000000000000000000000		
510167624OAKWOOD PARK CHRISTIAN CHURCH		
811 S GORDON DR	SIOUX FALLS	SD57110-274800000337
197511110001006007101000000	00000	12
226869578OBERKFELL FAM 2000 CHARITALBE TR AGREEMENT		
1300 W 57TH ST STE G100	SIOUX FALLS	SD57108-288500009001
00000000092800000001200000020091209000	12000000039909000000000000000000	
OBERKFELL KEITH F ET AL TTEE		
363900385OCETI WAKAN-SACRED FIREPLACE		
% PETER V CATCHES	PO BOX 1958	
PINERIDGE	SD57770-195800000331	
19940711216657300010100000020101243000	12000000022474000000000080692	
00000000077467		
906084413ODDE FAM GRANTOR TR		
12101 386TH AVE	WESTPORT	SD57481-691500009001
00000000092800000001200000020091209000	120000000162268000000000000000	
GREG ODDE		
460404024OELRICHS CEMETERY ASSOCIATION		
% DEBRA FRAHM	14025 ANTELOPE LANE RD	
OELRICHS	SD57763-780500001331	
199209100900000000010100000020091200000	12000000000000000000000000000000	
00000000000000		
510136760OFFICERS SPOUSES CLUB OF ELLSWORTH AIR FORCE BASE		
PO BOX 993	BOX ELDER	SD57719-099300000731
19780220028500000050100000020100532000	0500000000278660000000017874	
00000000014258		
237135915OGLALA LAKOTA COLLEGE		
PO BOX 490	KYLE	SD57752-049000000332
19711011103092300010100000020100998000	0900000603535520000039136012	
0000038504092 B43Z		
911810732OGLALA LAKOTA COURT APPOINTED SPECIAL ADVOCATE PROGRAM		
% ARLANA BETTELYOUN	PO BOX 5014	PINE
RIDGE	SD57770-501400000331	
199906115000000000010100000020090924000	09000000001698900000000345705	
00000000345705 P50 CASA		
460451277OGLALA SIOUX TRIBE PARTNERSHIP FOR HOUSING INC		
PO BOX 3001	PINE RIDGE	SD57770-300100000331
200002115000000000010100000020091254000	1200000008125910000000249628	
0000000249628 L21		
460396398OLATHE GOOD SAMARITAN HOUSING INC		
PO BOX 5038	SIOUX FALLS	SD57117-503800000331
198711117153000000010100000020091264000	1200000047649080000000205924	
0000000205924 L20		
460394864OLD ELM SPRINGS HUTTERIAN BRETHREN INC		
% JEFFREY T SVEEN	42021 268TH ST	
PARKSTON	SD57366-520600004031	198707200029000000401000000
00000	12	

[Sign In](#) | [Cart](#) | [Newsletters](#) | [Search](#)

1-800-MELISSA

[Products](#)[Solutions](#)[Downloads & Trials](#)[Support](#)[Resources](#)[Lookups](#)[Contact Us](#)**# Free Lookups**[Home](#) > [Lookups](#) > **Nonprofit Organization Lookup**[Help](#)

13+ data quality tools for developers

1-800-MELISSA

[click here to download your free trials >>](#)Enter a 5-digit ZIP Code,
organization name or 9-digit Tax ID
Use this Lookup to:

- Find information on over 1.4 million registered nonprofit organizations in the United States
- Get organization name, assets, income, and IRS subsection
- Select organization for contact name and address, type of foundation and organization
- Get deductibility status, classification, Form 990, and more

UGLALA SIOUX TRIBE PARTNERSHIP FOR HOUSING INC

	PO BOX 3001
Address	PINE RIDGE, SD 57770-3001
	MapG MapY MapV
IRS Subsection	501(c)(3) - A religious, educational, charitable, scientific or literary organization.
Type of Foundation	Organization which receives a substantial part of its support from a governmental unit or the general public
Type of Organization	Corporation
Deductibility	Contributions are deductible
Tax I.D. Number	460451277
Exempt Since	02-2000
Form 990 Requirement	990 or 990EZ return
Last 990 Form Filed	12-2009
Form 990 Amount	\$249,628
Classification	Public Housing Facilities

Share with others information about this Nonprofit - like the web site, e-mail address, how to donate or any corrections to the data shown.

Messages

[How Can We Improve this Lookup?](#) | [Send to a Friend](#) | [Lookups Forum](#) | [Terms of Use](#)



Oglala Sioux Tribe Partnership For Housing Inc

Old Ambulance Building
Pine Ridge, SD 57770 [map](#)

Website: Information not found

Phone: (605) 867-1555

[Own this business?](#)

[Edit Company Info](#)

About Oglala Sioux Tribe Partnership For Housing Inc

[Is this your company? Claim This Profile](#)

Oglala Sioux Tribe Partnership For Housing Inc in Pine Ridge, SD is a private company categorized under Social Service and Welfare Organizations. Our records show it was established in 1999 and incorporated in South Dakota. Register for free to see additional information such as annual revenue and employment figures. Companies like Oglala Sioux Tribe Partnership For Housing Inc usually offer: Lds Social Services, Child Social Services, Family Social Services, Dog Shelters and Orange County Social Services.

Oglala Sioux Tribe Partnership For Housing Inc Business Information

Location Type	Single Location
Annual Sales (Estimated)	View Details
Employees (Estimated)	6
SIC Code	View Details
NAICS Code	624190, Other Individual and Family Services
Products, Services and Brands	Information not found
State of Incorporation	South Dakota
Years in Business	11

Business Categories

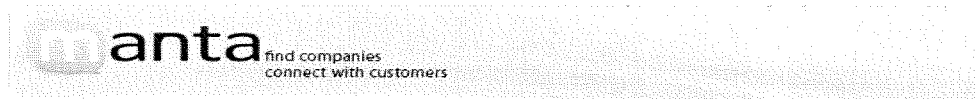
Individual and family services in Pine Ridge, SD
Individual/Family Services
Other Individual and Family Services
[View newly formed U.S. businesses](#)

Company Contacts

[Is this your company? Claim This Profile](#)

	Emma Clifford Executive Director
--	-------------------------------------

[Search for more contacts](#)



Oglala Sioux Tribe Of Pine Ridge Indian Reservation,

Ogallala Sioux Tribe Dept Pbic
4 Way Stop
Pine Ridge, SD 57770 [map](#)

Website: Information not found

Phone: (605) 867-5141

[Own this business?](#)

[Edit Company Info](#)

About Oglala Sioux Tribe Of Pine Ridge Indian Reservation

Is this your company? [Claim This Profile](#)

Oglala Sioux Tribe Of Pine Ridge Indian Reservation in Pine Ridge, SD is a private company categorized under Administration of Social and Manpower Programs, Federal Governmen. Register for free to see additional information such as annual revenue and employment figures.

Oglala Sioux Tribe Of Pine Ridge Indian Reservation Business Information

Oglala Sioux Tribe Of Pine Ridge Indian Reservation also does business as Ogallala Sioux Tribe Dept Pbic .

Location Type	Branch
Annual Sales (Estimated)	Information not found
Employees (Estimated)	<i>At this location</i> 25
SIC Code	View Details
NAICS Code	923130, Administration of Human Resource Programs (except Education, Public Health, and Veterans' Affairs Programs)
Products, Services and Brands	Information not found
State of Incorporation	Information not found
Years in Business	Information not found

Business Categories

Administration of social and manpower programs,
Federal governmen in Pine Ridge, SD

Administrative Social/Manpower Programs

Administration of Human Resource Programs (except Education, Public Health, and Veterans' Affairs Programs)

[View newly formed U.S. businesses](#)

Company Contacts

Is this your company? [Claim This Profile](#)

Lynnell Eaglebull
Manager

[Search for more contacts](#)

**Oglala Sioux Tribe Offices**

PO Box 2070
Pine Ridge, SD 57770-2070 [map](#)

Website: Information not found

Phone: (605) 867-1265

[Own this business?](#)

[Edit Company Info](#)

About Oglala Sioux Tribe Offices

Is this your company? [Claim This Profile](#)

Oglala Sioux Tribe Offices in Pine Ridge, SD is a private company categorized under Indian Affairs Government Offices. Register for free to see additional information such as annual revenue and employment figures.

Oglala Sioux Tribe Offices Business Information

Location Type Branch

Annual Sales (Estimated) [View Details](#)

Employees (Estimated) 5 to 9

SIC Code [View Details](#)

NAICS Code 921190, Other General Government Support

Products, Services and Brands Information not found

Business Categories

Government Offices-Native American in Pine Ridge, SD

Other General Government Support

[View newly formed U.S. businesses](#)

Company Contacts

Is this your company? [Claim This Profile](#)



[Invite a Contact to Join Manta](#)

- [Search for contacts](#)



EWG Farm Subsidy Database

Corporate Subsidy Recipients 1 to 2 of 2 in South Dakota

Business Name: **YANKTON SIOUX**

Rank	Name	Location	Subsidy Total 1995-2010
1	Yankton Sioux Tribe	Marty, SD 57361	\$ 32,317.46
2	Yankton Sioux Housing Authority	Wagner, SD 57380	\$ 2,523.00

Note: The information on conservation spending for 2010 is incomplete due to missing data from USDA's Natural Resource Conservation Service. Payment data currently are not included for the Environmental Quality Incentives Program, but will be added once NRCS makes it available.

The information provided for the Wetland Reserve Program (WRP) provides an inaccurate picture of how WRP payments are distributed. USDA's Natural Resource Conservation Service uses title companies as intermediaries to finalize wetlands easements under the Wetlands Reserve Program. As a result, the data provided to us shows large sums of money going to these title companies. In reality, the payments are ultimately distributed to landowners participating in the WRP.

Unfortunately, NRCS has not provided the data to show where these farms and wetlands are located or which farmers or landowners are enrolling in the program, so EWG is unable to allocate these large sums of money to individuals beyond the title companies. Therefore, these companies skew the conservation rankings and payment concentration, which EWG cannot avoid unless and until NRCS makes available the additional farm attribution data. Therefore, we have not included WRP payments in the 2010 data update.

Finally, we have separated data on farm commodity, disaster and conservation payments in order to provide a more accurate picture of top recipients and concentration of payments among the three main categories of USDA programs.



USDA subsidy information for **Yankton Sioux Housing Authority**

Addresses on file with USDA for Yankton Sioux Housing Authority

USDA county office from which subsidies were paid:	Subsidy Payments 1995-2010	Most recent address on file in USDA county office
Charles Mix County, South Dakota	\$2,523	Yankton Sioux Housing Authority Wagner, SD 57380
Total	\$2,523	

Note: The information on conservation spending for 2010 is incomplete due to missing data from USDA's Natural Resource Conservation Service. Payment data currently are not included for the Environmental Quality Incentives Program, but will be added once NRCS makes it available.

The information provided for the Wetland Reserve Program (WRP) provides an inaccurate picture of how WRP payments are distributed. USDA's Natural Resource Conservation Service uses title companies as intermediaries to finalize wetlands easements under the Wetlands Reserve Program. As a result, the data provided to us shows large sums of money going to these title companies. In reality, the payments are ultimately distributed to landowners participating in the WRP.

Unfortunately, NRCS has not provided the data to show where these farms and wetlands are located or which farmers or landowners are enrolling in the program, so EWG is unable to allocate these large sums of money to individuals beyond the title companies. Therefore, these companies skew the conservation rankings and payment concentration, which EWG cannot avoid unless and until NRCS makes available the additional farm attribution data. Therefore, we have not included WRP payments in the 2010 data update.

Finally, we have separated data on farm commodity, disaster and conservation payments in order to provide a more accurate picture of top recipients and concentration of payments among the three main categories of USDA programs.



Yankton Sioux Housing Authority received payments totaling \$2,523 from 1995 through 2010

Year	Conservation Subsidies	Disaster Subsidies	Commodity Subsidies	Total USDA Subsidies 1995-2010
1995	\$0	\$0	\$0	\$0
1996	\$0	\$0	\$0	\$0
1997	\$0	\$0	\$353	\$353
1998	\$0	\$0	\$434	\$434
1999	\$0	\$0	\$556	\$556
2000	\$0	\$0	\$535	\$535
2001	\$0	\$0	\$444	\$444
2002	\$0	\$0	\$201	\$201
2003	\$0	\$0	\$0	\$0
2004	\$0	\$0	\$0	\$0
2005	\$0	\$0	\$0	\$0
2006	\$0	\$0	\$0	\$0
2007	\$0	\$0	\$0	\$0
2008	\$0	\$0	\$0	\$0
2009	\$0	\$0	\$0	\$0
2010	\$0	\$0	\$0	\$0
Total	\$0	\$0	\$2,523	\$2,523

Crop Summary for Yankton Sioux Housing Authority

Crop	Payments 1995-2009
Sorghum Subsidies**	\$1,974
Corn Subsidies**	\$549

Note: The information on conservation spending for 2010 is incomplete due to missing data from USDA's Natural Resource Conservation Service. Payment data currently are not included for the Environmental Quality Incentives Program, but will be added once NRCS makes it available.

The information provided for the Wetland Reserve Program (WRP) provides an inaccurate picture of how WRP payments are distributed. USDA's Natural Resource Conservation Service uses title companies as intermediaries to finalize wetlands easements under the Wetlands Reserve Program. As a result, the data provided to us shows large sums of money going to these title companies. In reality, the payments are ultimately distributed to landowners participating in the WRP.

Unfortunately, NRCS has not provided the data to show where these farms and wetlands are located or which farmers or landowners are enrolling in the program, so EWG is unable to allocate these large sums of money to individuals beyond the title companies. Therefore, these companies skew the conservation rankings and payment concentration,



Yankton Sioux Tribal Housing,

Yankton Sioux Housing Authority
406 S Main Avenue
Wagner, SD 57380-9663 [map](#)

Website: Information not found

Phone: (605) 384-3171

[Own this business?](#)

[Edit Company Info](#)

About Yankton Sioux Tribal Housing

Is this your company? [Claim This Profile](#)

Yankton Sioux Tribal Housing in Wagner, SD is a private company categorized under City Government-Housing Programs. Register for free to see additional information such as annual revenue and employment figures.

Yankton Sioux Tribal Housing Business Information

Yankton Sioux Tribal Housing also does business as Yankton Sioux Housing Authority .

Location Type	Branch
Annual Sales (Estimated)	View Details
Employees (Estimated)	10 to 19 40 ** <i>At this location</i> 40
SIC Code	View Details
NAICS Code	921190, Other General Government Support
Products, Services and Brands	Information not found
State of Incorporation	Information not found
Years in Business	41

Business Categories

Government Offices-Native American in Wagner, SD
Housing Program
Other General Government Support
[View newly formed U.S. businesses](#)

Company Contacts

Is this your company? [Claim This Profile](#)

	Joseph Abdo Manager
	Goenford Fully* Director*

[Search for more contacts](#)

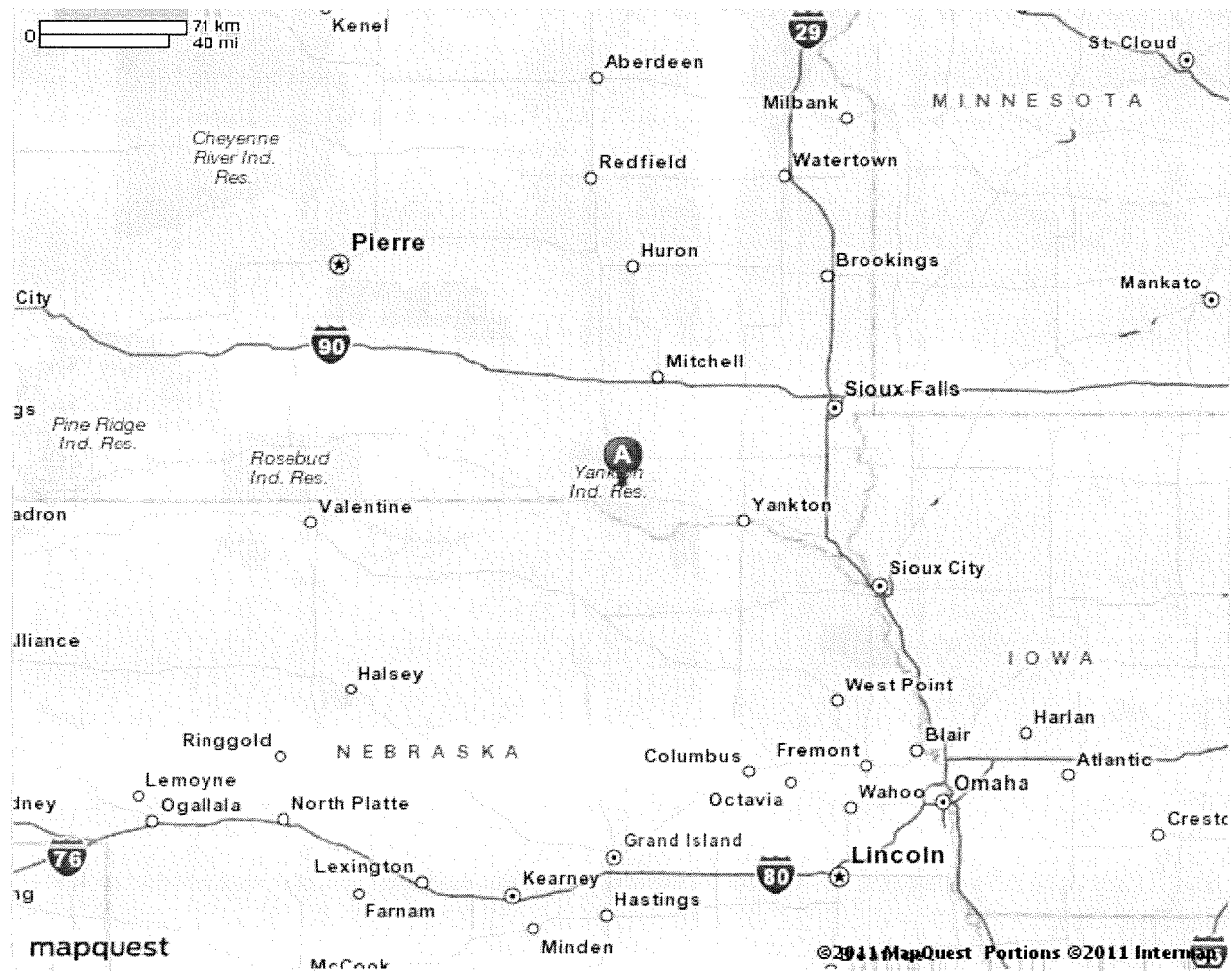


MAPQUEST

Notes

Map of Yankton Sioux Tribal Housing

406 S Main Ave, Wagner, SD 57380 - (605) 384-3171



All rights reserved. Use subject to License/Copyright | [Map Legend](#)

Directions and maps are informational only. We make no warranties on the accuracy of their content, road conditions or route usability or expeditiousness. You assume all risk of use. MapQuest and its suppliers shall not be liable to you for any loss or delay resulting from your use of MapQuest. Your use of MapQuest means you agree to our [Terms of Use](#)

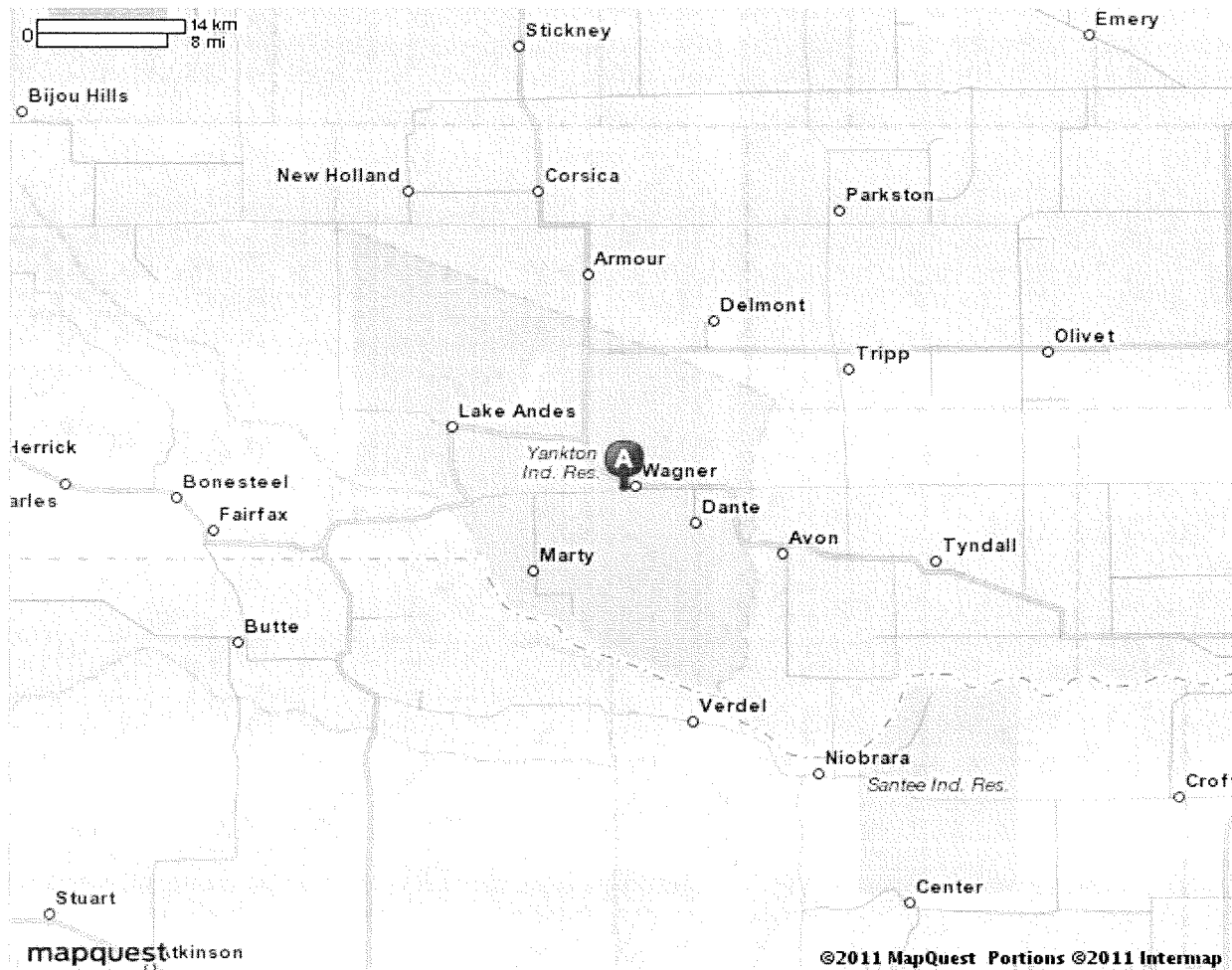


MAPQUEST

Map of Yankton Sioux Tribal Housing

406 S Main Ave, Wagner, SD 57380 - (605) 384-3171

Notes



All rights reserved. Use subject to [License/Copyright](#) | [Map Legend](#)

Directions and maps are informational only. We make no warranties on the accuracy of their content, road conditions or route usability or expeditiousness. You assume all risk of use. MapQuest and its suppliers shall not be liable to you for any loss or delay resulting from your use of MapQuest. Your use of MapQuest means you agree to our [Terms of Use](#)

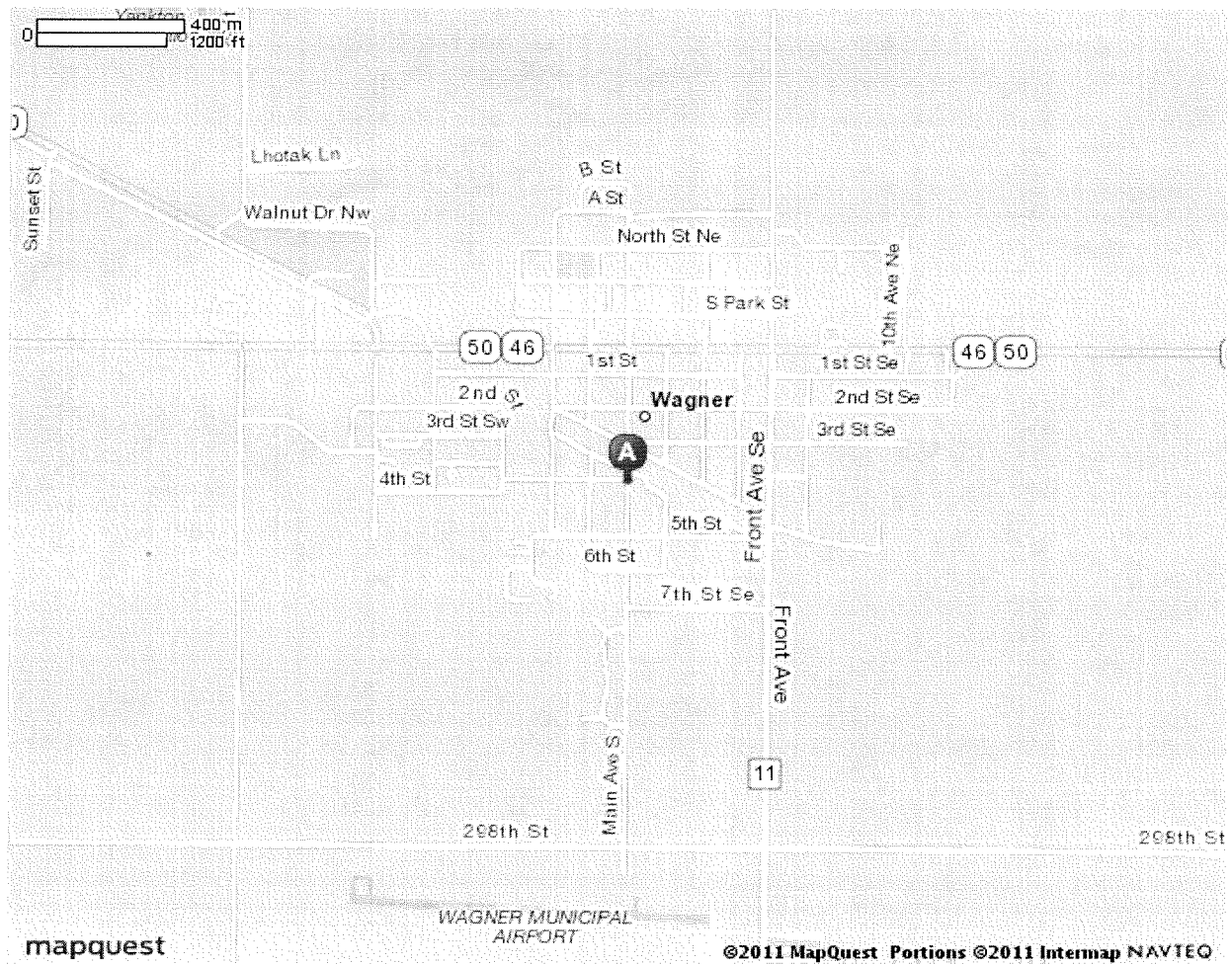


MAPQUEST

Map of Yankton Sioux Tribal Housing

406 S Main Ave, Wagner, SD 57380 - (605) 384-3171

Notes



All rights reserved. Use subject to [License/Copyright](#) | [Map Legend](#)

Directions and maps are informational only. We make no warranties on the accuracy of their content, road conditions or route usability or expeditiousness. You assume all risk of use. MapQuest and its suppliers shall not be liable to you for any loss or delay resulting from your use of MapQuest. Your use of MapQuest means you agree to our [Terms of Use](#)



MAPQUEST

Map of Yankton Sioux Tribal Housing

406 S Main Ave, Wagner, SD 57380 - (605) 384-3171

Notes



All rights reserved. Use subject to [License/Copyright](#) | [Map Legend](#)

Directions and maps are informational only. We make no warranties on the accuracy of their content, road conditions or route usability or expeditiousness. You assume all risk of use. MapQuest and its suppliers shall not be liable to you for any loss or delay resulting from your use of MapQuest. Your use of MapQuest means you agree to our [Terms of Use](#)



MAPQUEST

Notes

Trip to Yankton Sioux Tribal Housing

406 S Main Ave, Wagner, SD 57380 - (605) 384-3171

384-3171

112.94 miles - about 2 hours 9 minutes



Sioux Falls, SD



1. Start out going **SOUTH** on **S PHILLIPS AVE** toward **W 11TH ST / SD-42 E.**

go 0.0 mi



2. Turn **LEFT** onto **E 11TH ST / SD-42 E.** Continue to follow **SD-42 E.**

go 1.6 mi



3. Merge onto **I-229 S.**

go 6.7 mi



4. Merge onto **I-29 S** via **EXIT 1A** on the **LEFT.**

go 28.4 mi



5. Take the **SD-46** exit, **EXIT 47**, toward **BERESFORD / IRENE.**

go 0.3 mi



6. Turn **RIGHT** onto **SD-46.**

go 75.7 mi



7. Turn **LEFT** onto **MAIN AVE S.**

go 0.3 mi



8. **406 S MAIN AVE.**

go 0.0 mi

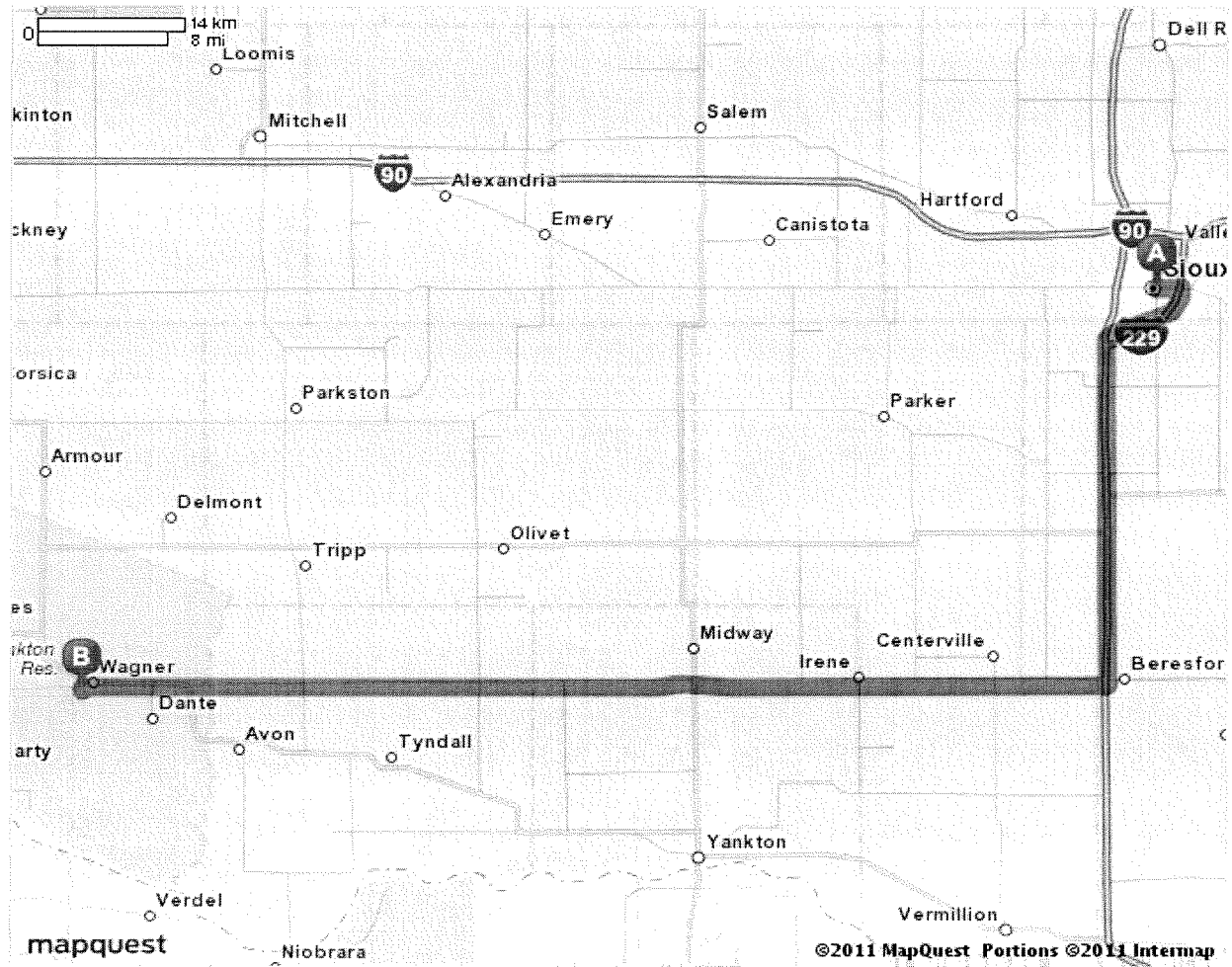


Yankton Sioux Tribal Housing - (605) 384-3171

406 S Main Ave, Wagner, SD 57380

Total Travel Estimate : 112.94 miles - about 2 hours 9 minutes

Route Map [Hide](#)



All rights reserved. Use subject to License/Copyright | [Map Legend](#)

Directions and maps are informational only. We make no warranties on the accuracy of their content, road conditions or route usability or expeditiousness. You assume all risk of use. MapQuest and its suppliers shall not be liable to you for any loss or delay resulting from your use of MapQuest. Your use of MapQuest means you agree to our [Terms of Use](#)

**EWG Farm Subsidy Database****Corporate Subsidy Recipients 1 to 2 of 2 in South Dakota****Business Name: YANKTON SIOUX**

Rank	Name	Location	Subsidy Total 1995-2010
1	Yankton Sioux Tribe	Marty, SD 57361	\$ 32,317.46
2	Yankton Sioux Housing Authority	Wagner, SD 57380	\$ 2,523.00

Note: The information on conservation spending for 2010 is incomplete due to missing data from USDA's Natural Resource Conservation Service. Payment data currently are not included for the Environmental Quality Incentives Program, but will be added once NRCS makes it available.

The information provided for the Wetland Reserve Program (WRP) provides an inaccurate picture of how WRP payments are distributed. USDA's Natural Resource Conservation Service uses title companies as intermediaries to finalize wetlands easements under the Wetlands Reserve Program. As a result, the data provided to us shows large sums of money going to these title companies. In reality, the payments are ultimately distributed to landowners participating in the WRP.

Unfortunately, NRCS has not provided the data to show where these farms and wetlands are located or which farmers or landowners are enrolling in the program, so EWG is unable to allocate these large sums of money to individuals beyond the title companies. Therefore, these companies skew the conservation rankings and payment concentration, which EWG cannot avoid unless and until NRCS makes available the additional farm attribution data. Therefore, we have not included WRP payments in the 2010 data update.

Finally, we have separated data on farm commodity, disaster and conservation payments in order to provide a more accurate picture of top recipients and concentration of payments among the three main categories of USDA programs.

USDA subsidy information for **Yankton Sioux Tribe****Addresses on file with USDA for Yankton Sioux Tribe**

USDA county office from which subsidies were paid:	Subsidy Payments 1995-2010	Most recent address on file in USDA county office
Charles Mix County, South Dakota	\$32,317	Yankton Sioux Tribe Marty, SD 57361
Total	\$32,317	

Note: The information on conservation spending for 2010 is incomplete due to missing data from USDA's Natural Resource Conservation Service. Payment data currently are not included for the Environmental Quality Incentives Program, but will be added once NRCS makes it available.

The information provided for the Wetland Reserve Program (WRP) provides an inaccurate picture of how WRP payments are distributed. USDA's Natural Resource Conservation Service uses title companies as intermediaries to finalize wetlands easements under the Wetlands Reserve Program. As a result, the data provided to us shows large sums of money going to these title companies. In reality, the payments are ultimately distributed to landowners participating in the WRP.

Unfortunately, NRCS has not provided the data to show where these farms and wetlands are located or which farmers or landowners are enrolling in the program, so EWG is unable to allocate these large sums of money to individuals beyond the title companies. Therefore, these companies skew the conservation rankings and payment concentration, which EWG cannot avoid unless and until NRCS makes available the additional farm attribution data. Therefore, we have not included WRP payments in the 2010 data update.

Finally, we have separated data on farm commodity, disaster and conservation payments in order to provide a more accurate picture of top recipients and concentration of payments among the three main categories of USDA programs.

Yankton Sioux Tribe received payments totaling \$32,317 from 1995 through 2010

Year	Conservation Subsidies	Disaster Subsidies	Commodity Subsidies	Total USDA Subsidies 1995-2010
1995	\$0	\$0	\$0	\$0
1996	\$0	\$0	\$2,594	\$2,594
1997	\$0	\$0	\$249	\$249
1998	\$0	\$0	\$711	\$711
1999	\$0	\$0	\$912	\$912
2000	\$0	\$0	\$876	\$876
2001	\$0	\$0	\$726	\$726
2002	\$0	\$1,247	\$330	\$1,577
2003	\$0	\$0	\$404	\$404
2004	\$0	\$0	\$367	\$367
2005	\$0	\$0	\$641	\$641
2006	\$4,318	\$0	\$653	\$4,971
2007	\$4,318	\$0	\$843	\$5,161
2008	\$4,318	\$762	\$874	\$5,954
2009	\$4,318	\$0	\$846	\$5,164
2010	\$389	\$0	\$1,621	\$2,010
Total	\$17,661	\$2,009	\$12,647	\$32,317

Crop Summary for Yankton Sioux Tribe

Crop	Payments 1995-2009
Sorghum Subsidies**	\$7,159
Livestock Subsidies	\$2,009
Corn Subsidies**	\$1,541
Wheat Subsidies**	\$1,225
Oat Subsidies**	\$234
Barley Subsidies**	\$21


Note: The information on conservation spending for 2010 is incomplete due to missing data from USDA's Natural Resource Conservation Service. Payment data currently are not included for the Environmental Quality Incentives Program, but will be added once NRCS makes it available.

The information provided for the Wetland Reserve Program (WRP) provides an inaccurate picture of how WRP payments are distributed. USDA's Natural Resource Conservation Service uses title companies as intermediaries to finalize wetlands easements under the Wetlands Reserve Program. As a result, the data provided to us shows large



USDA subsidy information for **Yankton Sioux Tribe**

Ownership shares for Yankton Sioux Tribe

Pick year for ownership information 

USDA county office/Ownership:	Percentage Share*
Yankton Sioux Tribe ownership information from 2008 Charles Mix County, South Dakota	
<u>Members Of Yankton Sioux Tribe</u>	100.00%

* According to USDA percentage shares for ownership may not reflect share of subsidy payments. EWG review shows that share information on file with USDA may not always equal 100 percent. Most recent percentage share information is from 2008. Future release of this information was barred by law in the 2008 Farm Bill.

Note: The information on conservation spending for 2010 is incomplete due to missing data from USDA's Natural Resource Conservation Service. Payment data currently are not included for the Environmental Quality Incentives Program, but will be added once NRCS makes it available.

The information provided for the Wetland Reserve Program (WRP) provides an inaccurate picture of how WRP payments are distributed. USDA's Natural Resource Conservation Service uses title companies as intermediaries to finalize wetlands easements under the Wetlands Reserve Program. As a result, the data provided to us shows large sums of money going to these title companies. In reality, the payments are ultimately distributed to landowners participating in the WRP.

Unfortunately, NRCS has not provided the data to show where these farms and wetlands are located or which farmers or landowners are enrolling in the program, so EWG is unable to allocate these large sums of money to individuals beyond the title companies. Therefore, these companies skew the conservation rankings and payment concentration, which EWG cannot avoid unless and until NRCS makes available the additional farm attribution data. Therefore, we have not included WRP payments in the 2010 data update.

Finally, we have separated data on farm commodity, disaster and conservation payments in order to provide a more accurate picture of top recipients and concentration of payments among the three main categories of USDA programs.

environmental working group's Farm Subsidy Database



180,794,204

NEW 2007 Direct Payment Subsidy Overview NEW Press Release

[2008 Farm Subsidy Database Update](#)

[2008 Summary](#)

[2008 News Release](#)

[EWG's Policy Analysis Database](#)



- [Full Disclosure: Who really benefits from federal farm subsidies](#)
- [What's in the new Farm Bill 2007 Database?](#)
- [New Farm Bill Web Site Generates Media Storm](#)

[Congressional District Ranking](#)

Related Content

[Farms Receiving Government](#)

[Payments](#)

[Speech: Farm Policy For The Rest of Us](#)

USDA subsidy information for Setting Sun Hutterian Brethren In

Setting Sun Hutterian Brethren In: [Summary](#) | [Programs](#) | [Programs by year](#) | [Farm Location\(s\)](#) | [Ownership Interest\(s\)](#)

Ownership shares for Setting Sun Hutterian Brethren In

Pick year for ownership information

USDA county office/Ownership:	Percentage Share*
Setting Sun Hutterian Brethren In ownership information from 2005 Charles Mix County, South Dakota	
Members Of Setting Sun Delmont, SD 57330	100.00 %
Members Of Yankton Sioux Tribe Marty, SD 57361	100.00 %

* According to USDA percentage shares for ownership may not reflect share of subsidy payments. EWG review shows that share information on file with USDA may not always equal 100 percent.

environmental working group's Farm Subsidy Database



180,797,503

NEW 2007 Direct Payment Subsidy Overview

NEW Press Release

[2008 Farm Subsidy Database Update](#)

[2008 Summary](#)

[2008 News Release](#)

[EWG's Policy Analysis Database](#)



- [Full Disclosure: Who really benefits from federal farm subsidies](#)
- [What's in the new Farm Bill 2007 Database?](#)
- [New Farm Bill Web Site Generates Media Storm](#)

[Congressional District Ranking](#)

Related Content

Farms Receiving Government

Payments

Speech: Farm Policy For The Rest of
Us

USDA subsidy information for Members Of Yankton Sioux Tribe

Members Of Yankton Sioux Tribe: [Farm Location\(s\)](#) | [Recipient ownership share\(s\)](#)

Recipient's ownership share(s)

Recipient:	County	Percentage Share*
Yankton Sioux Tribe	Charles Mix County, South Dakota	100.0 %

* Percentage share information is from 2006. According to USDA percentage shares for ownership may not reflect share of subsidy payments. EWG review shows that share information on file with USDA may not equal 100 percent.

**Yankton Sioux Tribe**

100 Main Street
Marty, SD 57361 [map](#)

[Own this business?](#)[Edit Company Info](#)

Website: Information not found

Phone: (605) 384-3641

About Yankton Sioux Tribe

[Is this your company? Claim This Profile](#)

Yankton Sioux Tribe in Marty, SD is a private company categorized under City Government-Executive Offices. Register for free to see additional information such as annual revenue and employment figures.

Yankton Sioux Tribe Business Information

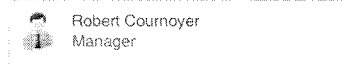
Location Type	Branch
Annual Sales (Estimated)	View Details
Employees (Estimated)	1 to 4
SIC Code	View Details
NAICS Code	921110, Executive Offices
Products, Services and Brands	Information not found

Business Categories

City Government-Executive Offices in Marty, SD
Executive Offices
[View newly formed U.S. businesses](#)

Company Contacts

[Is this your company? Claim This Profile](#)



[Search for more contacts](#)

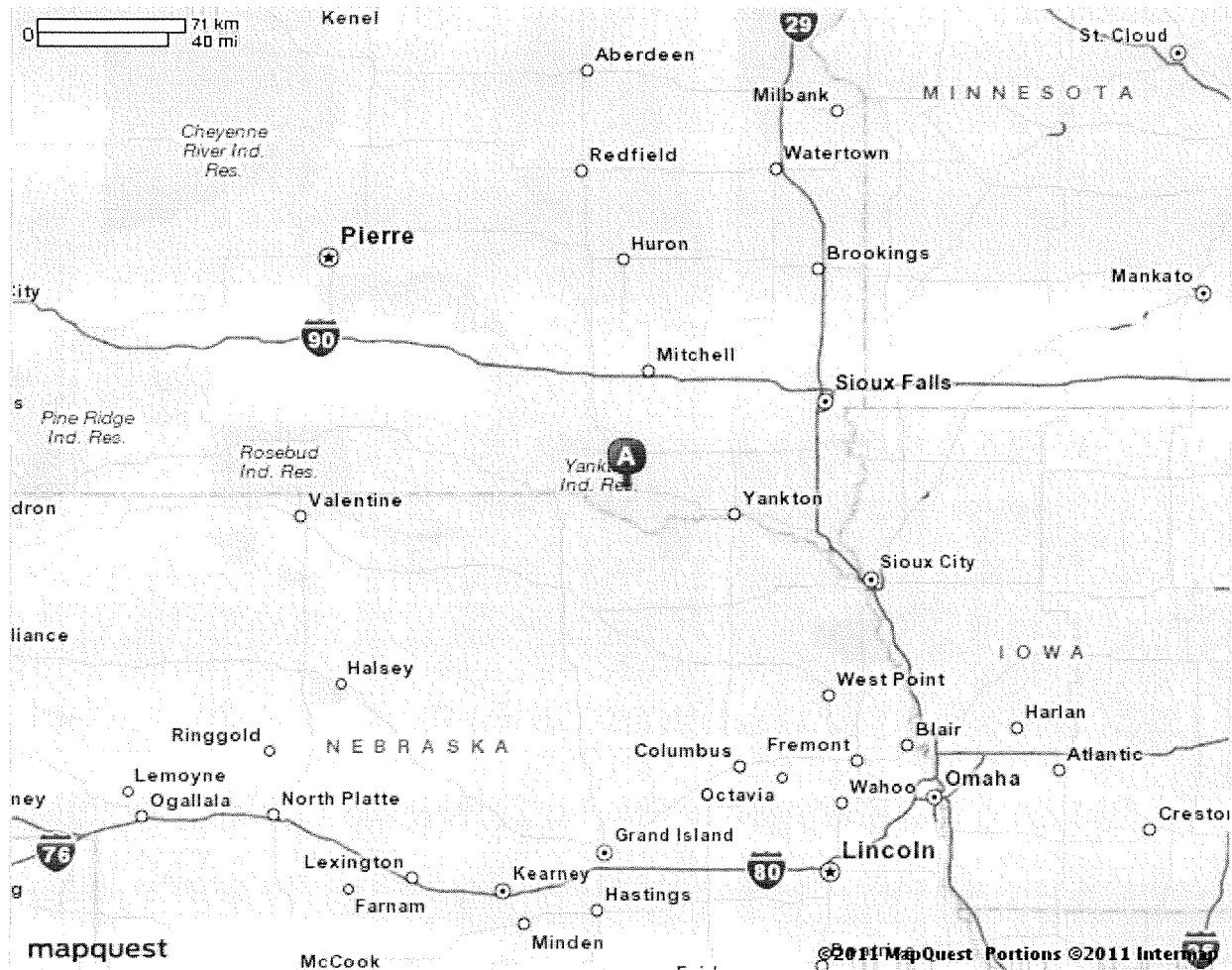


MAPQUEST

Map of Yankton Sioux Tribe

100 Main St, Marty, SD 57361 - (605) 384-3641

Notes



All rights reserved. Use subject to License/Copyright | [Map Legend](#)

Directions and maps are informational only. We make no warranties on the accuracy of their content, road conditions or route usability or expeditiousness. You assume all risk of use. MapQuest and its suppliers shall not be liable to you for any loss or delay resulting from your use of MapQuest. Your use of MapQuest means you agree to our [Terms of Use](#)

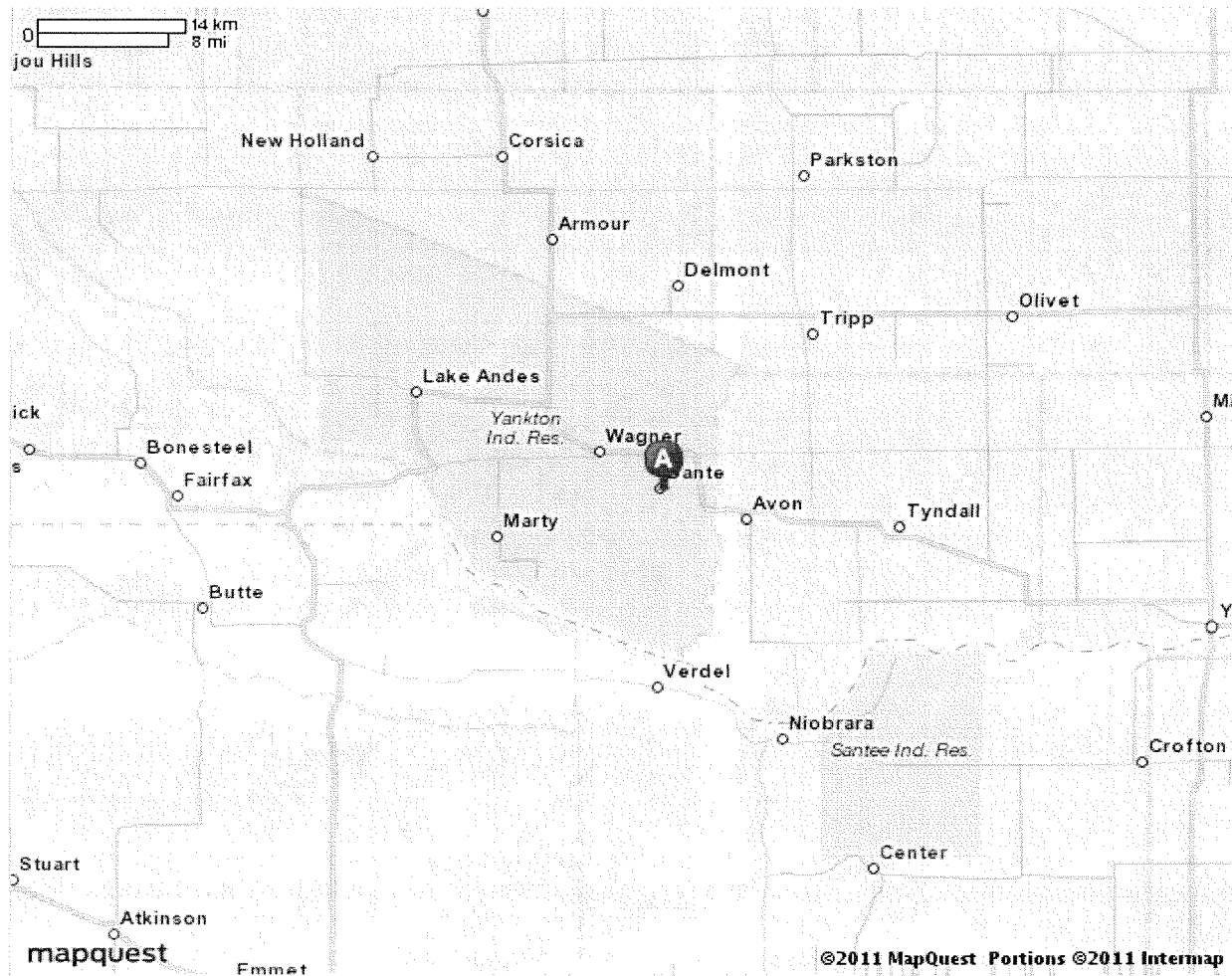


MAPQUEST

Map of Yankton Sioux Tribe

100 Main St, Marty, SD 57361 - (605) 384-3641

Notes



All rights reserved. Use subject to License/Copyright | [Map Legend](#)

Directions and maps are informational only. We make no warranties on the accuracy of their content, road conditions or route usability or expeditiousness. You assume all risk of use. MapQuest and its suppliers shall not be liable to you for any loss or delay resulting from your use of MapQuest. Your use of MapQuest means you agree to our [Terms of Use](#)

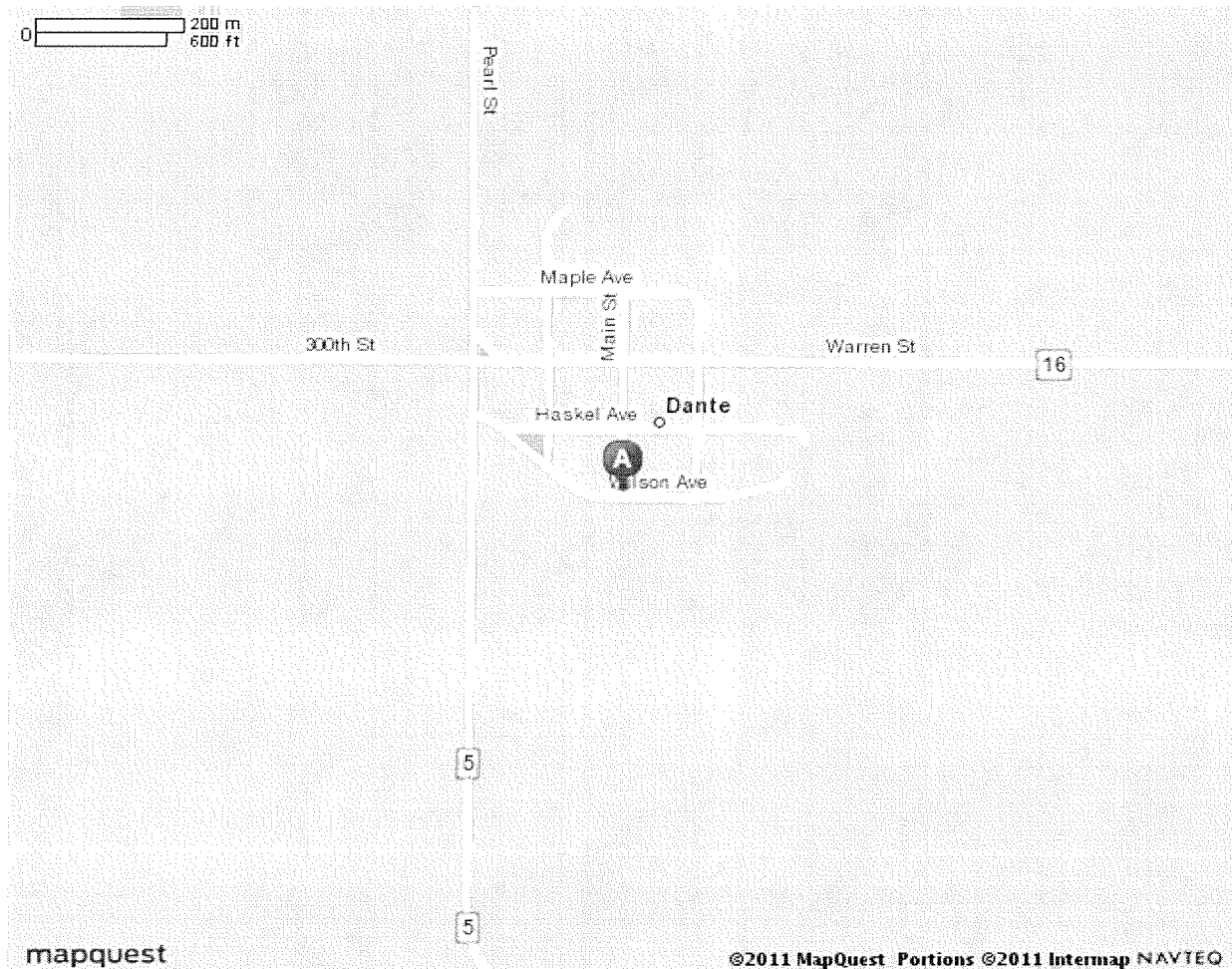


MAPQUEST

Map of Yankton Sioux Tribe

100 Main St, Marty, SD 57361 - (605) 384-3641

Notes



All rights reserved. Use subject to [License/Copyright](#) | [Map Legend](#)

Directions and maps are informational only. We make no warranties on the accuracy of their content, road conditions or route usability or expeditiousness. You assume all risk of use. MapQuest and its suppliers shall not be liable to you for any loss or delay resulting from your use of MapQuest. Your use of MapQuest means you agree to our [Terms of Use](#)

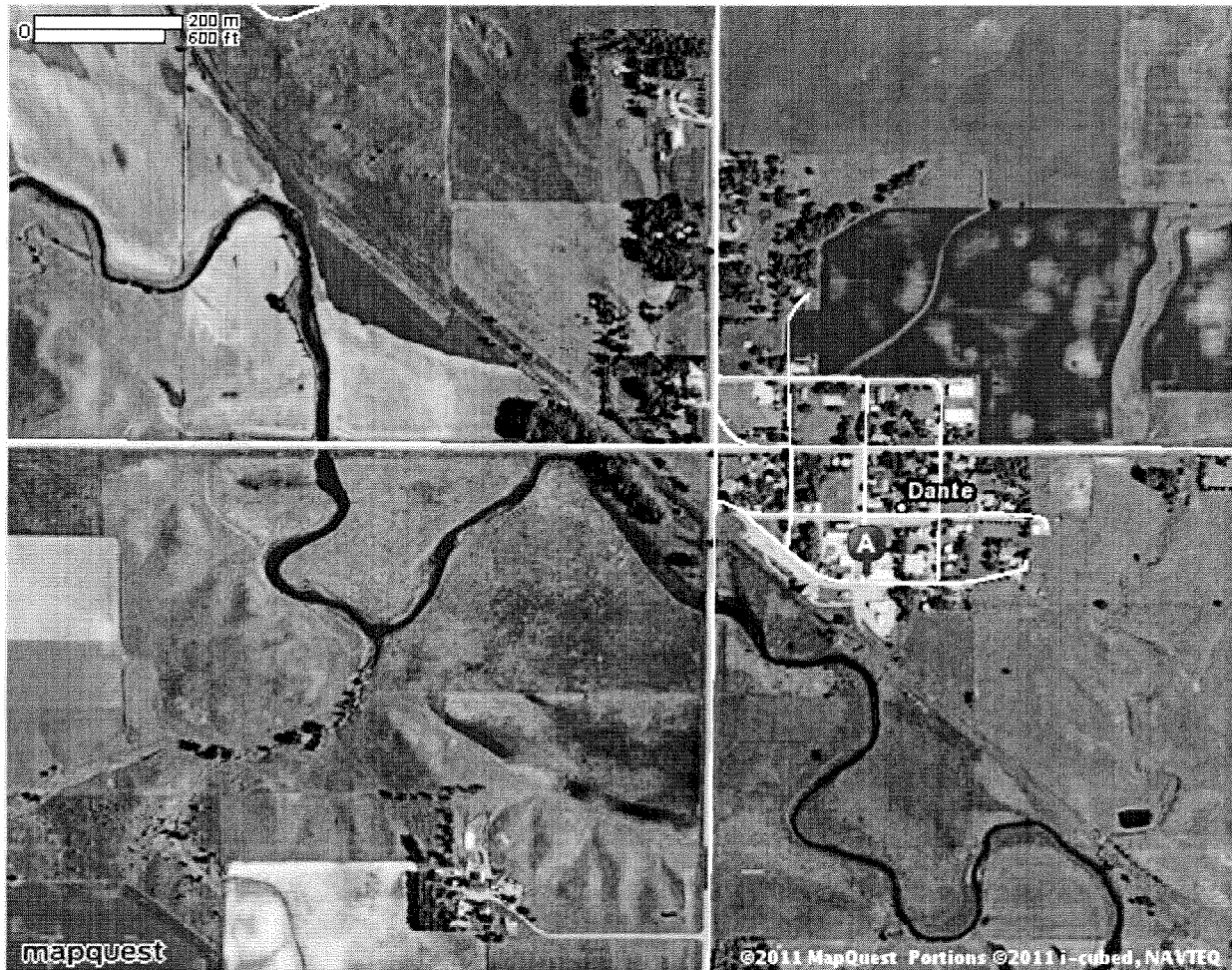


MAPQUEST

Map of Yankton Sioux Tribe

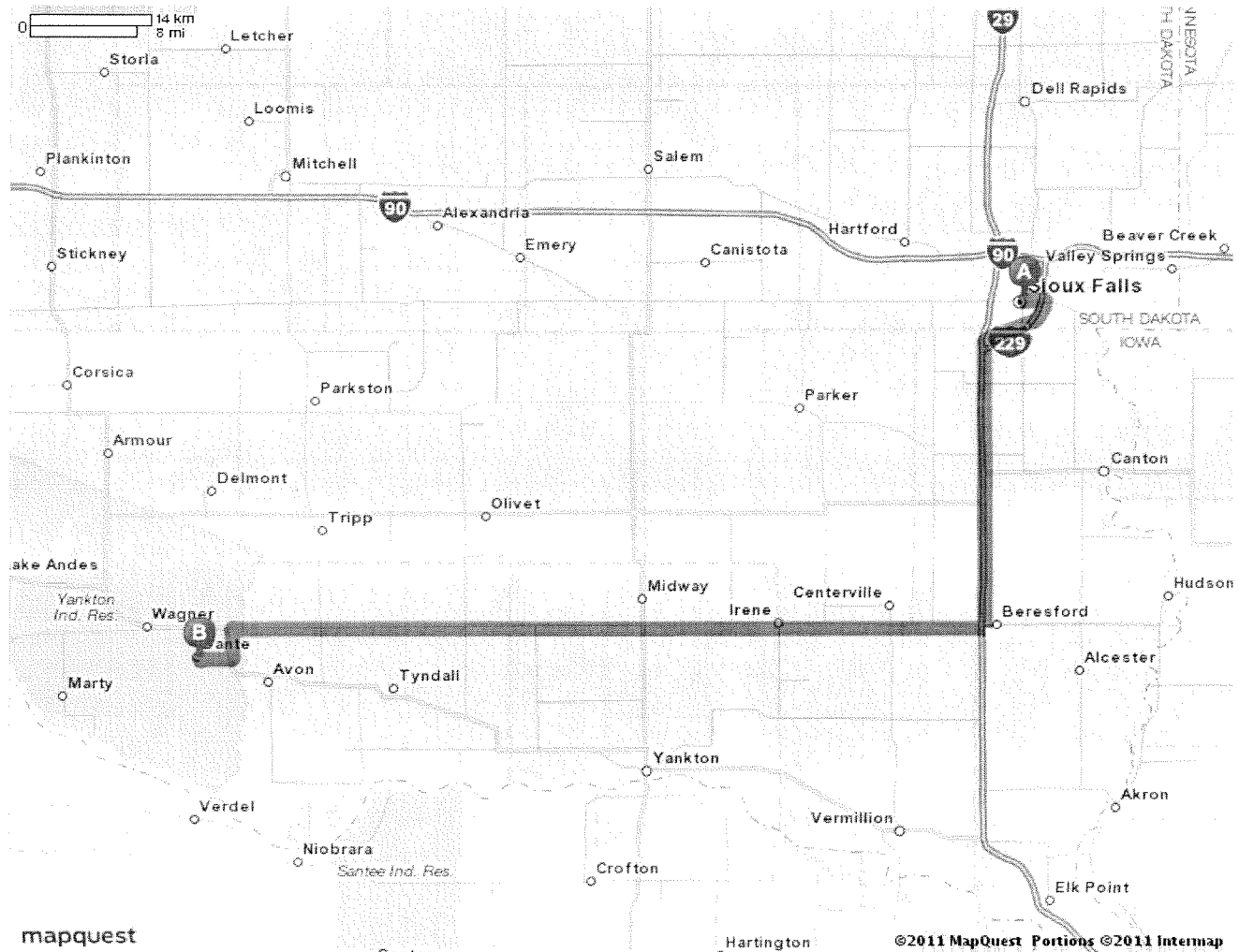
100 Main St, Marty, SD 57361 - (605) 384-3641

Notes



All rights reserved. Use subject to [License/Copyright](#) | [Map Legend](#)

Directions and maps are informational only. We make no warranties on the accuracy of their content, road conditions or route usability or expeditiousness. You assume all risk of use. MapQuest and its suppliers shall not be liable to you for any loss or delay resulting from your use of MapQuest. Your use of MapQuest means you agree to our [Terms of Use](#)



Sioux Falls, SD [Edit](#)



1. Start out going **SOUTH** on **S PHILLIPS AVE** toward **W 11TH ST/SD-42 E.** 0.1 mi



2. Turn **LEFT** onto **E 11TH ST/SD-42 E.** Continue to follow **SD-42 E.** 1.6 mi



3. Merge onto **I-229 S.** 6.7 mi



4. Merge onto **I-29 S** via **EXIT 1A** on the **LEFT.** 28.4 mi



5. Take the **SD-46** exit, **EXIT 47,** toward **BERESFORD/IRENE.** 0.3 mi



6. Turn **RIGHT** onto **SD-46.** 67.3 mi



7. Turn **LEFT** onto **SD-50.** 3.0 mi



8. Turn **RIGHT** onto **CR-16**.

2.9 mi



9. Turn **LEFT** onto **S MAIN ST**.

0.1 mi



10. **100 MAIN ST**.



Yankton Sioux Tribe[Edit](#)

100 Main St, Marty, SD 57361 - (605) 384-3641

Total Travel Estimate: **2 hours 7 minutes** / **110.31 miles** Fuel Cost: [Calculate](#)

Directions and maps are informational only. We make no warranties on the accuracy of their content, road conditions or route usability or expeditiousness. You assume all risk of use. MapQuest and its suppliers shall not be liable to you for any loss or delay resulting from your use of MapQuest.





EWG Farm Subsidy Database

Corporate Subsidy Recipients 1 to 1 of 1 in Washington

Business Name: **SPOKANE TRIBE**

Rank	Name	Location	Subsidy Total 1995-2010
1	<u>Spokane Tribe Of Indians</u>	Wellpinit, WA 99040	\$ 130,693.01

Note: The information on conservation spending for 2010 is incomplete due to missing data from USDA's Natural Resource Conservation Service. Payment data currently are not included for the Environmental Quality Incentives Program, but will be added once NRCS makes it available.

The information provided for the Wetland Reserve Program (WRP) provides an inaccurate picture of how WRP payments are distributed. USDA's Natural Resource Conservation Service uses title companies as intermediaries to finalize wetlands easements under the Wetlands Reserve Program. As a result, the data provided to us shows large sums of money going to these title companies. In reality, the payments are ultimately distributed to landowners participating in the WRP.

Unfortunately, NRCS has not provided the data to show where these farms and wetlands are located or which farmers or landowners are enrolling in the program, so EWG is unable to allocate these large sums of money to individuals beyond the title companies. Therefore, these companies skew the conservation rankings and payment concentration, which EWG cannot avoid unless and until NRCS makes available the additional farm attribution data. Therefore, we have not included WRP payments in the 2010 data update.

Finally, we have separated data on farm commodity, disaster and conservation payments in order to provide a more accurate picture of top recipients and concentration of payments among the three main categories of USDA programs.

USDA subsidy information for **Spokane Tribe Of Indians****Addresses on file with USDA for Spokane Tribe Of Indians**

USDA county office from which subsidies were paid:	Subsidy Payments 1995-2010	Most recent address on file in USDA county office
Stevens County, Washington	\$130,693	Spokane Tribe Of Indians Wellpinit, WA 99040
Total	\$130,693	

Note: The information on conservation spending for 2010 is incomplete due to missing data from USDA's Natural Resource Conservation Service. Payment data currently are not included for the Environmental Quality Incentives Program, but will be added once NRCS makes it available.

The information provided for the Wetland Reserve Program (WRP) provides an inaccurate picture of how WRP payments are distributed. USDA's Natural Resource Conservation Service uses title companies as intermediaries to finalize wetlands easements under the Wetlands Reserve Program. As a result, the data provided to us shows large sums of money going to these title companies. In reality, the payments are ultimately distributed to landowners participating in the WRP.

Unfortunately, NRCS has not provided the data to show where these farms and wetlands are located or which farmers or landowners are enrolling in the program, so EWG is unable to allocate these large sums of money to individuals beyond the title companies. Therefore, these companies skew the conservation rankings and payment concentration, which EWG cannot avoid unless and until NRCS makes available the additional farm attribution data. Therefore, we have not included WRP payments in the 2010 data update.

Finally, we have separated data on farm commodity, disaster and conservation payments in order to provide a more accurate picture of top recipients and concentration of payments among the three main categories of USDA programs.



Spokane Tribe Of Indians received payments totaling \$130,693 from 1995 through 2010

Year	Conservation Subsidies	Disaster Subsidies	Commodity Subsidies	Total USDA Subsidies 1995-2010
1995	\$0	\$0	\$0	\$0
1996	\$15,768	\$0	\$430	\$16,198
1997	\$0	\$0	\$381	\$381
1998	\$0	\$0	\$2,664	\$2,664
1999	\$0	\$0	\$4,622	\$4,622
2000	\$8,405	\$0	\$4,445	\$12,850
2001	\$9,821	\$0	\$6,595	\$16,416
2002	\$5,251	\$0	\$2,969	\$8,220
2003	\$11,938	\$0	\$1,835	\$13,773
2004	\$4,825	\$0	\$5,293	\$10,118
2005	\$1,864	\$0	\$6,345	\$8,209
2006	\$1,864	\$0	\$6,538	\$8,402
2007	\$1,864	\$0	\$6,287	\$8,151
2008	\$1,864	\$0	\$6,239	\$8,103
2009	\$0	\$0	\$6,111	\$6,111
2010	\$0	\$0	\$6,475	\$6,475
Total	\$63,464	\$0	\$67,229	\$130,693

Crop Summary for Spokane Tribe Of Indians

Crop	Payments 1995-2010
Wheat Subsidies**	\$49,310
Barley Subsidies**	\$3,691
Corn Subsidies**	\$1,489
Oat Subsidies**	\$82

Note: The information on conservation spending for 2010 is incomplete due to missing data from USDA's Natural Resource Conservation Service. Payment data currently are not included for the Environmental Quality Incentives Program, but will be added once NRCS makes it available.

The information provided for the Wetland Reserve Program (WRP) provides an inaccurate picture of how WRP payments are distributed. USDA's Natural Resource Conservation Service uses title companies as intermediaries to finalize wetlands easements under the Wetlands Reserve Program. As a result, the data provided to us shows large sums of money going to these title companies, in reality, the payments are ultimately distributed to landowners participating in the WRP.

USDA subsidy information for **Spokane Tribe Of Indians****Payment Breakdown**

Subsidy Program	Total Payments 1995-2010
Total USDA - Subsidies	\$130,693
<i>Subtotal, Farming Subsidies</i>	\$67,229
<i>Subtotal, Conservation Programs</i>	\$63,464

Commodity subsidy breakdown

Subsidy Program	Total Payments 1995-2010
Subtotal, Farming Subsidies	\$67,229
<i>Total Direct Payments</i>	\$44,604
Direct Program Payments - 2008 Farm Bill	\$12,586
Direct Payment - Barley	\$2,390
Direct Payment - Oats	\$45
Direct Payment - Wheat	\$29,583
<i>Total Counter Cyclical Payments</i>	\$513
Counter Cyclical Payment - Barley	\$513
<i>Production Flexibility Contracts</i>	\$13,058
Production Flexibility - Barley	\$466
Production Flexibility - Corn	\$962
Production Flexibility - Oats	\$24
Production Flexibility - Wheat	\$11,606
<i>Mkt. Loss Asst. - Commodity Crops</i>	\$8,983
Market Loss Assistance - Barley	\$322
Market Loss Assistance - Corn	\$527
Market Loss Assistance - Oats	\$13
Market Loss Assistance - Wheat	\$8,121
<i>Misc. Farm - Subsidies</i>	\$71
Interest Penalty Payments	\$71

Conservation subsidy breakdown

Subsidy Program	Total Payments 1995-2010
Subtotal, Conservation Programs	\$63,464
<i>Conservation Reserve Program</i>	\$8,550


CRP - Annual Land Rental	\$8,550
Env. Quality Incentive Program	\$39,146
EQIP - Regular	\$23,477
EQIP - Acp	\$15,669
Agricultural Conservation Program	\$15,768
ACP - Regular	\$15,768

Note: The information on conservation spending for 2010 is incomplete due to missing data from USDA's Natural Resource Conservation Service. Payment data currently are not included for the Environmental Quality Incentives Program, but will be added once NRCS makes it available.

The information provided for the Wetland Reserve Program (WRP) provides an inaccurate picture of how WRP payments are distributed. USDA's Natural Resource Conservation Service uses title companies as intermediaries to finalize wetlands easements under the Wetlands Reserve Program. As a result, the data provided to us shows large sums of money going to these title companies. In reality, the payments are ultimately distributed to landowners participating in the WRP.

Unfortunately, NRCS has not provided the data to show where these farms and wetlands are located or which farmers or landowners are enrolling in the program, so EWG is unable to allocate these large sums of money to individuals beyond the title companies. Therefore, these companies skew the conservation rankings and payment concentration, which EWG cannot avoid unless and until NRCS makes available the additional farm attribution data. Therefore, we have not included WRP payments in the 2010 data update.

Finally, we have separated data on farm commodity, disaster and conservation payments in order to provide a more accurate picture of top recipients and concentration of payments among the three main categories of USDA programs.

USDA subsidy information for **Spokane Tribe Of Indians****Ownership shares for Spokane Tribe Of Indians**Pick year for ownership information 

USDA county office/Ownership:

Percentage
Share*

Spokane Tribe Of Indians
ownership information from 2008
Stevens County, Washington

Members Of Spokane Tribe Of India**100.00%**

* According to USDA percentage shares for ownership may not reflect share of subsidy payments. EWG review shows that share information on file with USDA may not always equal 100 percent. Most recent percentage share information is from 2008. Future release of this information was barred by law in the 2008 Farm Bill.

Note: The information on conservation spending for 2010 is incomplete due to missing data from USDA's Natural Resource Conservation Service. Payment data currently are not included for the Environmental Quality Incentives Program, but will be added once NRCS makes it available.

The information provided for the Wetland Reserve Program (WRP) provides an inaccurate picture of how WRP payments are distributed. USDA's Natural Resource Conservation Service uses title companies as intermediaries to finalize wetlands easements under the Wetlands Reserve Program. As a result, the data provided to us shows large sums of money going to these title companies. In reality, the payments are ultimately distributed to landowners participating in the WRP.

Unfortunately, NRCS has not provided the data to show where these farms and wetlands are located or which farmers or landowners are enrolling in the program, so EWG is unable to allocate these large sums of money to individuals beyond the title companies. Therefore, these companies skew the conservation rankings and payment concentration, which EWG cannot avoid unless and until NRCS makes available the additional farm attribution data. Therefore, we have not included WRP payments in the 2010 data update.

Finally, we have separated data on farm commodity, disaster and conservation payments in order to provide a more accurate picture of top recipients and concentration of payments among the three main categories of USDA programs.

USDA subsidy information for **Members Of Spokane Tribe Of India****Recipient's ownership share(s)**

Recipient:	County	Percentage Share*
	Stevens County, Washington	100.0 %
<u>Spokane Tribe Of Indians</u>	Stevens County, Washington	100.0 %
	Stevens County, Washington	100.0 %

* Most recent percentage share information is from 2008. According to USDA percentage shares for ownership may not reflect share of subsidy payments. EWG review shows that share information on file with USDA may not equal 100 percent.

Note: The information on conservation spending for 2010 is incomplete due to missing data from USDA's Natural Resource Conservation Service. Payment data currently are not included for the Environmental Quality Incentives Program, but will be added once NRCS makes it available.

The information provided for the Wetland Reserve Program (WRP) provides an inaccurate picture of how WRP payments are distributed. USDA's Natural Resource Conservation Service uses title companies as intermediaries to finalize wetlands easements under the Wetlands Reserve Program. As a result, the data provided to us shows large sums of money going to these title companies. In reality, the payments are ultimately distributed to landowners participating in the WRP.

Unfortunately, NRCS has not provided the data to show where these farms and wetlands are located or which farmers or landowners are enrolling in the program, so EWG is unable to allocate these large sums of money to individuals beyond the title companies. Therefore, these companies skew the conservation rankings and payment concentration, which EWG cannot avoid unless and until NRCS makes available the additional farm attribution data. Therefore, we have not included WRP payments in the 2010 data update.

Finally, we have separated data on farm commodity, disaster and conservation payments in order to provide a more accurate picture of top recipients and concentration of payments among the three main categories of USDA programs.



There's a new MapQuest - come try it out!

MAPQUEST.

Sorry! When printing directly from the browser your directions or map may not print correctly. For best results, try clicking the Printer-Friendly button.

- | | |
|--|---|
| 1 <u>Spokane Tribe Indians</u>
6290 Ford Wellpinit Rd # B, Wellpinit, WA
(509) 258-7865 | 2 <u>Spokane Tribe of Indians</u>
- Unable to Locate
6208 Ford Wellpinit Rd, Springdale, WA
(509) 258-7121 |
| 3 <u>Spokane-Tribe-Indians Utility</u>
6461 Sherwood Loop Rd #5, Wellpinit, WA
(509) 258-9114 | 4 <u>Spokane Tribe-Indians Motor</u>
6461 Sherwood Loop Rd, Wellpinit, WA
(509) 258-7412 |
| 5 <u>Spokane Tribe of Indians</u>
6401 Sherwood Loop Rd, Wellpinit, WA
(509) 258-7129 | 6 <u>Spokan Tribe of Indians</u>
- Unable to Locate
6046 C W End Rd, Wellpinit, WA
(509) 722-6570 |
| 7 <u>Spokane Tribe of Indians Court</u>
- Unable to Locate
Agency Sg Rd Bldg 158, Wellpinit, WA
(509) 258-7717 | 8 <u>Spokane Tribe-Indians AmbInc</u>
- Unable to Locate
6230 Old School Rd, Wellpinit, WA
(509) 258-7766 |
| 9 <u>Spokane Tribe-Indians Housing</u>
- Unable to Locate
6401 Sherwood Addition Rd, Wellpinit, WA
(509) 258-4523 | 10 <u>Spokane Tribe of Indians</u>
2555 Smith Rd, Chewelah, WA
(509) 935-6848 |

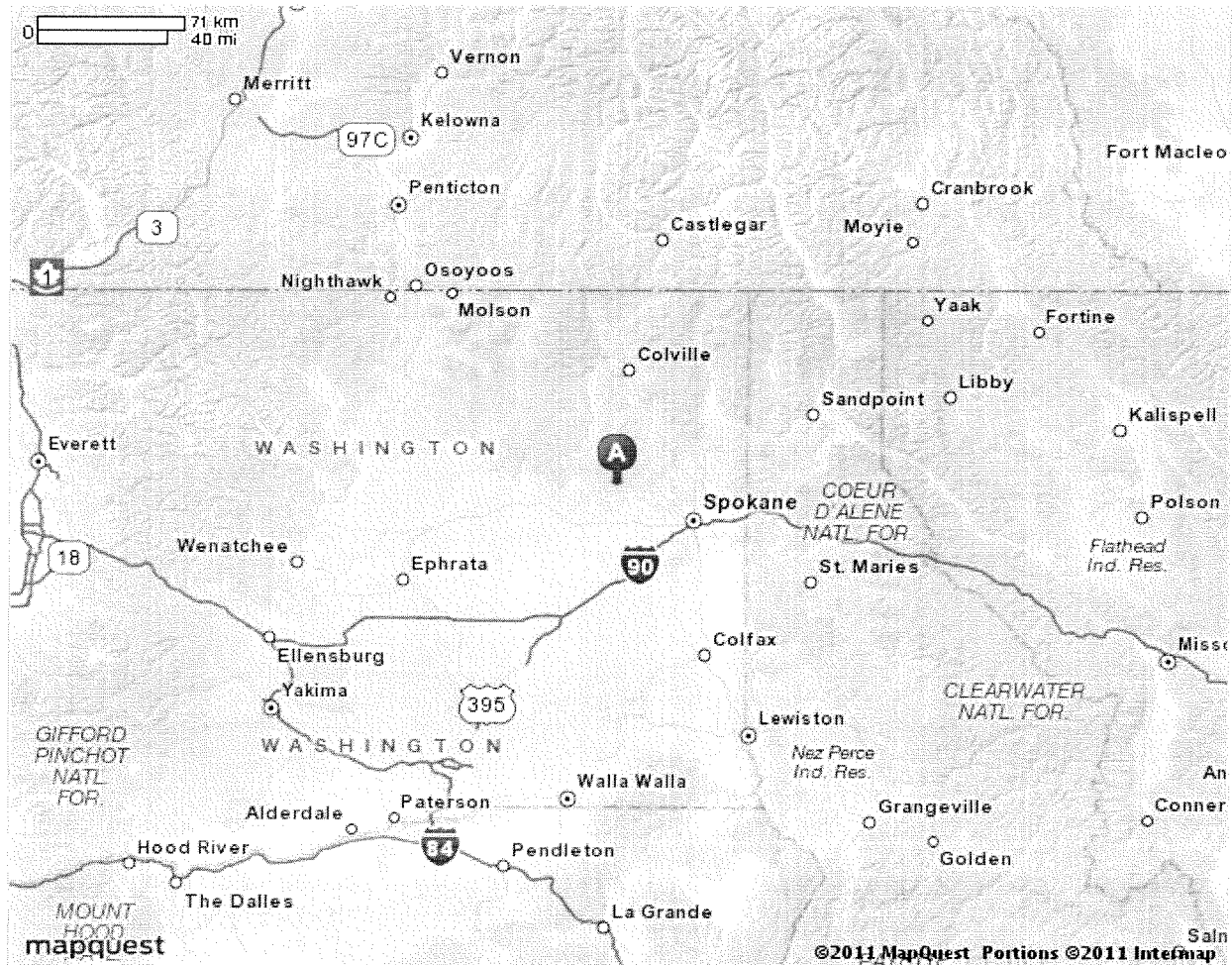


MAPQUEST

Map of Spokane Tribe of Indians

6401 Sherwood Loop Rd, Wellpinit,
WA 99040 - (509) 258-7129

Notes



All rights reserved. Use subject to License/Copyright | [Map Legend](#)

Directions and maps are informational only. We make no warranties on the accuracy of their content, road conditions or route usability or expeditiousness. You assume all risk of use. MapQuest and its suppliers shall not be liable to you for any loss or delay resulting from your use of MapQuest. Your use of MapQuest means you agree to our [Terms of Use](#)

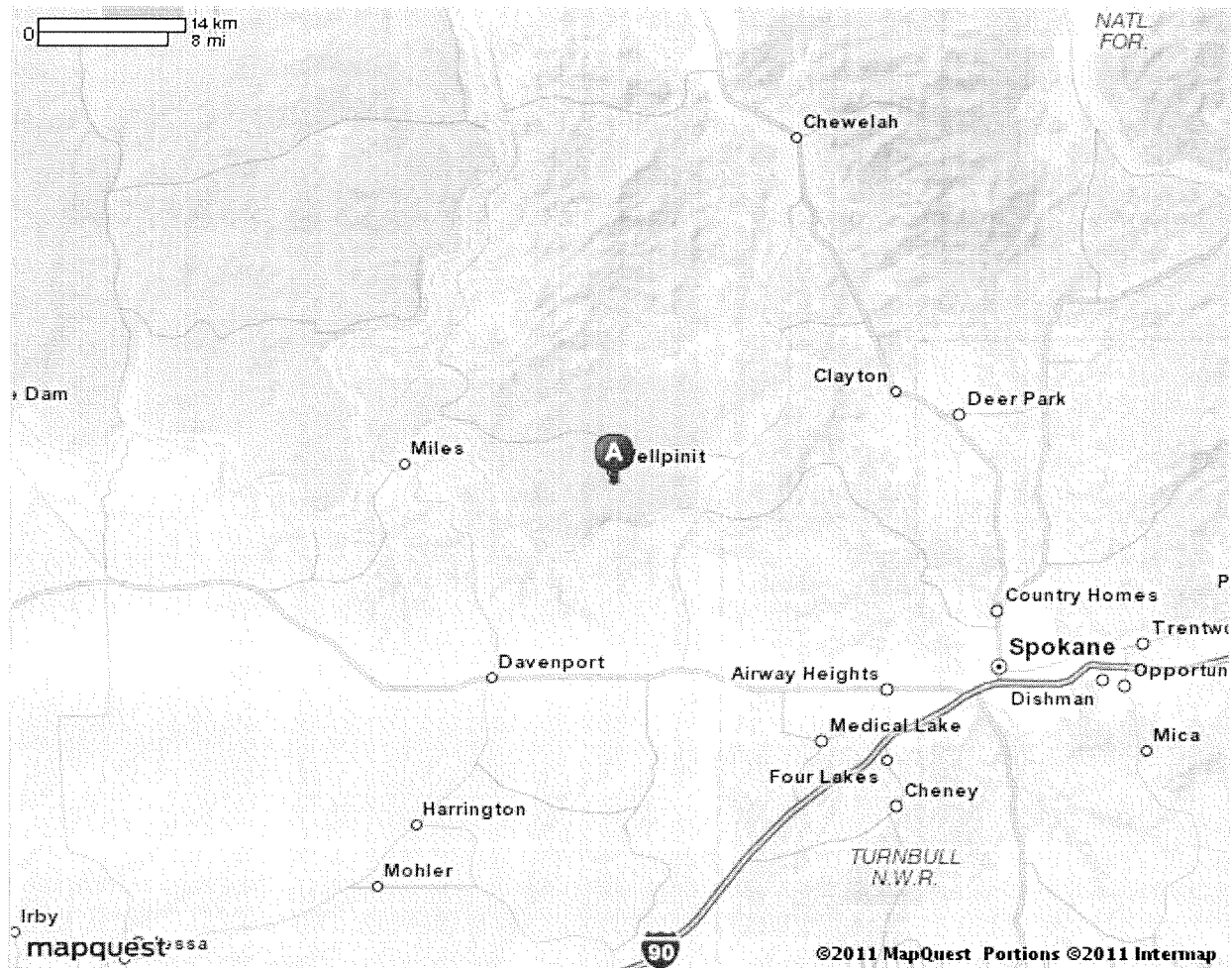


MAPQUEST

Map of Spokane Tribe of Indians

6401 Sherwood Loop Rd, Wellpinit,
WA 99040 - (509) 258-7129

Notes



All rights reserved. Use subject to License/Copyright | [Map Legend](#)

Directions and maps are informational only. We make no warranties on the accuracy of their content, road conditions or route usability or expeditiousness. You assume all risk of use. MapQuest and its suppliers shall not be liable to you for any loss or delay resulting from your use of MapQuest. Your use of MapQuest means you agree to our [Terms of Use](#)

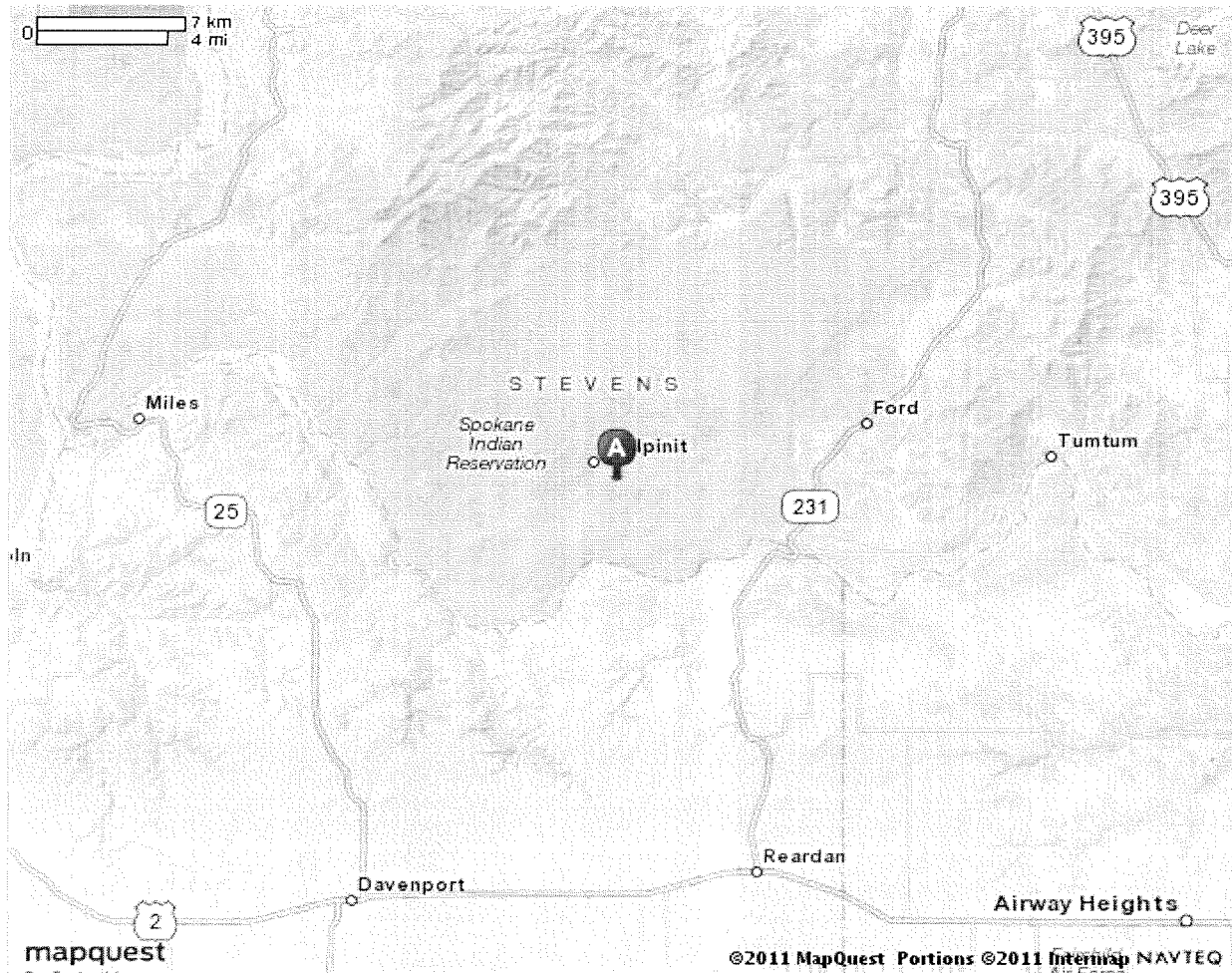


MAPQUEST

Map of Spokane Tribe of Indians

6401 Sherwood Loop Rd, Wellpinit,
WA 99040 - (509) 258-7129

Notes



All rights reserved. Use subject to License/Copyright | [Map Legend](#)

Directions and maps are informational only. We make no warranties on the accuracy of their content, road conditions or route usability or expeditiousness. You assume all risk of use. MapQuest and its suppliers shall not be liable to you for any loss or delay resulting from your use of MapQuest. Your use of MapQuest means you agree to our [Terms of Use](#)



MAPQUEST

Map of Spokane Tribe of Indians

6401 Sherwood Loop Rd, Wellpinit,
WA 99040 - (509) 258-7129

Notes



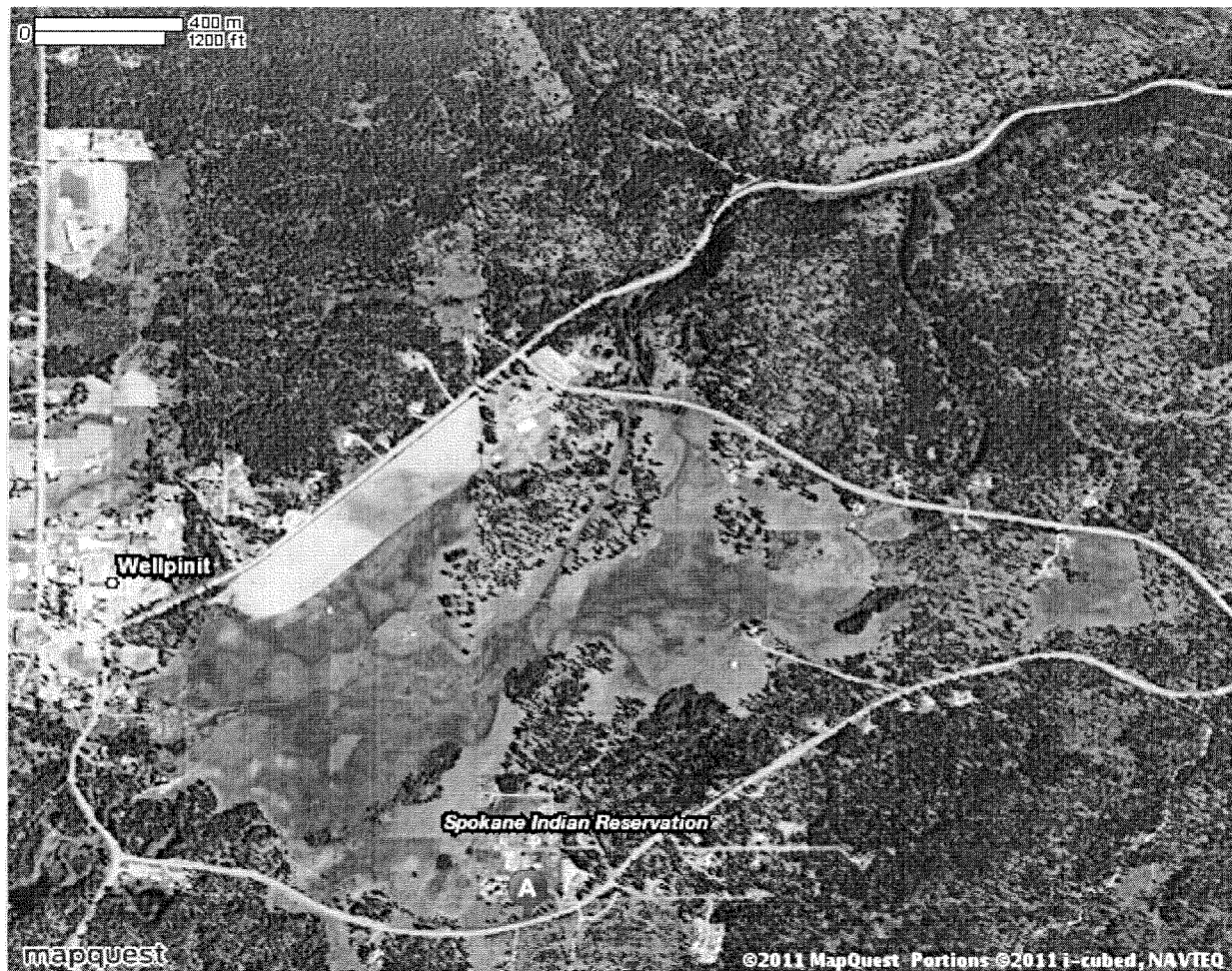
All rights reserved. Use subject to [License/Copyright](#) | [Map Legend](#)

Directions and maps are informational only. We make no warranties on the accuracy of their content, road conditions or route usability or expeditiousness. You assume all risk of use. MapQuest and its suppliers shall not be liable to you for any loss or delay resulting from your use of MapQuest. Your use of MapQuest means you agree to our [Terms of Use](#)

**MAPQUEST****Map of Spokane Tribe of Indians**

6401 Sherwood Loop Rd, Wellpinit,
WA 99040 - (509) 258-7129

Notes



All rights reserved. Use subject to [License/Copyright](#) | [Map Legend](#)

Directions and maps are informational only. We make no warranties on the accuracy of their content, road conditions or route usability or expeditiousness. You assume all risk of use. MapQuest and its suppliers shall not be liable to you for any loss or delay resulting from your use of MapQuest. Your use of MapQuest means you agree to our [Terms of Use](#)



MAPQUEST

Trip to Spokane Tribe of Indians

6401 Sherwood Loop Rd, Wellpinit,
WA 99040 - (509) 258-7129
43.90 miles - about 1 hour 2 minutes

Notes



University of Phoenix®

Online and Campus Programs

Bachelor's Degrees

Business
Nursing
Education
Communications
Criminal Justice
Health Admin.
Info. Technology

Master's Degrees

MBA
Education
Nursing

Doctoral Degrees

Business Admin.
Health Admin.

[Learn More ►](#)



Spokane, WA



1. Start out going **NORTH** on **N LINCOLN ST** toward **W MAIN AVE.**

go 0.0 mi



2. Turn **LEFT** onto **W MAIN AVE.**

go 0.0 mi



3. Turn **LEFT** onto **N MONROE ST.**

go 0.4 mi



4. Turn **RIGHT** onto **FREEWAY AVE N.**

go 0.1 mi



5. Merge onto **I-90 W / US-2 W / US-395 S** via the ramp on the **LEFT**.

go 2.2 mi



6. Merge onto **US-2 W** via **EXIT 277** toward **FAIRCHILD AFB / DAVENPORT / SPOKANE AIRPORT.**

go 19.6 mi



7. Turn **RIGHT** onto **N ASPEN ST / WA-231**. Continue to follow **WA-231**.

go 11.6 mi



8. Turn **LEFT** onto **LITTLE FALLS RD E.**

go 2.7 mi



9. Turn **LEFT** onto **WELLPINIT-LITTLE FALLS RD / BIA-27.**

go 2.7 mi



10. Turn **SLIGHT RIGHT** to stay on **WELLPINIT-LITTLE FALLS RD / BIA-27**.

go 3.7 mi



11. Turn **RIGHT** onto **SHERWOOD LOOP RD / BIA-18**.

go 0.7 mi



12. 6401 **SHERWOOD LOOP RD** is on the **RIGHT**.

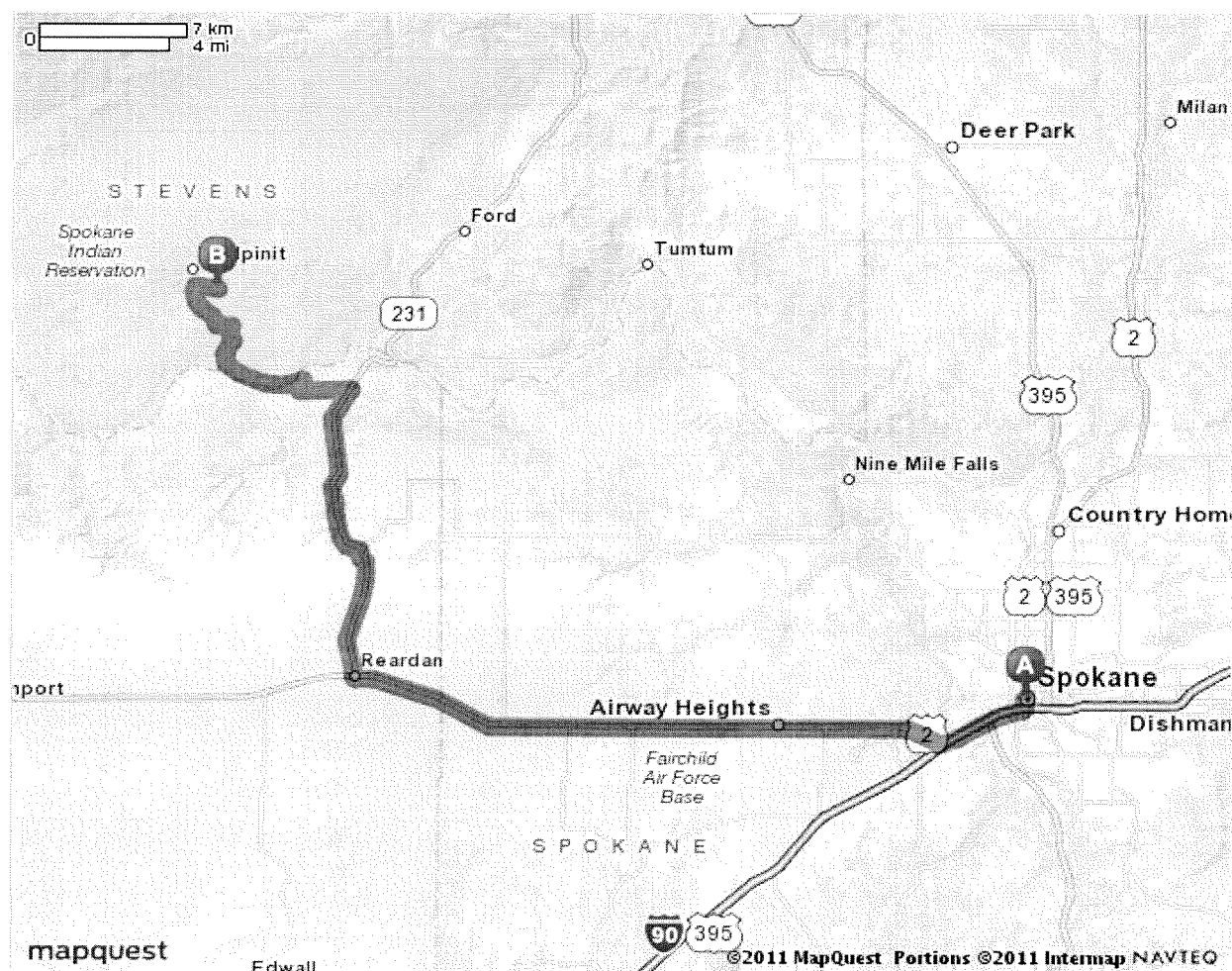
go 0.0 mi



Spokane Tribe of Indians - (509) 258-7129
6401 Sherwood Loop Rd, Wellpinit, WA 99040

Total Travel Estimate : 43.90 miles - about 1 hour 2 minutes

Route Map [Hide](#)



All rights reserved. Use subject to [License/Copyright](#) | [Map Legend](#)

Directions and maps are informational only. We make no warranties on the accuracy of their content, road conditions or route usability or expeditiousness. You assume all risk of use. MapQuest and its suppliers shall not be liable to you for any loss or delay resulting from your use of MapQuest. Your use of MapQuest means you agree to our [Terms of Use](#)

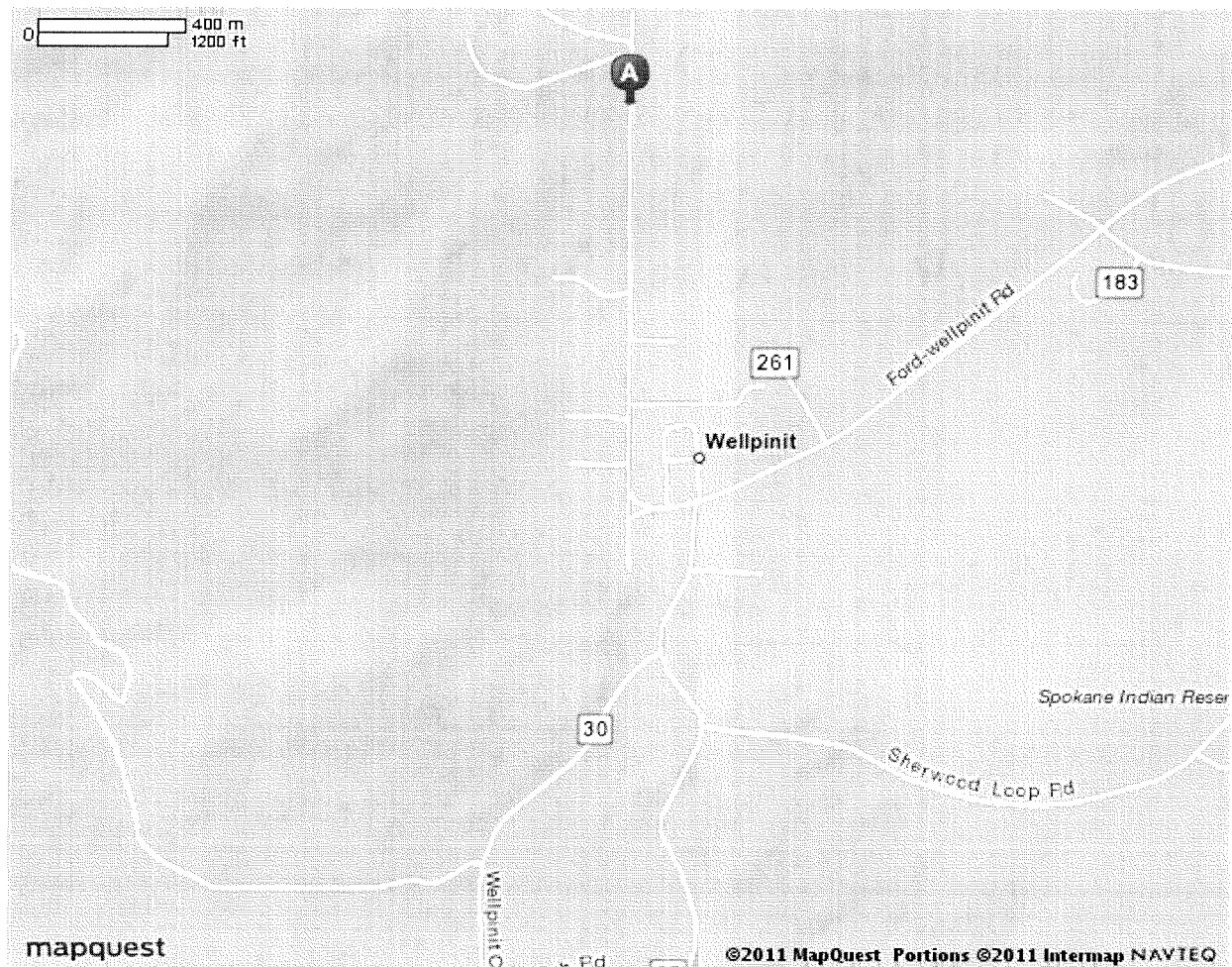


MAPQUEST

Map of Spokane Tribe Indians

6290 Ford Wellpinit Rd # B, Wellpinit,
WA 99040 - (509) 258-7865

Notes



All rights reserved. Use subject to License/Copyright | [Map Legend](#)

Directions and maps are informational only. We make no warranties on the accuracy of their content, road conditions or route usability or expeditiousness. You assume all risk of use. MapQuest and its suppliers shall not be liable to you for any loss or delay resulting from your use of MapQuest. Your use of MapQuest means you agree to our [Terms of Use](#)

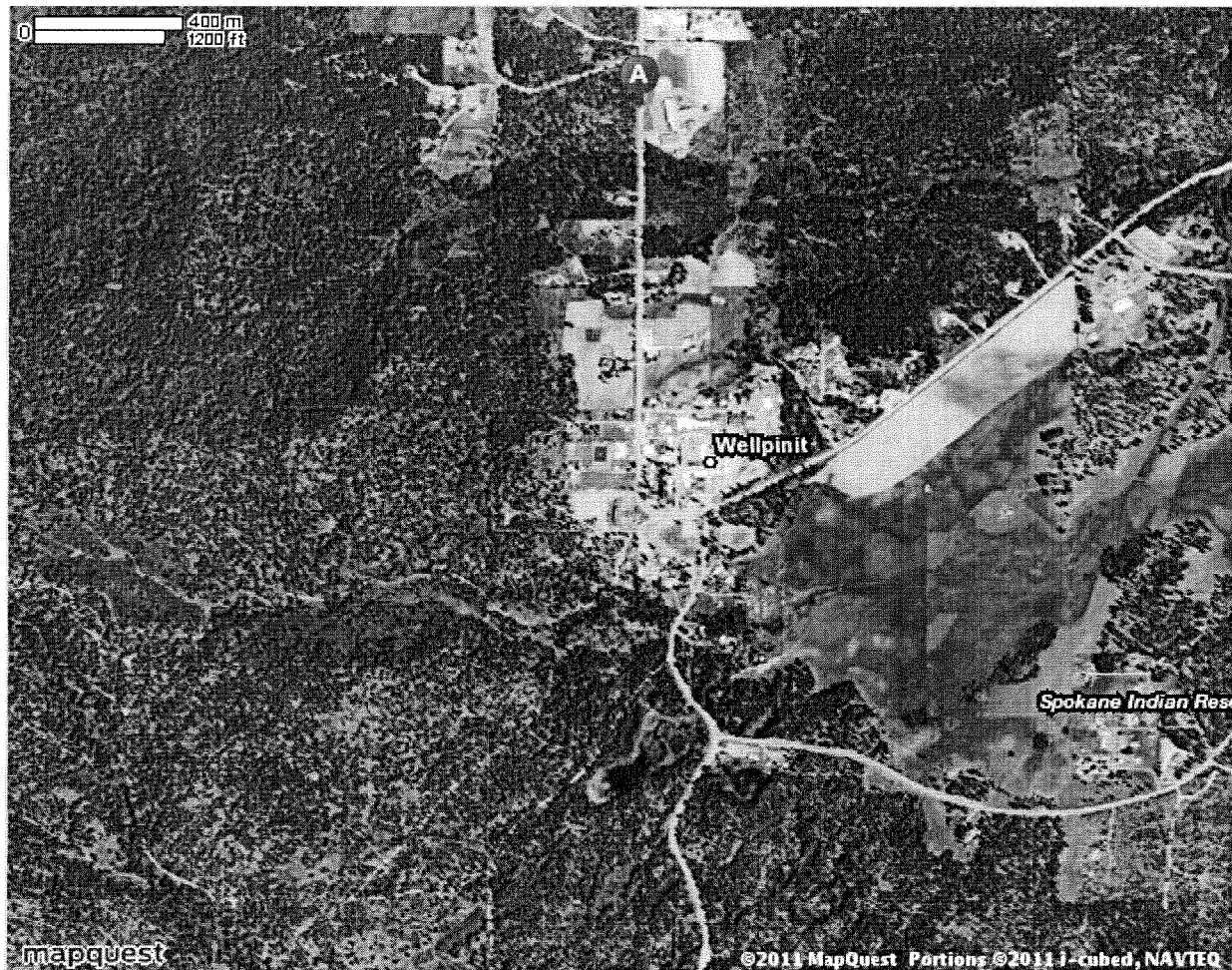


MAPQUEST

Map of Spokane Tribe Indians

6290 Ford Wellpinit Rd # B, Wellpinit,
WA 99040 - (509) 258-7865

Notes



All rights reserved. Use subject to License/Copyright | [Map Legend](#)

Directions and maps are informational only. We make no warranties on the accuracy of their content, road conditions or route usability or expeditiousness. You assume all risk of use. MapQuest and its suppliers shall not be liable to you for any loss or delay resulting from your use of MapQuest. Your use of MapQuest means you agree to our [Terms of Use](#)

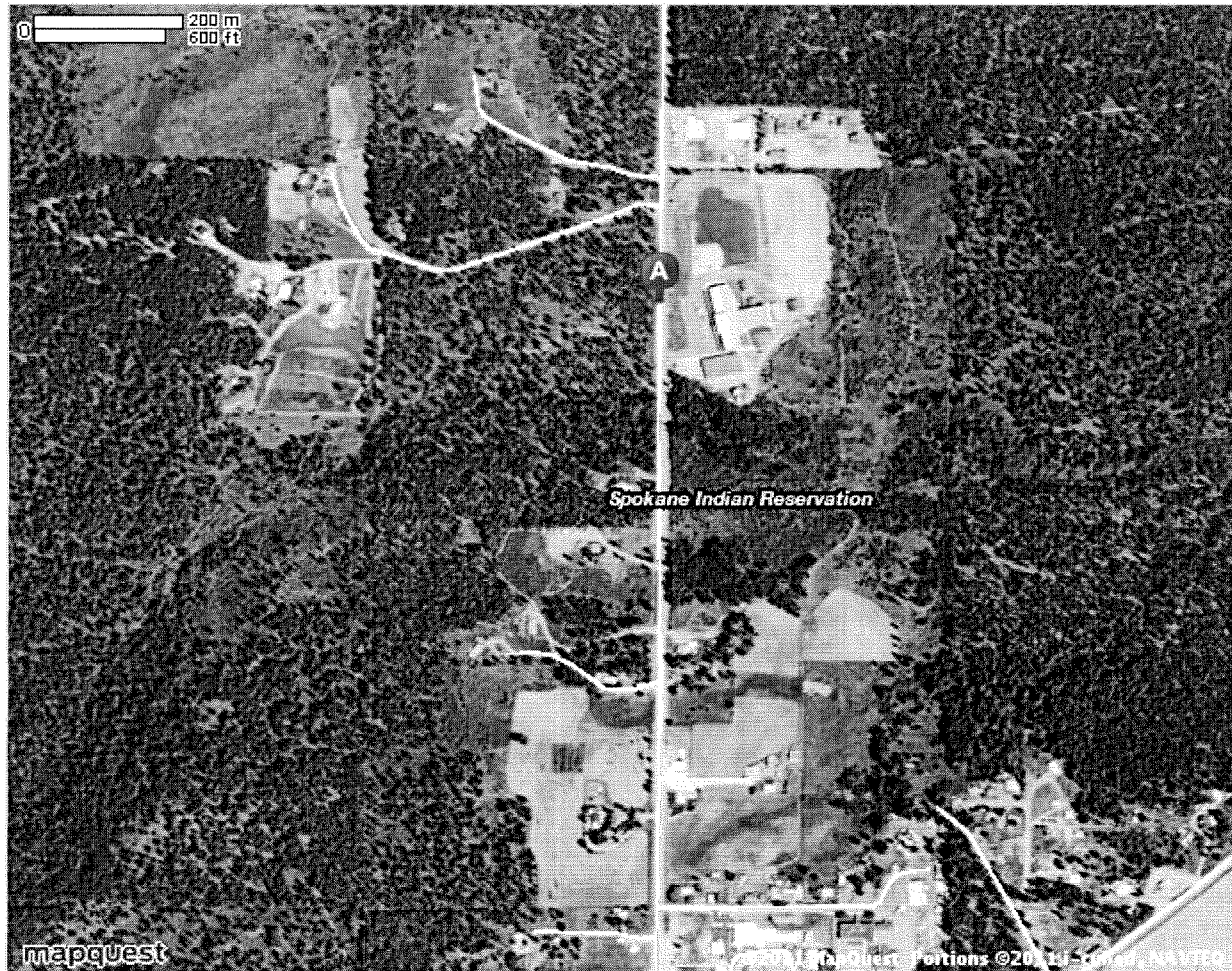


MAPQUEST

Map of Spokane Tribe Indians

6290 Ford Wellpinit Rd # B, Wellpinit,
WA 99040 - (509) 258-7865

Notes



[All rights reserved. Use subject to License/Copyright](#) | [Map Legend](#)

Directions and maps are informational only. We make no warranties on the accuracy of their content, road conditions or route usability or expeditiousness. You assume all risk of use. MapQuest and its suppliers shall not be liable to you for any loss or delay resulting from your use of MapQuest. Your use of MapQuest means you agree to our [Terms of Use](#)



Notes

Trip to Spokane Tribe Indians

6290 Ford Wellpinit Rd # B, Wellpinit,

WA 99040 - (509) 258-7865

44.57 miles - about 1 hour 3 minutes



Spokane, WA



1. Start out going **NORTH** on **N LINCOLN ST** toward **W MAIN AVE.**

go 0.0 mi



2. Turn **LEFT** onto **W MAIN AVE.**

go 0.0 mi



3. Turn **LEFT** onto **N MONROE ST.**

go 0.4 mi



4. Turn **RIGHT** onto **FREEWAY AVE N.**

go 0.1 mi



5. Merge onto **I-90 W / US-2 W / US-395 S** via the ramp on the **LEFT.**

go 2.2 mi



6. Merge onto **US-2 W** via **EXIT 277** toward **FAIRCHILD AFB / DAVENPORT / SPOKANE AIRPORT.**

go 19.6 mi



7. Turn **RIGHT** onto **N ASPEN ST / WA-231.** Continue to follow **WA-231.**

go 11.6 mi



8. Turn **LEFT** onto **LITTLE FALLS RD E.**

go 2.7 mi



9. Turn **LEFT** onto **WELLPINIT-LITTLE FALLS RD / BIA-27.**

go 2.7 mi



10. Turn **SLIGHT RIGHT** to stay on **WELLPINIT-LITTLE FALLS RD / BIA-27.**

go 4.1 mi



11. Turn **LEFT** onto **FORD-WELLPINIT RD.**

go 0.9 mi

12. **6290 FORD WELLPINIT RD # B.**

go 0.0 mi

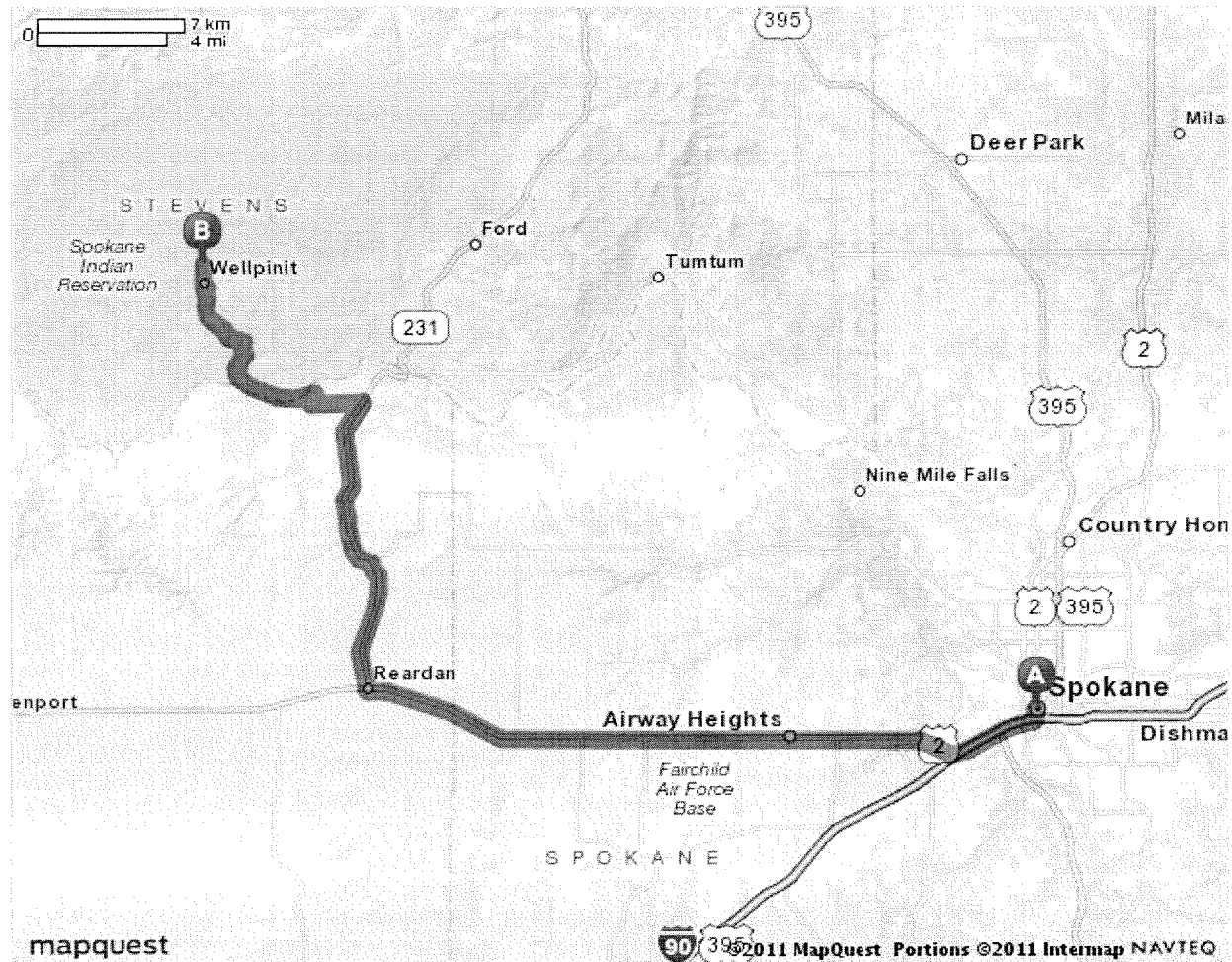
END



Spokane Tribe Indians - (509) 258-7865
6290 Ford Wellpinit Rd # B, Wellpinit, WA 99040

Total Travel Estimate : 44.57 miles - about 1 hour 3 minutes

Route Map [Hide](#)



All rights reserved. Use subject to [License/Copyright](#) | [Map Legend](#)

Directions and maps are informational only. We make no warranties on the accuracy of their content, road conditions or route usability or expeditiousness. You assume all risk of use. MapQuest and its suppliers shall not be liable to you for any loss or delay resulting from your use of MapQuest. Your use of MapQuest means you agree to our [Terms of Use](#)