

## EWG Farm Subsidy Database

### Corporate Subsidy Recipients 1 to 1 of 1 in Montana

Business Name: **KILBY BUTTE**

Rank	Name	Location	Subsidy Total 1995-2010
1	<u>Kilby Butte Colony</u>	Roundup, MT 59072	\$ 466,134.49

**Note:** The information on conservation spending for 2010 is incomplete due to missing data from USDA's Natural Resource Conservation Service. Payment data currently are not included for the Environmental Quality Incentives Program, but will be added once NRCS makes it available.

The information provided for the Wetland Reserve Program (WRP) provides an inaccurate picture of how WRP payments are distributed. USDA's Natural Resource Conservation Service uses title companies as intermediaries to finalize wetlands easements under the Wetlands Reserve Program. As a result, the data provided to us shows large sums of money going to these title companies. In reality, the payments are ultimately distributed to landowners participating in the WRP.

Unfortunately, NRCS has not provided the data to show where these farms and wetlands are located or which farmers or landowners are enrolling in the program, so EWG is unable to allocate these large sums of money to individuals beyond the title companies. Therefore, these companies skew the conservation rankings and payment concentration, which EWG cannot avoid unless and until NRCS makes available the additional farm attribution data. Therefore, we have not included WRP payments in the 2010 data update.

Finally, we have separated data on farm commodity, disaster and conservation payments in order to provide a more accurate picture of top recipients and concentration of payments among the three main categories of USDA programs.

### USDA subsidy information for **Kilby Butte Hutterian Brethren In**

#### Addresses on file with USDA for Kilby Butte Hutterian Brethren In

USDA county office from which subsidies were paid:	Subsidy Payments 1995-2010	Most recent address on file in USDA county office
Unknown county in Montana	\$0	Kilby Butte Colony Roundup, MT 59072
Musselshell County, Montana	\$445,087	Kilby Butte Hutterian Brethren In Roundup, MT 59072
<b>Total</b>	<b>\$466,134</b>	

**Note:** The information on conservation spending for 2010 is incomplete due to missing data from USDA's Natural Resource Conservation Service. Payment data currently are not included for the Environmental Quality Incentives Program, but will be added once NRCS makes it available.

The information provided for the Wetland Reserve Program (WRP) provides an inaccurate picture of how WRP payments are distributed. USDA's Natural Resource Conservation Service uses title companies as intermediaries to finalize wetlands easements under the Wetlands Reserve Program. As a result, the data provided to us shows large sums of money going to these title companies. In reality, the payments are ultimately distributed to landowners participating in the WRP.

Unfortunately, NRCS has not provided the data to show where these farms and wetlands are located or which farmers or landowners are enrolling in the program, so EWG is unable to allocate these large sums of money to individuals beyond the title companies. Therefore, these companies skew the conservation rankings and payment concentration, which EWG cannot avoid unless and until NRCS makes available the additional farm attribution data. Therefore, we have not included WRP payments in the 2010 data update.

Finally, we have separated data on farm commodity, disaster and conservation payments in order to provide a more accurate picture of top recipients and concentration of payments among the three main categories of USDA programs.



**Kilby Butte Hutterian Brethren In** received payments totaling **\$466,134** from 1995 through 2010

Year	Conservation Subsidies	Disaster Subsidies	Commodity Subsidies	Total USDA Subsidies 1995-2010
1995	\$2,030	\$0	\$9,845	\$11,875
1996	\$4,009	\$0	\$10,926	\$14,935
1997	\$17,500	\$0	\$12,771	\$30,271
1998	\$0	\$0	\$43,264	\$43,264
1999	\$0	\$4,975	\$21,528	\$26,503
2000	\$1,982	\$1,597	\$26,331	\$29,910
2001	\$20,000	\$68,374	\$20,596	\$108,970
2002	\$779	\$7,181	\$15,998	\$23,958
2003	\$0	\$37,216	\$8,110	\$45,326
2004	\$0	\$1,749	\$13,337	\$15,086
2005	\$4,298	\$12,303	\$12,939	\$29,540
2006	\$0	\$0	\$13,374	\$13,374
2007	\$9,785	\$0	\$10,851	\$20,636
2008	\$6,965	\$7,490	\$15,112	\$29,567
2009	\$1,200	\$0	\$10,870	\$12,070
2010	\$0	\$0	\$10,849	\$10,849
<b>Total</b>	<b>\$68,548</b>	<b>\$140,885</b>	<b>\$256,702</b>	<b>\$466,134</b>

**Crop Summary for Kilby Butte Hutterian Brethren In**

Crop	Payments 1995-2010
Wheat Subsidies**	\$171,648
Barley Subsidies**	\$55,862
Livestock Subsidies	\$16,258
Wool Subsidies	\$5,067
Oat Subsidies**	\$2,462
Corn Subsidies**	\$69

**Counties where payments were made from**

County	Subsidy Payments 1995-2010
Unknown county in Montana	\$0
Musselshell County, Montana	\$445,087

---

**Total****\$466,134**

---

**Note:** The information on conservation spending for 2010 is incomplete due to missing data from USDA's Natural Resource Conservation Service. Payment data currently are not included for the Environmental Quality Incentives Program, but will be added once NRCS makes it available.

The information provided for the Wetland Reserve Program (WRP) provides an inaccurate picture of how WRP payments are distributed. USDA's Natural Resource Conservation Service uses title companies as intermediaries to finalize wetlands easements under the Wetlands Reserve Program. As a result, the data provided to us shows large sums of money going to these title companies. In reality, the payments are ultimately distributed to landowners participating in the WRP.

Unfortunately, NRCS has not provided the data to show where these farms and wetlands are located or which farmers or landowners are enrolling in the program, so EWG is unable to allocate these large sums of money to individuals beyond the title companies. Therefore, these companies skew the conservation rankings and payment concentration, which EWG cannot avoid unless and until NRCS makes available the additional farm attribution data. Therefore, we have not included WRP payments in the 2010 data update.

Finally, we have separated data on farm commodity, disaster and conservation payments in order to provide a more accurate picture of top recipients and concentration of payments among the three main categories of USDA programs.

## USDA subsidy information for **Kilby Butte Hutterian Brethren In**

### Payment Breakdown

Subsidy Program	Total Payments 1995-2010
<b>Total USDA - Subsidies</b>	<b>\$466,134</b>
<i>Subtotal, Farming Subsidies</i>	<b>\$256,702</b>
<i>Subtotal, Conservation Programs</i>	<b>\$68,548</b>
<i>Subtotal, Disaster Payments</i>	<b>\$140,885</b>

### Commodity subsidy breakdown

Subsidy Program	Total Payments 1995-2010
<b>Subtotal, Farming Subsidies</b>	<b>\$256,702</b>
<i>Total Direct Payments</i>	<b>\$93,014</b>
Direct Program Payments - 2008 Farm Bill	\$20,874
Direct Payment - Barley	\$13,263
Direct Payment - Corn	\$69
Direct Payment - Oats	\$565
Direct Payment - Wheat	\$58,243
<i>Total Counter Cyclical Payments</i>	<b>\$2,279</b>
Counter Cyclical Payment - Barley	\$2,279
<i>Production Flexibility Contracts</i>	<b>\$87,025</b>
Production Flexibility - Barley	\$14,642
Production Flexibility - Oats	\$655
Production Flexibility - Wheat	\$71,728
<i>Mkt. Loss Asst. - Commodity Crops</i>	<b>\$43,379</b>
Market Loss Assistance - Barley	\$7,431
Market Loss Assistance - Oats	\$335
Market Loss Assistance - Wheat	\$35,613
<i>Deficiency Payments</i>	<b>\$443</b>
Advance Deficiency - Barley	\$1,493
Deficiency - Barley	\$-1,416
Advance Deficiency - Oats	\$132
Deficiency - Oats	\$234
Advance Deficiency - Wheat	\$5,710
Deficiency - Wheat	\$-5,710

<i>Loan Deficiency Payments</i>	<b>\$26,568</b>
Loan Deficiency - Barley	\$18,191
Loan Def. Refund - Barley	\$-21
Loan Deficiency - Oats	\$541
Loan Deficiency - Wheat	\$6,064
Loan Deficiency - Wool	\$1,793
<i>Wool And Mohair Programs</i>	<b>\$3,274</b>
Wool Promotion	\$326
Wool Program	\$2,948
<i>Misc. Farm - Subsidies</i>	<b>\$720</b>
Small Hog Operation	\$720

**Conservation subsidy breakdown**

<b>Subsidy Program</b>	<b>Total Payments 1995-2010</b>
<b>Subtotal, Conservation Programs</b>	<b>\$68,548</b>
<i>Conservation Reserve Program</i>	<b>\$3,958</b>
CRP - Annual Land Rental	\$3,958
<i>Env. Quality Incentive Program</i>	<b>\$60,527</b>
EQIP - Regular	\$42,248
EQIP - Acp	\$18,279
<i>Agricultural Conservation Program</i>	<b>\$2,081</b>
ACP - Regular	\$2,081
<i>Emergency Conservation</i>	<b>\$1,982</b>
Emergency Conservation - Drought	\$1,982


**Disaster subsidy breakdown**

<b>Subsidy Program</b>	<b>Total Payments 1995-2010</b>
<b>Subtotal, Disaster Payments</b>	<b>\$140,885</b>
<i>Misc. Disaster Payments</i>	<b>\$125,347</b>
Crop Disaster - Program	\$119,675
Non-insured Assistance	\$5,672
<i>Livestock Disaster / Emergency</i>	<b>\$11,763</b>
Emergency Livestock Feed Assistance	\$11,763
Livestock Compensation Program	\$3,775

**Note:** The information on conservation spending for 2010 is incomplete due to missing data from USDA's Natural Resource Conservation Service. Payment data currently are not included for the Environmental Quality Incentives Program, but will be added once NRCS makes it available.

The information provided for the Wetland Reserve Program (WRP) provides an inaccurate picture of how WRP payments are distributed. USDA's Natural Resource Conservation Service uses title companies as intermediaries to finalize wetlands easements under the Wetlands Reserve Program. As a result, the data provided to us shows large sums of money going to these title companies. In reality, the payments are ultimately distributed to landowners participating in the WRP.

Unfortunately, NRCS has not provided the data to show where these farms and wetlands are located or which farmers or landowners are enrolling in the program, so EWG is unable to allocate these large sums of money to individuals beyond the title companies. Therefore, these companies skew the conservation rankings and payment concentration.

USDA subsidy information for **Kilby Butte Hutterian Brethren In****Ownership shares for Kilby Butte Hutterian Brethren In**Pick year for ownership information 

USDA county office/Ownership:

Percentage  
Share\*

**Kilby Butte Colony**  
**ownership information from 2008**  
**Musselshell County, Montana**

Members Of Kilby Butte Hutterian**100.00%**

\* According to USDA percentage shares for ownership may not reflect share of subsidy payments. EWG review shows that share information on file with USDA may not always equal 100 percent. Most recent percentage share information is from 2008. Future release of this information was barred by law in the 2008 Farm Bill.

**Note:** The information on conservation spending for 2010 is incomplete due to missing data from USDA's Natural Resource Conservation Service. Payment data currently are not included for the Environmental Quality Incentives Program, but will be added once NRCS makes it available.

The information provided for the Wetland Reserve Program (WRP) provides an inaccurate picture of how WRP payments are distributed. USDA's Natural Resource Conservation Service uses title companies as intermediaries to finalize wetlands easements under the Wetlands Reserve Program. As a result, the data provided to us shows large sums of money going to these title companies. In reality, the payments are ultimately distributed to landowners participating in the WRP.

Unfortunately, NRCS has not provided the data to show where these farms and wetlands are located or which farmers or landowners are enrolling in the program, so EWG is unable to allocate these large sums of money to individuals beyond the title companies. Therefore, these companies skew the conservation rankings and payment concentration, which EWG cannot avoid unless and until NRCS makes available the additional farm attribution data. Therefore, we have not included WRP payments in the 2010 data update.

Finally, we have separated data on farm commodity, disaster and conservation payments in order to provide a more accurate picture of top recipients and concentration of payments among the three main categories of USDA programs.

USDA subsidy information for **Members Of Kilby Butte Hutterian**

## Recipient's ownership share(s)

Recipient:	County	Percentage Share*
	Musselshell County, Montana	100.0 %
<u>Kilby Butte Colony</u>	Musselshell County, Montana	100.0 %
	Musselshell County, Montana	100.0 %

\* Most recent percentage share information is from 2008. According to USDA percentage shares for ownership may not reflect share of subsidy payments. EWG review shows that share information on file with USDA may not equal 100 percent.

**Note:** The information on conservation spending for 2010 is incomplete due to missing data from USDA's Natural Resource Conservation Service. Payment data currently are not included for the Environmental Quality Incentives Program, but will be added once NRCS makes it available.

The information provided for the Wetland Reserve Program (WRP) provides an inaccurate picture of how WRP payments are distributed. USDA's Natural Resource Conservation Service uses title companies as intermediaries to finalize wetlands easements under the Wetlands Reserve Program. As a result, the data provided to us shows large sums of money going to these title companies. In reality, the payments are ultimately distributed to landowners participating in the WRP.

Unfortunately, NRCS has not provided the data to show where these farms and wetlands are located or which farmers or landowners are enrolling in the program, so EWG is unable to allocate these large sums of money to individuals beyond the title companies. Therefore, these companies skew the conservation rankings and payment concentration, which EWG cannot avoid unless and until NRCS makes available the additional farm attribution data. Therefore, we have not included WRP payments in the 2010 data update.

Finally, we have separated data on farm commodity, disaster and conservation payments in order to provide a more accurate picture of top recipients and concentration of payments among the three main categories of USDA programs.

## EWG Farm Subsidy Database

### Corporate Subsidy Recipients 1 to 1 of 1 in Montana

Business Name: **KING RANCH COLONY**

Rank	Name	Location	Subsidy Total 1995-2010
1	<a href="#">King Ranch Colony</a>	Lewistown, MT 59457	\$ 786,899.00

**Note:** The information on conservation spending for 2010 is incomplete due to missing data from USDA's Natural Resource Conservation Service. Payment data currently are not included for the Environmental Quality Incentives Program, but will be added once NRCS makes it available.

The information provided for the Wetland Reserve Program (WRP) provides an inaccurate picture of how WRP payments are distributed. USDA's Natural Resource Conservation Service uses title companies as intermediaries to finalize wetlands easements under the Wetlands Reserve Program. As a result, the data provided to us shows large sums of money going to these title companies. In reality, the payments are ultimately distributed to landowners participating in the WRP.

Unfortunately, NRCS has not provided the data to show where these farms and wetlands are located or which farmers or landowners are enrolling in the program, so EWG is unable to allocate these large sums of money to individuals beyond the title companies. Therefore, these companies skew the conservation rankings and payment concentration, which EWG cannot avoid unless and until NRCS makes available the additional farm attribution data. Therefore, we have not included WRP payments in the 2010 data update.

Finally, we have separated data on farm commodity, disaster and conservation payments in order to provide a more accurate picture of top recipients and concentration of payments among the three main categories of USDA programs.

USDA subsidy information for **King Ranch Colony****Addresses on file with USDA for King Ranch Colony**

USDA county office from which subsidies were paid:	Subsidy Payments 1995-2010	Most recent address on file in USDA county office
Fergus County, Montana	\$786,899	King Ranch Colony Lewistown, MT 59457
<b>Total</b>	<b>\$786,899</b>	

**Note:** The information on conservation spending for 2010 is incomplete due to missing data from USDA's Natural Resource Conservation Service. Payment data currently are not included for the Environmental Quality Incentives Program, but will be added once NRCS makes it available.

The information provided for the Wetland Reserve Program (WRP) provides an inaccurate picture of how WRP payments are distributed. USDA's Natural Resource Conservation Service uses title companies as intermediaries to finalize wetlands easements under the Wetlands Reserve Program. As a result, the data provided to us shows large sums of money going to these title companies. In reality, the payments are ultimately distributed to landowners participating in the WRP.

Unfortunately, NRCS has not provided the data to show where these farms and wetlands are located or which farmers or landowners are enrolling in the program, so EWG is unable to allocate these large sums of money to individuals beyond the title companies. Therefore, these companies skew the conservation rankings and payment concentration, which EWG cannot avoid unless and until NRCS makes available the additional farm attribution data. Therefore, we have not included WRP payments in the 2010 data update.

Finally, we have separated data on farm commodity, disaster and conservation payments in order to provide a more accurate picture of top recipients and concentration of payments among the three main categories of USDA programs.

**King Ranch Colony received payments totaling \$786,899 from 1995 through 2010**

Year	Conservation Subsidies	Disaster Subsidies	Commodity Subsidies	Total USDA Subsidies 1995-2010
1995	\$0	\$1,894	\$19,134	\$21,028
1996	\$0	\$0	\$20,399	\$20,399
1997	\$0	\$150	\$28,010	\$28,160
1998	\$0	\$0	\$81,951	\$81,951
1999	\$0	\$15,727	\$84,545	\$100,272
2000	\$0	\$14,243	\$97,109	\$111,352
2001	\$0	\$11,358	\$55,217	\$66,575
2002	\$0	\$6,732	\$32,981	\$39,713
2003	\$0	\$12,228	\$46,384	\$58,612
2004	\$0	\$0	\$37,145	\$37,145
2005	\$0	\$16,625	\$53,990	\$70,615
2006	\$0	\$0	\$32,595	\$32,595
2007	\$0	\$1,964	\$21,615	\$23,579
2008	\$0	\$339	\$27,166	\$27,505
2009	\$0	\$0	\$39,621	\$39,621
2010	\$0	\$0	\$27,779	\$27,779
<b>Total</b>	<b>\$0</b>	<b>\$81,260</b>	<b>\$705,639</b>	<b>\$786,899</b>

**Crop Summary for King Ranch Colony**

Crop	Payments 1995-2010
Wheat Subsidies**	\$371,055
Barley Subsidies**	\$216,295
Dairy Program Subsidies	\$57,683
Livestock Subsidies	\$18,732
Wool Subsidies	\$2,396
Oat Subsidies**	\$402

Note: The information on conservation spending for 2010 is incomplete due to missing data from USDA's Natural Resource Conservation Service. Payment data currently are not included for the Environmental Quality Incentives Program, but will be added once NRCS makes it available.

The information provided for the Wetland Reserve Program (WRP) provides an inaccurate picture of how WRP payments are distributed. USDA's Natural Resource Conservation Service uses title companies as intermediaries to finalize wetlands easements under the Wetlands Reserve Program. As a result, the data provided to us shows large

USDA subsidy information for **King Ranch Colony****Payment Breakdown**

Subsidy Program	Total Payments 1995-2010
<b>Total USDA - Subsidies</b>	<b>\$786,899</b>
<i>Subtotal, Farming Subsidies</i>	<b>\$705,639</b>
<i>Subtotal, Disaster Payments</i>	<b>\$81,260</b>

**Commodity subsidy breakdown**

Subsidy Program	Total Payments 1995-2010
<b>Subtotal, Farming Subsidies</b>	<b>\$705,639</b>
<i>Total Direct Payments</i>	<b>\$222,970</b>
Direct Program Payments - 2008 Farm Bill	\$53,274
Direct Payment - Barley	\$51,191
Direct Payment - Oats	\$232
Direct Payment - Wheat	\$118,273
<i>Total Counter Cyclical Payments</i>	<b>\$9,897</b>
Counter Cyclical Payment - Barley	\$9,897
<i>Production Flexibility Contracts</i>	<b>\$189,124</b>
Production Flexibility - Barley	\$73,964
Production Flexibility - Oats	\$113
Production Flexibility - Wheat	\$115,047
<i>Mkt. Loss Asst. - Commodity Crops</i>	<b>\$94,100</b>
Market Loss Assistance - Barley	\$37,057
Market Loss Assistance - Oats	\$57
Market Loss Assistance - Wheat	\$56,986
<i>Market Loss Assistance - Non-commodity</i>	<b>\$9,979</b>
Market Loss Assistance - Dairy	\$9,979
<i>Deficiency Payments</i>	<b>\$408</b>
Advance Deficiency - Barley	\$8,102
Deficiency - Barley	\$-7,694
Advance Deficiency - Wheat	\$9,304
Deficiency - Wheat	\$-9,304
<i>Loan Deficiency Payments</i>	<b>\$124,528</b>
Loan Deficiency - Barley	\$43,778

Loan Deficiency - Wheat	\$80,749
<b>Total Dairy Program</b>	<b>\$47,705</b>
Milk Income Loss Contract Payment	\$38,069
Milk Income Loss Transitional Payment	\$6,624
Dairy Economic Loss Assistance Program	\$3,011
<b>Wool And Mohair Programs</b>	<b>\$2,396</b>
Wool Promotion	\$222
Wool Program	\$2,174
<b>Misc. Farm - Subsidies</b>	<b>\$4,534</b>
Interest Penalty Payments	\$214
Small Hog Operation	\$4,320

**Disaster subsidy breakdown**

Subsidy Program	Total Payments 1995-2010
<b>Subtotal, Disaster Payments</b>	<b>\$81,260</b>
<i>Misc. Disaster Payments</i>	<b>\$66,848</b>
Crop Disaster - Program	\$64,804
Natural Disaster - 1995	\$1,894
Non-insured Assistance	\$150
<b>Livestock Disaster / Emergency</b>	<b>\$5,716</b>
Emergency Livestock Feed Assistance	\$5,716
Livestock Compensation Program	\$8,696

**Note:** The information on conservation spending for 2010 is incomplete due to missing data from USDA's Natural Resource Conservation Service. Payment data currently are not included for the Environmental Quality Incentives Program, but will be added once NRCS makes it available.

The information provided for the Wetland Reserve Program (WRP) provides an inaccurate picture of how WRP payments are distributed. USDA's Natural Resource Conservation Service uses title companies as intermediaries to finalize wetlands easements under the Wetlands Reserve Program. As a result, the data provided to us shows large sums of money going to these title companies. In reality, the payments are ultimately distributed to landowners participating in the WRP.

Unfortunately, NRCS has not provided the data to show where these farms and wetlands are located or which farmers or landowners are enrolling in the program, so EWG is unable to allocate these large sums of money to individuals beyond the title companies. Therefore, these companies skew the conservation rankings and payment concentration, which EWG cannot avoid unless and until NRCS makes available the additional farm attribution data. Therefore, we have not included WRP payments in the 2010 data update.

Finally, we have separated data on farm commodity, disaster and conservation payments in order to provide a more accurate picture of top recipients and concentration of payments among the three main categories of USDA programs.

## USDA subsidy information for **King Ranch Colony**

### Ownership shares for King Ranch Colony

Pick year for ownership information

USDA county office/Ownership:

Percentage  
Share\*

**King Ranch Colony**  
ownership information from 2008  
Fergus County, Montana

Members Of King Ranch Colony

**100.00%**

\* According to USDA percentage shares for ownership may not reflect share of subsidy payments. EWG review shows that share information on file with USDA may not always equal 100 percent. Most recent percentage share information is from 2008. Future release of this information was barred by law in the 2008 Farm Bill.

**Note:** The information on conservation spending for 2010 is incomplete due to missing data from USDA's Natural Resource Conservation Service. Payment data currently are not included for the Environmental Quality Incentives Program, but will be added once NRCS makes it available.

The information provided for the Wetland Reserve Program (WRP) provides an inaccurate picture of how WRP payments are distributed. USDA's Natural Resource Conservation Service uses title companies as intermediaries to finalize wetlands easements under the Wetlands Reserve Program. As a result, the data provided to us shows large sums of money going to these title companies. In reality, the payments are ultimately distributed to landowners participating in the WRP.

Unfortunately, NRCS has not provided the data to show where these farms and wetlands are located or which farmers or landowners are enrolling in the program, so EWG is unable to allocate these large sums of money to individuals beyond the title companies. Therefore, these companies skew the conservation rankings and payment concentration, which EWG cannot avoid unless and until NRCS makes available the additional farm attribution data. Therefore, we have not included WRP payments in the 2010 data update.

Finally, we have separated data on farm commodity, disaster and conservation payments in order to provide a more accurate picture of top recipients and concentration of payments among the three main categories of USDA programs.

USDA subsidy information for **Members Of King Ranch Colony****Recipient's ownership share(s)**

Recipient:	County	Percentage Share*
	Fergus County, Montana	100.0 %
<u>King Ranch Colony</u>	Fergus County, Montana	100.0 %
	Fergus County, Montana	100.0 %

\* Most recent percentage share information is from 2008. According to USDA percentage shares for ownership may not reflect share of subsidy payments. EWG review shows that share information on file with USDA may not equal 100 percent.

**Note:** The information on conservation spending for 2010 is incomplete due to missing data from USDA's Natural Resource Conservation Service. Payment data currently are not included for the Environmental Quality Incentives Program, but will be added once NRCS makes it available.

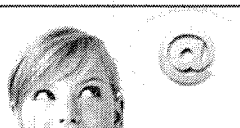
The information provided for the Wetland Reserve Program (WRP) provides an inaccurate picture of how WRP payments are distributed. USDA's Natural Resource Conservation Service uses title companies as intermediaries to finalize wetlands easements under the Wetlands Reserve Program. As a result, the data provided to us shows large sums of money going to these title companies. In reality, the payments are ultimately distributed to landowners participating in the WRP.

Unfortunately, NRCS has not provided the data to show where these farms and wetlands are located or which farmers or landowners are enrolling in the program, so EWG is unable to allocate these large sums of money to individuals beyond the title companies. Therefore, these companies skew the conservation rankings and payment concentration, which EWG cannot avoid unless and until NRCS makes available the additional farm attribution data. Therefore, we have not included WRP payments in the 2010 data update.

Finally, we have separated data on farm commodity, disaster and conservation payments in order to provide a more accurate picture of top recipients and concentration of payments among the three main categories of USDA programs

**MELISSA DATA**

1-800-MELISSA

[Products](#)[Solutions](#)[Downloads & Trials](#)[Sign In](#)[Cart](#)[Newsletters](#)[Search](#)[Support](#)[Resources](#)[Lookups](#)[Contact Us](#)[Free Lookups](#)[Home](#) > [Lookups](#) > Nonprofit Organization Lookup[Help](#)

## Have you tried our **full-service** email marketing campaigns yet?

Enter a 5-digit ZIP Code,  
organization name or 9-digit Tax ID

Use this Lookup to:

- Find information on over 1.4 million registered nonprofit organizations in the United States
- Get organization name, assets, income, and IRS subsection
- Select organization for contact name and address, type of foundation and organization
- Get deductibility status, classification, Form 990, and more

### **PETER HOFER ETAL PTR KING COLONY RANCH**

**PO BOX 858****Address** LEWISTOWN, MT 59457-0858[MapG](#) [MapY](#) [MapV](#)**IRS Subsection** 501(d) - A religious and apostolic association.**Type of Organization** Partnership**Deductibility** Contributions are NOT deductible**Tax I.D. Number** 816010778**Exempt Since** 10-1948**Form 990 Requirement** Not required to file 990**Activity #1** Church, synagogue, etc

Share with others information about this Nonprofit - like the web site, e-mail address, how to donate or any corrections to the data shown.

### Messages

[How Can We Improve this Lookup?](#) | [Send to a Friend](#) | [Lookups Forum](#) | [Terms of Use](#)



## EWG Farm Subsidy Database

Corporate Subsidy Recipients 1 to 1 of 1 in Montana

Business Name: **KINGSBURY COLONY**

Rank	Name	Location	Subsidy Total 1995-2010
1	<a href="#">Kingsbury Colony</a>	Valier, MT 59486	\$ 1,894,679.19

**Note:** The information on conservation spending for 2010 is incomplete due to missing data from USDA's Natural Resource Conservation Service. Payment data currently are not included for the Environmental Quality Incentives Program, but will be added once NRCS makes it available.

The information provided for the Wetland Reserve Program (WRP) provides an inaccurate picture of how WRP payments are distributed. USDA's Natural Resource Conservation Service uses title companies as intermediaries to finalize wetlands easements under the Wetlands Reserve Program. As a result, the data provided to us shows large sums of money going to these title companies. In reality, the payments are ultimately distributed to landowners participating in the WRP.

Unfortunately, NRCS has not provided the data to show where these farms and wetlands are located or which farmers or landowners are enrolling in the program, so EWG is unable to allocate these large sums of money to individuals beyond the title companies. Therefore, these companies skew the conservation rankings and payment concentration, which EWG cannot avoid unless and until NRCS makes available the additional farm attribution data. Therefore, we have not included WRP payments in the 2010 data update.

Finally, we have separated data on farm commodity, disaster and conservation payments in order to provide a more accurate picture of top recipients and concentration of payments among the three main categories of USDA programs.

USDA subsidy information for **Kingsbury Colony****Addresses on file with USDA for Kingsbury Colony**

USDA county office from which subsidies were paid:	Subsidy Payments 1995-2010	Most recent address on file in USDA county office
Pondera County, Montana	\$1,853,986	Kingsbury Colony Valier, MT 59486
<b>Total</b>	<b>\$1,894,679</b>	

**Note:** The information on conservation spending for 2010 is incomplete due to missing data from USDA's Natural Resource Conservation Service. Payment data currently are not included for the Environmental Quality Incentives Program, but will be added once NRCS makes it available.

The information provided for the Wetland Reserve Program (WRP) provides an inaccurate picture of how WRP payments are distributed. USDA's Natural Resource Conservation Service uses title companies as intermediaries to finalize wetlands easements under the Wetlands Reserve Program. As a result, the data provided to us shows large sums of money going to these title companies. In reality, the payments are ultimately distributed to landowners participating in the WRP.

Unfortunately, NRCS has not provided the data to show where these farms and wetlands are located or which farmers or landowners are enrolling in the program, so EWG is unable to allocate these large sums of money to individuals beyond the title companies. Therefore, these companies skew the conservation rankings and payment concentration, which EWG cannot avoid unless and until NRCS makes available the additional farm attribution data. Therefore, we have not included WRP payments in the 2010 data update.

Finally, we have separated data on farm commodity, disaster and conservation payments in order to provide a more accurate picture of top recipients and concentration of payments among the three main categories of USDA programs.

**Kingsbury Colony received payments totaling \$1,894,679 from 1995 through 2010**

Year	Conservation Subsidies	Disaster Subsidies	Commodity Subsidies	Total USDA Subsidies 1995-2010
1995	\$18,584	\$0	\$50,000	\$68,584
1996	\$18,584	\$0	\$40,000	\$58,584
1997	\$18,584	\$0	\$27,316	\$45,900
1998	\$12,941	\$0	\$134,888	\$147,829
1999	\$9,933	\$0	\$160,440	\$170,373
2000	\$12,221	\$0	\$175,669	\$187,890
2001	\$-3,266	\$0	\$113,868	\$110,602
2002	\$4,419	\$20,201	\$69,587	\$94,207
2003	\$4,613	\$61,531	\$80,354	\$146,498
2004	\$4,871	\$0	\$152,097	\$156,968
2005	\$4,613	\$23,834	\$96,630	\$125,077
2006	\$4,871	\$0	\$94,939	\$99,810
2007	\$4,775	\$0	\$46,155	\$50,930
2008	\$44,916	\$65,132	\$40,000	\$150,048
2009	\$89,600	\$0	\$78,735	\$168,335
2010	\$4,140	\$0	\$108,904	\$113,044
<b>Total</b>	<b>\$254,399</b>	<b>\$170,698</b>	<b>\$1,469,582</b>	<b>\$1,894,679</b>

**Crop Summary for Kingsbury Colony**

Crop	Payments 1995-2010
Wheat Subsidies**	\$524,576
Barley Subsidies**	\$492,200
Dairy Program Subsidies	\$166,624
Canola Subsidies**	\$77,152
Dry Pea Subsidies	\$70,618
Livestock Subsidies	\$24,577
Corn Subsidies**	\$1,197

**Note:** The information on conservation spending for 2010 is incomplete due to missing data from USDA's Natural Resource Conservation Service. Payment data currently are not included for the Environmental Quality Incentives Program, but will be added once NRCS makes it available.

## USDA subsidy information for **Kingsbury Colony**

### Payment Breakdown

Subsidy Program	Total Payments 1995-2010
<b>Total USDA - Subsidies</b>	<b>\$1,894,679</b>
<i>Subtotal, Farming Subsidies</i>	<b>\$1,469,582</b>
<i>Subtotal, Conservation Programs</i>	<b>\$254,399</b>
<i>Subtotal, Disaster Payments</i>	<b>\$170,698</b>

### Commodity subsidy breakdown

Subsidy Program	Total Payments 1995-2010
<b>Subtotal, Farming Subsidies</b>	<b>\$1,469,582</b>
<i>Total Direct Payments</i>	<b>\$244,431</b>
Direct Payment - Barley	\$86,077
Direct Payment - Wheat	\$158,354
<i>Total Counter Cyclical Payments</i>	<b>\$17,479</b>
Counter Cyclical Payment - Barley	\$17,479
Counter Cyclical Payment - Wheat	\$0
<i>Average Crop Revenue Election Program (ACRE)</i>	<b>\$137,044</b>
ACRE - Direct Payments	\$64,047
ACRE - Revenue Support	\$72,997
<i>Production Flexibility Contracts</i>	<b>\$304,835</b>
Production Flexibility - Barley	\$83,911
Production Flexibility - Wheat	\$220,924
<i>Mkt. Loss Asst. - Commodity Crops</i>	<b>\$139,888</b>
Market Loss Assistance - Barley	\$21,379
Market Loss Assistance - Wheat	\$118,509
<i>Market Loss Assistance - Non-commodity</i>	<b>\$24,122</b>
Market Loss Assistance - Dairy	\$24,122
<i>Oilseed Program</i>	<b>\$16,887</b>
Oilseed Program - Canola	\$16,887
<i>Deficiency Payments</i>	<b>\$3,837</b>
Advance Deficiency - Barley	\$22,210
Deficiency - Barley	\$-22,210
Advance Deficiency - Wheat	\$27,790

Deficiency - Wheat	\$-23,953
<i>Loan Deficiency Payments</i>	<b>\$321,172</b>
Loan Deficiency - Barley	\$203,466
Loan Deficiency - Canola Oil	\$60,265
Loan Deficiency - Corn	\$1,197
Loan Deficiency - Wheat	\$14,134
Loan Deficiency - Dry Peas	\$42,112
<i>Total Commodity Certificates</i>	<b>\$67,251</b>
Commodity Certificates - Barley	\$32,657
Commodity Certificates - Wheat	\$7,948
Commodity Certificates - Dry Peas	\$26,646
<i>Marketing Loan Gains</i>	<b>\$49,092</b>
Market Gains Farm - Barley	\$47,231
Market Gains Farm - Dry Peas	\$1,861
<i>Total Dairy Program</i>	<b>\$142,503</b>
Milk Income Loss Contract Payment	\$105,189
Milk Income Loss Transitional Payment	\$24,667
Milk Marketing Fees	\$679
Dairy Economic Loss Assistance Program	\$11,969
<i>Misc. Farm - Subsidies</i>	<b>\$171</b>
Interest Penalty Payments	\$171
<i>Hard Winter Wheat Incentive Program</i>	<b>\$870</b>
Hard Winter Wheat Incentive Payment	\$870

**Conservation subsidy breakdown**

Subsidy Program	Total Payments 1995-2010
<b>Subtotal, Conservation Programs</b>	<b>\$254,399</b>
<i>Conservation Reserve Program</i>	<b>\$115,363</b>
CRP - Annual Land Rental	\$118,723
CRP - Haying / Grazing	\$-3,360
<i>Env. Quality Incentive Program</i>	<b>\$126,091</b>
EQIP - Regular	\$126,091
<i>Emergency Conservation</i>	<b>\$12,945</b>
Emergency Conservation - Drought	\$12,945

**Disaster subsidy breakdown**

Subsidy Program	Total Payments 1995-2010
<b>Subtotal, Disaster Payments</b>	<b>\$170,698</b>
<i>Misc. Disaster Payments</i>	<b>\$146,121</b>
Crop Disaster - Program	\$146,121
Livestock Compensation Program	\$24,577

USDA subsidy information for **Kingsbury Colony****Ownership shares for Kingsbury Colony**

Pick year for ownership information

**USDA county office/Ownership:****Percentage  
Share\***

**Kingsbury Colony**  
**ownership information from 2010**  
**Pondera County, Montana**

<a href="#">Andy M Kleinsasser</a>	N/A*
<a href="#">Samuel E Kleinsasser</a>	N/A*
<a href="#">Linda D Wurtz</a>	N/A*
<a href="#">Thomas T Wurtz</a>	N/A*
<a href="#">Helen D Waldner</a>	N/A*
<a href="#">Rachel M Kleinsasser</a>	N/A*
<a href="#">Laura E Wurtz</a>	N/A*
<a href="#">Michael M Kleinsasser</a>	N/A*
<a href="#">Joseph P Waldner</a>	N/A*
<a href="#">Joseph J Wurtz Jr</a>	N/A*
<a href="#">Michael M Kleinsasser</a>	N/A*
<a href="#">Judith M Wurtz</a>	N/A*
<a href="#">Joseph J Waldner</a>	N/A*
<a href="#">Rebecca M Wurtz</a>	N/A*
<a href="#">Esther M Wurtz</a>	N/A*
<a href="#">Martha J Waldner</a>	N/A*
<a href="#">Elizabeth J Kleinsasser</a>	N/A*
<a href="#">Thomas J Wurtz</a>	N/A*
<a href="#">Anna M Waldner</a>	N/A*
<a href="#">David J Waldner</a>	N/A*
<a href="#">Edward J Wurtz</a>	N/A*
<a href="#">Katie M Kleinsasser</a>	N/A*
<a href="#">Issak J Wurtz</a>	N/A*
<a href="#">Jacob J Kleinsasser</a>	N/A*
<a href="#">Katherine J Waldner</a>	N/A*
<a href="#">Anna J Kleinsasser</a>	N/A*


<a href="#"><u>Anna M Kleinsasser</u></a>	N/A*
<a href="#"><u>Michael J Kleinsasser</u></a>	N/A*
<a href="#"><u>Michael S Kleinsasser</u></a>	N/A*
<a href="#"><u>John J R Kleinsasser</u></a>	N/A*
<a href="#"><u>Katie J R Kleinsasser</u></a>	N/A*
<a href="#"><u>Helen J Kleinsasser</u></a>	N/A*
<a href="#"><u>Dorothy S Wurtz</u></a>	N/A*
<a href="#"><u>Debra J R Kleinsasser</u></a>	N/A*
<a href="#"><u>Katie J Waldner</u></a>	N/A*
<a href="#"><u>Arnie D Kleinsasser</u></a>	N/A*
<a href="#"><u>Donnie J Kleinsasser</u></a>	N/A*
<a href="#"><u>Tabby D Waldner</u></a>	N/A*
<a href="#"><u>Gary J Waldner</u></a>	N/A*
<a href="#"><u>Dianna M Kleinsasser</u></a>	N/A*
<a href="#"><u>Ida M Kleinsasser</u></a>	N/A*
<a href="#"><u>Lydia M Kleinsasser</u></a>	N/A*
<a href="#"><u>Joanne E Wurtz</u></a>	N/A*
<a href="#"><u>Rhoda D Wurtz</u></a>	N/A*
<a href="#"><u>Rebecca J Kleinsasser</u></a>	N/A*
<a href="#"><u>Lawrence J Wurtz</u></a>	N/A*
<a href="#"><u>Leonard M Kleinsasser</u></a>	N/A*
<a href="#"><u>Gideon D Waldner</u></a>	N/A*
<a href="#"><u>Amanda J Wurtz</u></a>	N/A*
<a href="#"><u>Brenda M Kleinsasser</u></a>	N/A*
<a href="#"><u>Rachel J Kleinsasser</u></a>	N/A*
<a href="#"><u>Delilah J Kleinsasser</u></a>	N/A*
<a href="#"><u>Theodore M Kleinsasser</u></a>	N/A*
<a href="#"><u>Sara E Kleinsasser</u></a>	N/A*
<a href="#"><u>Caleb L Wurtz</u></a>	N/A*
<a href="#"><u>Leah A Kleinsasser</u></a>	N/A*
<a href="#"><u>Rebecca A Kleinsasser</u></a>	N/A*
<a href="#"><u>Kalea L Wurtz</u></a>	N/A*
<a href="#"><u>Kaylene L Wurtz</u></a>	N/A*
<a href="#"><u>Evan S Kleinsasser</u></a>	N/A*

\* According to USDA percentage shares for ownership may not reflect share of subsidy payments. EWG review shows that share information on file with USDA may not always equal 100 percent. Most recent percentage share information is from 2008. Future release of this information was barred by law in the 2008 Farm Bill.

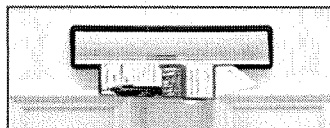
**Note:** The information on conservation spending for 2010 is incomplete due to missing data from USDA's Natural Resource Conservation Service. Payment data currently are not included for the Environmental Quality Incentives Program, but will be added once NRCS makes it available.

The information provided for the Wetland Reserve Program (WRP) provides an inaccurate picture of how WRP payments are distributed. USDA's Natural Resource Conservation Service uses title companies as intermediaries to finalize wetlands easements under the Wetlands Reserve Program. As a result, the data provided to us shows large

MT59601-962700000332	20011211500000000010100000020101200020		
12000000000000000000000000000000 X21			
810482646KEYSTONE CONSERVATION INC			
% THOMAS F SKEELE PRES	PO BOX 6733		BOZEMAN
MT59771-673300000331	19931011535000000010100000020100934010		
09000000000574580000000132110 0000000132110 C300			
300658554KIAH FOUNDATION			
% BRIDGET BARTSCH	900 N MONTANA AVE STE A-1		HELENA
MT59601-384500000331	201105115000000000101000000 00020 12		
H123			
810467707KIDS AFTER SCHOOL ENRICHMENT PROGRAM			
919 BROADWATER SQ	BILLINGS		MT59101-163400000331
199103115574000000101000000 02010 06			
P33Z			
261867764KIDS CLUB CHILD CARE CENTER INC			
% HEIDI CLAUNCH	439 A ST		
COLUMBUS	MT59019-760000000332		
20090111600000000010100000020101224010 1200000000149050000000174287			
0000000173080 P33			
810372041KIDS KORNER INC			
PO BOX 672	CHINOOK		MT59523-067200000312
00000011100000000010100000020100633010 0600000000513070000000076511			
0000000076511 P33Z			
810512370KIDSPORTS			
% DANIEL D JOHNS	PO BOX 1205		
KALISPELL	MT59903-120500000331		
19980711529700000010100000020091264010 1200000017565330000000108285			
0000000106905 N32Z			
208409012KILA SMITH LAKE COMMUNITYDEVELOPMENT COALITION			
% SCOTT LAMPshire	PO BOX 105		KILA
MT59920-010500000331	20100911500000000010100000020101200020		
12000000000000000000000000000000 C30			
202179207KILKENNY CORP			
1235 34TH ST	MISSOULA		MT59801-851600000331
20050911500000000010120091220100964010 0900000045685650000000165679			
0000000165679 L22			
743163021KINGDOM CAMP INC			
% TOM PRICE	1515 S SHILOH RD		
BILLINGS	MT59106-330300000337		
20080511500000000010120091220091223010 1200000000197140000000025466			
0000000025466 X200			
134284037KINGDOM OF GOD MINISTRIES INC			
% WILLIAM M BLIESE	38 SWIFTWATER DR		BOZEMAN
MT59715-876100000337	20060511600000000010120081220101200020		
12000000000000000000000000000000 X20			
204662272KINGDOM POWER GLORY INTERNATIONAL			
% STEVE WHITE	PO BOX 10306		
KALISPELL	MT59904-330600000337		200808115000000000101201012
00010 12	X21		
237356998KINGS CHRISTIAN CHURCH			
9830 VALLEY GROVE DR	LOLO		MT59847-861600000337
197403110001000000101000000 00060 12			
810400440KINGSBURY COLONY INC			
600 KINGSBURY RD	VALIER		MT59486-000000004031
201010200000000000101000000 00000 12			
X99			

**MELISSA DATA**[Sign In](#) | [Cart](#) | [Newsletters](#) | [Search](#) 

1-800-MELISSA

[Products](#)[Solutions](#)[Downloads & Trials](#)[Support](#)[Resources](#)[Lookups](#)[Contact Us](#)[Free Lookups](#)[Home](#) > [Lookups](#) > Nonprofit Organization Lookup[Help](#)

40% of the success of a direct mail campaign is dependent  
on 1 thing - having an accurate, effective mailing list.

[select a list now](#)

Enter a 5-digit ZIP Code,  
organization name or 9-digit Tax ID

Use this LookUp to:

- Find information on over 1.4 million registered nonprofit organizations in the United States
- Get organization name, assets, income, and IRS subsection
- Select organization for contact name and address, type of foundation and organization
- Get deductibility status, classification, Form 990, and more

**KINGSBURY COLONY INC**

Address **600 KINGSBURY RD**  
**VALIER, MT 59486-0000**  
[MapG](#) [MapY](#) [MapV](#)

IRS Subsection **501(d) - A religious and apostolic association.**

Type of Organization **Corporation**

Deductibility **Contributions are NOT deductible**

Tax I.D. Number **810400440**

Exempt Since **10-2010**

Form 990 Requirement **Not required to file 990**

Classification **Religion Related, Spiritual Development N.E.C.**

Share with others information about this Nonprofit - like the web site, e-mail address, how to donate or any corrections to the data shown.

**Messages**

[How Can We Improve this Lookup?](#) | [Send to a Friend](#) | [Lookups Forum](#) | [Terms of Use](#)



## EWG Farm Subsidy Database

### Corporate Subsidy Recipients 1 to 1 of 1 in Montana

Business Name: **LORING**

Rank	Name	Location	Subsidy Total 1995-2010
1	<u>Loring Hutterian Brethren</u>	Loring, MT 59537	\$ 1,585,845.53

**Note:** The information on conservation spending for 2010 is incomplete due to missing data from USDA's Natural Resource Conservation Service. Payment data currently are not included for the Environmental Quality Incentives Program, but will be added once NRCS makes it available.

The information provided for the Wetland Reserve Program (WRP) provides an inaccurate picture of how WRP payments are distributed. USDA's Natural Resource Conservation Service uses title companies as intermediaries to finalize wetlands easements under the Wetlands Reserve Program. As a result, the data provided to us shows large sums of money going to these title companies. In reality, the payments are ultimately distributed to landowners participating in the WRP.

Unfortunately, NRCS has not provided the data to show where these farms and wetlands are located or which farmers or landowners are enrolling in the program, so EWG is unable to allocate these large sums of money to individuals beyond the title companies. Therefore, these companies skew the conservation rankings and payment concentration, which EWG cannot avoid unless and until NRCS makes available the additional farm attribution data. Therefore, we have not included WRP payments in the 2010 data update.

Finally, we have separated data on farm commodity, disaster and conservation payments in order to provide a more accurate picture of top recipients and concentration of payments among the three main categories of USDA programs.



### USDA subsidy information for **Loring Hutterian Brethren**

#### Addresses on file with USDA for Loring Hutterian Brethren

USDA county office from which subsidies were paid:	Subsidy Payments 1995-2010	Most recent address on file in USDA county office
Phillips County, Montana	\$1,585,846	Loring Hutterian Brethren Loring, MT 59537
<b>Total</b>	<b>\$1,585,846</b>	

**Note:** The information on conservation spending for 2010 is incomplete due to missing data from USDA's Natural Resource Conservation Service. Payment data currently are not included for the Environmental Quality Incentives Program, but will be added once NRCS makes it available.

The information provided for the Wetland Reserve Program (WRP) provides an inaccurate picture of how WRP payments are distributed. USDA's Natural Resource Conservation Service uses title companies as intermediaries to finalize wetlands easements under the Wetlands Reserve Program. As a result, the data provided to us shows large sums of money going to these title companies. In reality, the payments are ultimately distributed to landowners participating in the WRP.

Unfortunately, NRCS has not provided the data to show where these farms and wetlands are located or which farmers or landowners are enrolling in the program, so EWG is unable to allocate these large sums of money to individuals beyond the title companies. Therefore, these companies skew the conservation rankings and payment concentration, which EWG cannot avoid unless and until NRCS makes available the additional farm attribution data. Therefore, we have not included WRP payments in the 2010 data update.

Finally, we have separated data on farm commodity, disaster and conservation payments in order to provide a more accurate picture of top recipients and concentration of payments among the three main categories of USDA programs.

### Loring Hutterian Brethren received payments totaling \$1,585,846 from 1995 through 2010

Year	Conservation Subsidies	Disaster Subsidies	Commodity Subsidies	Total USDA Subsidies 1995-2010
1995	\$47,176	\$0	\$31,131	\$78,307
1996	\$47,176	\$0	\$29,177	\$76,353
1997	\$47,176	\$0	\$69,308	\$116,484
1998	\$8,624	\$0	\$143,700	\$152,324
1999	\$8,624	\$0	\$176,388	\$185,012
2000	\$8,624	\$0	\$177,202	\$185,826
2001	\$7,294	\$330	\$90,677	\$98,301
2002	\$8,624	\$1,835	\$39,934	\$50,393
2003	\$8,624	\$13,028	\$64,403	\$86,055
2004	\$8,624	\$0	\$97,854	\$106,478
2005	\$8,624	\$58,542	\$49,157	\$116,323
2006	\$8,624	\$0	\$62,108	\$70,732
2007	\$8,624	\$0	\$40,000	\$48,624
2008	\$8,522	\$56,058	\$40,000	\$104,580
2009	\$8,520	\$0	\$40,014	\$48,534
2010	\$8,520	\$0	\$53,000	\$61,520
<b>Total</b>	<b>\$252,000</b>	<b>\$129,793</b>	<b>\$1,204,053</b>	<b>\$1,585,846</b>

### Crop Summary for Loring Hutterian Brethren

Crop	Payments 1995-2010
Wheat Subsidies**	\$804,171
Barley Subsidies**	\$293,496
Dry Pea Subsidies	\$7,606
Livestock Subsidies	\$6,158
Oat Subsidies**	\$713

**Note:** The information on conservation spending for 2010 is incomplete due to missing data from USDA's Natural Resource Conservation Service. Payment data currently are not included for the Environmental Quality Incentives Program, but will be added once NRCS makes it available.

The information provided for the Wetland Reserve Program (WRP) provides an inaccurate picture of how WRP payments are distributed. USDA's Natural Resource Conservation Service uses title companies as intermediaries to finalize wetlands easements under the Wetlands Reserve Program. As a result, the data provided to us shows large

## USDA subsidy information for **Loring Hutterian Brethren**

### Payment Breakdown

Subsidy Program	Total Payments 1995-2010
<b>Total USDA - Subsidies</b>	<b>\$1,585,846</b>
<i>Subtotal, Farming Subsidies</i>	<b>\$1,204,053</b>
<i>Subtotal, Conservation Programs</i>	<b>\$252,000</b>
<i>Subtotal, Disaster Payments</i>	<b>\$129,793</b>

### Commodity subsidy breakdown

Subsidy Program	Total Payments 1995-2010
<b>Subtotal, Farming Subsidies</b>	<b>\$1,204,053</b>
<i>Total Direct Payments</i>	<b>\$333,014</b>
Direct Program Payments - 2008 Farm Bill	\$93,014
Direct Payment - Barley	\$36,850
Direct Payment - Oats	\$177
Direct Payment - Wheat	\$202,973
<i>Total Counter Cyclical Payments</i>	<b>\$16,744</b>
Counter Cyclical Payment - Barley	\$16,744
<i>Production Flexibility Contracts</i>	<b>\$299,145</b>
Production Flexibility - Barley	\$41,772
Production Flexibility - Oats	\$342
Production Flexibility - Wheat	\$257,031
<i>Mkt. Loss Asst. - Commodity Crops</i>	<b>\$139,888</b>
Market Loss Assistance - Barley	\$4,220
Market Loss Assistance - Oats	\$71
Market Loss Assistance - Wheat	\$135,597
<i>Deficiency Payments</i>	<b>\$123</b>
Advance Deficiency - Barley	\$8,880
Deficiency - Barley	\$-8,880
Advance Deficiency - Oats	\$123
Advance Deficiency - Wheat	\$21,088
Deficiency - Wheat	\$-21,088
<i>Loan Deficiency Payments</i>	<b>\$351,285</b>
Loan Deficiency - Barley	\$192,234

Loan Def. Refund - Barley	\$-1,114
Loan Deficiency - Wheat	\$154,439
Loan Def. Refund - Wheat	\$-1,881
Loan Deficiency - Dry Peas	\$7,606
<b>Total Commodity Certificates</b>	<b>\$57,762</b>
Commodity Certificates - Barley	\$1,750
Commodity Certificates - Wheat	\$56,012
<b>Misc. Farm - Subsidies</b>	<b>\$6,092</b>
Interest Penalty Payments	\$52
Farm Storage - Barley	\$1,040
Small Hog Operation	\$5,000

**Conservation subsidy breakdown**

Subsidy Program	Total Payments 1995-2010
<b>Subtotal, Conservation Programs</b>	<b>\$252,000</b>
<i>Conservation Reserve Program</i>	<b>\$252,000</b>
CRP - Annual Land Rental	\$253,330
CRP - Haying / Grazing	\$-1,330

**Disaster subsidy breakdown**

Subsidy Program	Total Payments 1995-2010
<b>Subtotal, Disaster Payments</b>	<b>\$129,793</b>
<i>Misc. Disaster Payments</i>	<b>\$128,635</b>
Crop Disaster - Program	\$127,457
Non-insured Assistance	\$1,178
<i>Livestock Disaster / Emergency</i>	<b>\$330</b>
Emergency Livestock Feed Assistance	\$330
Livestock Compensation Program	\$828

**Note:** The information on conservation spending for 2010 is incomplete due to missing data from USDA's Natural Resource Conservation Service. Payment data currently are not included for the Environmental Quality Incentives Program, but will be added once NRCS makes it available.

The information provided for the Wetland Reserve Program (WRP) provides an inaccurate picture of how WRP payments are distributed. USDA's Natural Resource Conservation Service uses title companies as intermediaries to finalize wetlands easements under the Wetlands Reserve Program. As a result, the data provided to us shows large sums of money going to these title companies. In reality, the payments are ultimately distributed to landowners participating in the WRP.

Unfortunately, NRCS has not provided the data to show where these farms and wetlands are located or which farmers or landowners are enrolling in the program, so EWG is unable to allocate these large sums of money to individuals beyond the title companies. Therefore, these companies skew the conservation rankings and payment concentration, which EWG cannot avoid unless and until NRCS makes available the additional farm attribution data. Therefore, we have not included WRP payments in the 2010 data update.

Finally, we have separated data on farm commodity, disaster and conservation payments in order to provide a more accurate picture of top recipients and concentration of payments among the three main categories of USDA programs.

USDA subsidy information for **Loring Hutterian Brethren****Ownership shares for Loring Hutterian Brethren**

Pick year for ownership information

USDA county office/Ownership:	Percentage Share*
<b>Loring Hutterian Brethren</b> <b>ownership information from 2010</b> <b>Phillips County, Montana</b>	
<a href="#">Anita Hofer</a>	N/A*
<a href="#">Debra Hofer</a>	N/A*
<a href="#">Glenda Hofer</a>	N/A*
<a href="#">Mary Hofer</a>	N/A*
<a href="#">Levi Hofer</a>	N/A*
<a href="#">Jennifer Hofer</a>	N/A*
<a href="#">Titus John Hofer</a>	N/A*
<a href="#">Barbara M Hofer</a>	N/A*
<a href="#">Dorothy Matilda Hofer</a>	N/A*
<a href="#">Susie G Hofer</a>	N/A*
<a href="#">Larry Hofer</a>	N/A*
<a href="#">Cody Hofer</a>	N/A*
<a href="#">Lorraine Hofer</a>	N/A*
<a href="#">Lowell Hofer</a>	N/A*
<a href="#">Bradley Hofer</a>	N/A*
<a href="#">Tamra Hofer</a>	N/A*
<a href="#">Annie P Hofer</a>	N/A*
<a href="#">Elizabeth D Hofer</a>	N/A*
<a href="#">Barbara J Hofer</a>	N/A*
<a href="#">Paul A Hofer</a>	N/A*
<a href="#">Josh B Hofer</a>	N/A*
<a href="#">Mike B Hofer</a>	N/A*
<a href="#">Kurt K Hofer</a>	N/A*
<a href="#">John M Hofer</a>	N/A*
<a href="#">Joe M Hofer</a>	N/A*
<a href="#">Mike Hofer Jr</a>	N/A*

<u>Eddie P Hofer</u>	N/A*
<u>Timmy Hofer</u>	N/A*
<u>Kathryn K Hofer</u>	N/A*
<u>Joyce Hofer</u>	N/A*
<u>Jordan J Hofer</u>	N/A*
<u>Carla K Hofer</u>	N/A*
<u>Amber Hofer</u>	N/A*
<u>Justin Hofer</u>	N/A*
<u>Samantha J Hofer</u>	N/A*
<u>Carrieann Hofer</u>	N/A*
<u>Christina R Hofer</u>	N/A*
<u>Marvin J Hofer</u>	N/A*
<u>Corrine K Hofer</u>	N/A*
<u>Cristin Ben Hofer</u>	N/A*

\* According to USDA percentage shares for ownership may not reflect share of subsidy payments. EWG review shows that share information on file with USDA may not always equal 100 percent. Most recent percentage share information is from 2008. Future release of this information was barred by law in the 2008 Farm Bill.

**Note:** The information on conservation spending for 2010 is incomplete due to missing data from USDA's Natural Resource Conservation Service. Payment data currently are not included for the Environmental Quality Incentives Program, but will be added once NRCS makes it available.

The information provided for the Wetland Reserve Program (WRP) provides an inaccurate picture of how WRP payments are distributed. USDA's Natural Resource Conservation Service uses title companies as intermediaries to finalize wetlands easements under the Wetlands Reserve Program. As a result, the data provided to us shows large sums of money going to these title companies. In reality, the payments are ultimately distributed to landowners participating in the WRP.

Unfortunately, NRCS has not provided the data to show where these farms and wetlands are located or which farmers or landowners are enrolling in the program, so EWG is unable to allocate these large sums of money to individuals beyond the title companies. Therefore, these companies skew the conservation rankings and payment concentration, which EWG cannot avoid unless and until NRCS makes available the additional farm attribution data. Therefore, we have not included WRP payments in the 2010 data update.

Finally, we have separated data on farm commodity, disaster and conservation payments in order to provide a more accurate picture of top recipients and concentration of payments among the three main categories of USDA programs.

```
810393285LOLO PRESCHOOL AND CHILDCARE  
11150 NAPTON WAY LOLO MT59847-972400000332  
19830811103205900010100000020091214010 1200000000064750000000177032  
0000000177032 P33Z  
421664057LOLO WATERSHED GROUP  
% KRISTA CRETE TREASURER PO BOX 1354 LOLO  
MT59847-135400000331 20060311500000000010120091220101200020  
1200000000000000000000000000 C32  
810518821LONE TREE SENIOR LIVING  
% SIDNEY HEALTH CENTER 214 14TH AVENUE SW SIDNEY  
MT59270-352100000331 19980711699515300010100000020100666010  
06000000018786310000001056377 0000001056377 E91  
272503111LONG RACE FOUNDATION  
% MATTHEW REAGAN PO BOX 1306  
ANACONDA MT59711-130600000331  
20100811500000000010100000020101200020 1200000000000000000000000000  
00000000000000 E86  
810539969LONGFELLOW PARENT ASSOCIATION  
% LONGFELLOW SCHOOL 516 S TRACY AVE BOZEMAN  
MT59715-527800000331 20010811600000000010100000020100623020  
06000000000126450000000036385 0000000017907 B11  
810420318LORDS CHURCH A CORPORATION  
930 S CATLIN ST MISSOULA MT59801-331000000337  
198512110001007000101000000 00060 12  
133374261LORE KANN FOUNDATION INC  
% SAMUEL COHEN & COMPANY 177 OLD CLYDE PARK RD  
LIVINGSTON MT59047-922600000331  
19861110460200000010100000020101252001 12000000081673800000000013170  
810529083LOREN L KRECK CHARITABLE REMAINDER ANNUITY TR  
% FIRST INTERSTATE BANK OF POLSON PO BOX 1299 POLSON  
MT59860-129900009001 00000000092800000001200000020101200000  
120000000060797000000000000000  
206805556LORETTA J COLLINS CHARITABLE REMAINDER UNITRUST  
1667 WHITEFISH STAGE RD STE 100 KALISPELL MT59901-217300009001  
0000000000000000000012000000 00000 12  
LORETTA J COLLINS TTEE  
810381780LORING  
PO BOX 335 LORING MT59537-033593860397  
198804110001000000101000000 00060 12  
810512681LOST AND FOUNDATION LIMITED  
% JOHN C MOORE 517 KNIGHT ST HELENA  
MT59601-263800000331 19970311599556056110100000020101233010  
1200000000257840000000099679 0000000098150 T99  
810440413LOST CREEK RACEWAY ASSOCIATION INC  
PO BOX 655 ANACONDA MT59711-065500000433  
19881220031700000010100000020091243010 1200000001426820000000081573  
0000000081573  
810445071LOUD THUNDER INTERNATIONAL INC  
PO BOX 361 MISSOULA MT59806-036100000331  
19880111592300000010100000020091200020 1200000000000000000000000000  
00000000000000  
816090522LOUISE E SENFT SCHOLARSHIP FOUNDATION  
% DAVIDSON TRUST CO PO BOX 2309 GREAT FALLS  
FALLS MT59403-230900000331 00000000400000000010100000020101242001  
1200000001281050000000014958  
262844097LOUVIN FOUNDATION  
% VINCENT T LARSEN 910 COBURN RD
```

**MELISSA DATA**[Sign In](#) | [Cart](#) | [Newsletters](#) | [Search](#) 

1-800-MELISSA

[Products](#)[Solutions](#)[Downloads & Trials](#)[Support](#)[Resources](#)[Lookups](#)[Contact Us](#)[Free Lookups](#)[Home](#) > [Lookups](#) > Nonprofit Organization Lookup[Help](#)**Expand sales and marketing PR with phone append.***Go ahead... reach out and call someone!***Start Today**Enter a 5-digit ZIP Code,  
organization name or 9-digit Tax ID

Use this LookUp to:

- Find information on over 1.4 million registered nonprofit organizations in the United States
- Get organization name, assets, income, and IRS subsection
- Select organization for contact name and address, type of foundation and organization
- Get deductibility status, classification, Form 990, and more

**LORING**

Address	PO BOX 335 LORING, MT 59537-0335 <a href="#">MapG</a> <a href="#">MapY</a> <a href="#">MapV</a>
IRS Subsection	501(c)(3) - A religious, educational, charitable, scientific or literary organization.
Type of Foundation	Church
Type of Organization	Corporation
Deductibility	Contributions are deductible
Tax I.D. Number	810381780
Exempt Since	04-1988
Form 990 Requirement	Not required to file (church)

Activity #1Church, synagogue, etc

Share with others information about this Nonprofit - like the web site, e-mail address, how to donate or any corrections to the data shown.

## Messages

[How Can We Improve this Lookup?](#) | [Send to a Friend](#) | [Lookups Forum](#) | [Terms of Use](#)



## EWG Farm Subsidy Database

### Corporate Subsidy Recipients 1 to 1 of 1 in Montana

Business Name: **MARTINSDALE**

Rank	Name	Location	Subsidy Total 1995-2010
1	<u>Martinsdale Colony</u>	Martinsdale, MT 59053	\$ 1,792,252.43

**Note:** The information on conservation spending for 2010 is incomplete due to missing data from USDA's Natural Resource Conservation Service. Payment data currently are not included for the Environmental Quality Incentives Program, but will be added once NRCS makes it available.

The information provided for the Wetland Reserve Program (WRP) provides an inaccurate picture of how WRP payments are distributed. USDA's Natural Resource Conservation Service uses title companies as intermediaries to finalize wetlands easements under the Wetlands Reserve Program. As a result, the data provided to us shows large sums of money going to these title companies. In reality, the payments are ultimately distributed to landowners participating in the WRP.

Unfortunately, NRCS has not provided the data to show where these farms and wetlands are located or which farmers or landowners are enrolling in the program, so EWG is unable to allocate these large sums of money to individuals beyond the title companies. Therefore, these companies skew the conservation rankings and payment concentration, which EWG cannot avoid unless and until NRCS makes available the additional farm attribution data. Therefore, we have not included WRP payments in the 2010 data update.

Finally, we have separated data on farm commodity, disaster and conservation payments in order to provide a more accurate picture of top recipients and concentration of payments among the three main categories of USDA programs.

USDA subsidy information for **Martinsdale Colony****Addresses on file with USDA for Martinsdale Colony**

USDA county office from which subsidies were paid:	Subsidy Payments 1995-2010	Most recent address on file in USDA county office
Wheatland County, Montana	\$1,792,252	Martinsdale Colony Martinsdale, MT 59053
<b>Total</b>	<b>\$1,792,252</b>	

**Note:** The information on conservation spending for 2010 is incomplete due to missing data from USDA's Natural Resource Conservation Service. Payment data currently are not included for the Environmental Quality Incentives Program, but will be added once NRCS makes it available.

The information provided for the Wetland Reserve Program (WRP) provides an inaccurate picture of how WRP payments are distributed. USDA's Natural Resource Conservation Service uses title companies as intermediaries to finalize wetlands easements under the Wetlands Reserve Program. As a result, the data provided to us shows large sums of money going to these title companies. In reality, the payments are ultimately distributed to landowners participating in the WRP.

Unfortunately, NRCS has not provided the data to show where these farms and wetlands are located or which farmers or landowners are enrolling in the program, so EWG is unable to allocate these large sums of money to individuals beyond the title companies. Therefore, these companies skew the conservation rankings and payment concentration, which EWG cannot avoid unless and until NRCS makes available the additional farm attribution data. Therefore, we have not included WRP payments in the 2010 data update.

Finally, we have separated data on farm commodity, disaster and conservation payments in order to provide a more accurate picture of top recipients and concentration of payments among the three main categories of USDA programs.

**Martinsdale Colony** received payments totaling **\$1,792,252** from 1995 through 2010

Year	Conservation Subsidies	Disaster Subsidies	Commodity Subsidies	Total USDA Subsidies 1995-2010
1995	\$0	\$0	\$83,803	\$83,803
1996	\$0	\$0	\$100,802	\$100,802
1997	\$0	\$0	\$40,000	\$40,000
1998	\$0	\$0	\$110,492	\$110,492
1999	\$0	\$0	\$86,340	\$86,340
2000	\$0	\$21,802	\$154,328	\$176,130
2001	\$0	\$75,496	\$68,540	\$144,036
2002	\$0	\$30,346	\$81,248	\$111,594
2003	\$0	\$67,486	\$86,919	\$154,405
2004	\$0	\$0	\$62,924	\$62,924
2005	\$0	\$56,601	\$74,125	\$130,726
2006	\$0	\$0	\$71,403	\$71,403
2007	\$0	\$0	\$46,549	\$46,549
2008	\$0	\$18,384	\$41,620	\$60,004
2009	\$177,784	\$0	\$95,904	\$273,687
2010	\$0	\$90,596	\$48,761	\$139,357
<b>Total</b>	<b>\$177,784</b>	<b>\$360,711</b>	<b>\$1,253,757</b>	<b>\$1,792,252</b>

**Crop Summary for Martinsdale Colony**

Crop	Payments 1995-2010
Wheat Subsidies**	\$453,712
Barley Subsidies**	\$417,565
Dairy Program Subsidies	\$171,324
Wool Subsidies	\$80,056
Livestock Subsidies	\$69,412
Sheep Meat Subsidies	\$41,042
Corn Subsidies**	\$4,255
Oat Subsidies**	\$2,220
Canola Subsidies**	\$1,747



## USDA subsidy information for Martinsdale Colony

### Payment Breakdown

Subsidy Program	Total Payments 1995-2010
<b>Total USDA - Subsidies</b>	<b>\$1,792,252</b>
<i>Subtotal, Farming Subsidies</i>	<b>\$1,253,757</b>
<i>Subtotal, Conservation Programs</i>	<b>\$177,784</b>
<i>Subtotal, Disaster Payments</i>	<b>\$360,711</b>

### Commodity subsidy breakdown

Subsidy Program	Total Payments 1995-2010
<b>Subtotal, Farming Subsidies</b>	<b>\$1,253,757</b>
<i>Total Direct Payments</i>	<b>\$317,235</b>
Direct Program Payments - 2008 Farm Bill	\$76,728
Direct Payment - Barley	\$115,827
Direct Payment - Oats	\$455
Direct Payment - Wheat	\$124,225
<i>Total Counter Cyclical Payments</i>	<b>\$21,941</b>
Counter Cyclical Payment - Barley	\$21,941
<i>Production Flexibility Contracts</i>	<b>\$301,492</b>
Production Flexibility - Barley	\$123,581
Production Flexibility - Oats	\$551
Production Flexibility - Wheat	\$177,360
<i>Mkt. Loss Asst. - Commodity Crops</i>	<b>\$139,140</b>
Market Loss Assistance - Barley	\$33,031
Market Loss Assistance - Oats	\$170
Market Loss Assistance - Wheat	\$105,939
<i>Market Loss Assistance - Non-commodity</i>	<b>\$38,998</b>
Market Loss Assistance - Dairy	\$23,141
Market Loss Assistance - Wool	\$15,858
<i>Oilseed Program</i>	<b>\$618</b>
Oilseed Program - Canola	\$618
<i>Deficiency Payments</i>	<b>\$26,176</b>
Advance Deficiency - Barley	\$26,906
Deficiency - Barley	\$-1,031

Advance Deficiency - Oats	\$301
Advance Deficiency - Wheat	\$22,793
Deficiency - Wheat	\$-22,793
<b>Loan Deficiency Payments</b>	<b>\$176,607</b>
Loan Deficiency - Barley	\$92,024
Loan Def. Refund - Barley	\$-275
Loan Deficiency - Canola Oil	\$1,129
Loan Deficiency - Corn	\$4,255
Loan Deficiency - Oats	\$812
Loan Def. Refund - Oats	\$-69
Loan Deficiency - Wheat	\$43,862
Loan Def. Refund - Wheat	\$-586
Loan Deficiency - Wool	\$29,611
Loan Deficiency - Unshorn Pelts	\$5,845
<b>Marketing Loan Gains</b>	<b>\$2,913</b>
Market Gains Farm - Wheat	\$2,913
<b>Total Dairy Program</b>	<b>\$148,184</b>
Milk Income Loss Contract Payment	\$106,623
Milk Income Loss Transitional Payment	\$23,900
Milk Marketing Fees	\$5,484
Dairy Economic Loss Assistance Program	\$12,177
<b>Wool And Mohair Programs</b>	<b>\$34,588</b>
Wool Promotion	\$2,898
Wool Program	\$31,690
<b>Total Lamb Payments</b>	<b>\$35,198</b>
Lamb Meat Adjustment - Ewe	\$14,508
Lamb Meat Adjustment - Facility	\$341
Lamb Meat Adjustment - Feeder	\$14,811
Lamb Meat Adjustment - Ewe Lamb Replacement And Retention	\$4,338
Lamb Meat Adjustment - Rams	\$1,200
<b>Misc. Farm - Subsidies</b>	<b>\$10,668</b>
Interest Penalty Payments	\$106
Farm Storage - Barley	\$5,562
Small Hog Operation	\$5,000

**Conservation subsidy breakdown**

Subsidy Program	Total Payments 1995-2010
<b>Subtotal, Conservation Programs</b>	<b>\$177,784</b>
<i>Env. Quality Incentive Program</i>	<b>\$177,784</b>
EQIP - Regular	\$177,784

**Disaster subsidy breakdown**

Subsidy Program	Total Payments 1995-2010
<b>Subtotal, Disaster Payments</b>	<b>\$360,711</b>
<i>Supplemental Revenue Assistance Payments Program</i>	<b>\$90,596</b>
SURE - Program Payments	\$55,657
SURE - 2010 Recovery Act Payments for Crop Year 2008	\$34,939
<i>Misc. Disaster Payments</i>	<b>\$205,703</b>
Crop Disaster - Program	\$194,155
Non-insured Assistance	\$11,548
<i>Livestock Disaster / Emergency</i>	<b>\$31,330</b>
Emergency Livestock Feed Assistance	\$31,330
Livestock Compensation Program	\$33,082

**Note:** The information on conservation spending for 2010 is incomplete due to missing data from USDA's Natural Resource Conservation Service. Payment data currently are not included for the Environmental Quality Incentives Program, but will be added once NRCS makes it available.

The information provided for the Wetland Reserve Program (WRP) provides an inaccurate picture of how WRP payments are distributed. USDA's Natural Resource Conservation Service uses title companies as intermediaries to finalize wetlands easements under the Wetlands Reserve Program. As a result, the data provided to us shows large sums of money going to these title companies. In reality, the payments are ultimately distributed to landowners participating in the WRP.

Unfortunately, NRCS has not provided the data to show where these farms and wetlands are located or which farmers or landowners are enrolling in the program, so EWG is unable to allocate these large sums of money to individuals beyond the title companies. Therefore, these companies skew the conservation rankings and payment concentration, which EWG cannot avoid unless and until NRCS makes available the additional farm attribution data. Therefore, we have not included WRP payments in the 2010 data update.

Finally, we have separated data on farm commodity, disaster and conservation payments in order to provide a more accurate picture of top recipients and concentration of payments among the three main categories of USDA programs.

USDA subsidy information for **Martinsdale Colony****Ownership shares for Martinsdale Colony**

Pick year for ownership information

USDA county office/Ownership:	Percentage Share*
<b>Martinsdale Colony</b>	
<b>ownership information from 2010</b>	
<b>Wheatland County, Montana</b>	
<a href="#">Christina J Wipf</a>	N/A*
<a href="#">Ruth J Kleinsasser</a>	N/A*
<a href="#">Mart E Wipf</a>	N/A*
<a href="#">Joshua L Wipf</a>	N/A*
<a href="#">Andy J Wipf</a>	N/A*
<a href="#">Randy E Wipf</a>	N/A*
<a href="#">Carnie E Wipf</a>	N/A*
<a href="#">Helen B Kleinsasser</a>	N/A*
<a href="#">Rachel P Wipf</a>	N/A*
<a href="#">Sara P Wipf</a>	N/A*
<a href="#">June L Wipf</a>	N/A*
<a href="#">Mary P Wipf</a>	N/A*
<a href="#">Katie J Wipf</a>	N/A*
<a href="#">Magdalena B Kleinsasser</a>	N/A*
<a href="#">Mike P Hofer</a>	N/A*
<a href="#">John M Hofer</a>	N/A*
<a href="#">Anna Wipf</a>	N/A*
<a href="#">Susie J Wipf</a>	N/A*
<a href="#">Rueben E Wipf</a>	N/A*
<a href="#">Rebecca J Wipf</a>	N/A*
<a href="#">Peter J Wipf</a>	N/A*
<a href="#">Paul J Wipf</a>	N/A*
<a href="#">Martha E Wipf</a>	N/A*
<a href="#">Margareta J Wipf</a>	N/A*
<a href="#">Lenord J Wipf</a>	N/A*
<a href="#">John J Wipf</a>	N/A*

<a href="#"><u>Elizabeth J Hofer</u></a>	N/A*
<a href="#"><u>Edward J Wipf</u></a>	N/A*
<a href="#"><u>Dorothy J Wipf</u></a>	N/A*
<a href="#"><u>Mike J Kleinsasser</u></a>	N/A*
<a href="#"><u>Ben J Kleinsasser</u></a>	N/A*
<a href="#"><u>Matilda J Wipf</u></a>	N/A*
<a href="#"><u>Susie J Kleinsasser</u></a>	N/A*
<a href="#"><u>Sarah M Hofer</u></a>	N/A*
<a href="#"><u>Rosa E Wipf</u></a>	N/A*
<a href="#"><u>Elizabeth J Wipf</u></a>	N/A*
<a href="#"><u>Walter J Wipf</u></a>	N/A*
<a href="#"><u>Joe P Wipf</u></a>	N/A*
<a href="#"><u>Edward J Wipf</u></a>	N/A*
<a href="#"><u>Margreth E Wipf</u></a>	N/A*
<a href="#"><u>Fred J Wipf</u></a>	N/A*
<a href="#"><u>Esther S Hofer</u></a>	N/A*
<a href="#"><u>Judy P Wipf</u></a>	N/A*
<a href="#"><u>Ida L Wipf</u></a>	N/A*
<a href="#"><u>Mary B Kleinsasser</u></a>	N/A*
<a href="#"><u>Kenny E Wipf</u></a>	N/A*
<a href="#"><u>Brenda L Wipf</u></a>	N/A*
<a href="#"><u>Nella J Kleinsasser</u></a>	N/A*
<a href="#"><u>Linda J Wipf</u></a>	N/A*
<a href="#"><u>Katie M Wipf</u></a>	N/A*
<a href="#"><u>Julia B Kleinsasser</u></a>	N/A*
<a href="#"><u>Donna J Wipf</u></a>	N/A*
<a href="#"><u>Dorothy J Wipf</u></a>	N/A*
<a href="#"><u>Joseph J Wipf</u></a>	N/A*
<a href="#"><u>Sarah L Wipf</u></a>	N/A*
<a href="#"><u>Susana J Wipf</u></a>	N/A*
<a href="#"><u>Peter J Wipf</u></a>	N/A*
<a href="#"><u>Katherine E Wipf</u></a>	N/A*
<a href="#"><u>Rita J Wipf</u></a>	N/A*
<a href="#"><u>William P Wipf</u></a>	N/A*
<a href="#"><u>Steven J Kleinsasser</u></a>	N/A*
<a href="#"><u>Elsie W Kleinsasser</u></a>	N/A*
<a href="#"><u>Edward J Wipf</u></a>	N/A*
<a href="#"><u>Metthew J Wipf</u></a>	N/A*
<a href="#"><u>Elsie P Wipf</u></a>	N/A*
<a href="#"><u>Adina J Wipf</u></a>	N/A*
<a href="#"><u>Freida J Wipf</u></a>	N/A*
<a href="#"><u>Danny P Wipf</u></a>	N/A*

<u>Susana P Wipf</u>	N/A*
<u>John E Wipf</u>	N/A*
<u>Laura E Wipf</u>	N/A*
<u>Diane Wipf</u>	N/A*
<u>Abigail J Wipf</u>	N/A*
<u>Marie P Wipf</u>	N/A*
<u>Jacob J Wipf</u>	N/A*
<u>Amanda J Wipf</u>	N/A*
<u>Susie J Wipf</u>	N/A*
<u>Janet P Wipf</u>	N/A*
<u>Jordan P Wipf</u>	N/A*
<u>Levi J Wipf</u>	N/A*
<u>Jacob L Wipf</u>	N/A*
<u>Justina M Wipf</u>	N/A*
<u>Joe B Kleinsasser</u>	N/A*
<u>Rhoda E Wipf</u>	N/A*
<u>Eli M Wipf</u>	N/A*
<u>Clarence E Wipf</u>	N/A*
<u>Brian B Kleinsasser</u>	N/A*
<u>Justin P Wipf</u>	N/A*
<u>Marissa Wipf</u>	N/A*
<u>Malissa P Wipf</u>	N/A*
<u>Jody W Wipf</u>	N/A*
<u>Aaron E Wipf</u>	N/A*
<u>Rachel J Wipf</u>	N/A*
<u>Lydia W Wipf</u>	N/A*
<u>Marilyn S Kleinsasser</u>	N/A*
<u>Barbara F Wipf</u>	N/A*
<u>Ron E Wipf</u>	N/A*
<u>Tara F Wipf</u>	N/A*
<u>Tyler F Wipf</u>	N/A*
<u>Jeremiah P Wipf</u>	N/A*
<u>Kevin E Wipf</u>	N/A*
<u>Clara W Wipf</u>	N/A*
<u>Jenna W Wipf</u>	N/A*
<u>Jeffrey E Wipf</u>	N/A*
<u>Martina S Kleinsasser</u>	N/A*
<u>Jason J Wipf</u>	N/A*
<u>Amy E Wipf</u>	N/A*
<u>Darlene W Wipf</u>	N/A*
<u>Jeremy W Wipf</u>	N/A*
<u>Jaden J Wipf</u>	N/A*

<u>Joni S Kleinsasser</u>	N/A*
<u>Caroline E Wipf</u>	N/A*
<u>Melinda P Wipf</u>	N/A*
<u>Miriam F Wipf</u>	N/A*
USDA exempted entity from release	N/A*
USDA exempted entity from release	N/A*
USDA exempted entity from release	N/A*

\* According to USDA percentage shares for ownership may not reflect share of subsidy payments. EWG review shows that share information on file with USDA may not always equal 100 percent. Most recent percentage share information is from 2008. Future release of this information was barred by law in the 2008 Farm Bill.

**Note:** The information on conservation spending for 2010 is incomplete due to missing data from USDA's Natural Resource Conservation Service. Payment data currently are not included for the Environmental Quality Incentives Program, but will be added once NRCS makes it available.

The information provided for the Wetland Reserve Program (WRP) provides an inaccurate picture of how WRP payments are distributed. USDA's Natural Resource Conservation Service uses title companies as intermediaries to finalize wetlands easements under the Wetlands Reserve Program. As a result, the data provided to us shows large sums of money going to these title companies. In reality, the payments are ultimately distributed to landowners participating in the WRP.

Unfortunately, NRCS has not provided the data to show where these farms and wetlands are located or which farmers or landowners are enrolling in the program, so EWG is unable to allocate these large sums of money to individuals beyond the title companies. Therefore, these companies skew the conservation rankings and payment concentration, which EWG cannot avoid unless and until NRCS makes available the additional farm attribution data. Therefore, we have not included WRP payments in the 2010 data update.

Finally, we have separated data on farm commodity, disaster and conservation payments in order to provide a more accurate picture of top recipients and concentration of payments among the three main categories of USDA programs.

363700887MARSHALL AND MARY BRONDUM SPECIAL ASSISTANCE FOUNDATION INC  
 PO BOX 3106 MISSOULA MT59806-310600000331  
 19900710456100000010100000020110365001 0300000030639440000000695773  
 562562859MARTIAL ARTS ACADEMY OF BILLINGS BOOSTER CLUB  
 % MICHAEL MOORE 528 LAKE ELMO DR  
 BILLINGS MT59105-305200000331  
 20061211600000000010120101220091200020 120000000000000000000000000000  
 0000000000000 B11  
 810283678MARTINSDALE COLONY INC  
 PO BOX 152 MARTINSDALE MT59053-015200004031  
 201010200000000000101000000 00000 12  
 X99  
 810500179MARTINSDALE COMMUNITY AID  
 % ETHEL BERG PO BOX 73  
 MARTINSDALE MT59053-007300000331  
 19951211529600000010100000020071200020 120000000000000000000000000000  
 0000000000000 N31Z  
 816091891MARTINSON CHARITABLE TR  
 166 10TH AVE N FORSYTH MT59327-000000009001  
 00000000092800000001200000020101200000 120000000161312000000000000000  
 MARTINSON RICHARD TTEE  
 276869945MARVIN & DARLENE HARTZE CHARITABLE LEAD ANNUITY TR  
 115 KINNIKINNICK CT MISSOULA MT59803-251500009001  
 00000000092800000001200000020101200000 120000000983968000000000000000  
 CRAIG HARTZE TTEE  
 810461428MARY ALICE FORTIN FOUNDATION FOR YOUTH ENRICHMENT  
 % NICK CLADIS 1500 POLY DR CO NICK CLADIS  
 BILLINGS MT59102-000000000331  
 19910410492260200010100000020101254001 12000000061039900000000104434  
 816078170MARY B BIELENBERG CHARITABLE REMAINDER TRUST  
 295 RIVERBEND RD BIGFORK MT59911-634200009001  
 00000000092800000001200000020101200000 120000000472285000000000000000  
 266814135MARY B GREENE CHARITABLE REMAINDER UNITRUST  
 % DAVIDSON TRUST CO TTEE 283 W FRONT ST STE 103  
 MISSOULA MT59802-432800009001  
 00000000092800000001200000020101200000 120000000241449000000000000000  
 816053279MARY BAKER EMERICK TRUST  
 PO BOX 597 HELENA MT59624-059700000331  
 19830611704060200030100000020100662020 0600000011622250000000014541  
 00000000029789 B110  
 816093604MARY D MUNGER CHARITABLE REMAINDER UNITRUST  
 2572 MCHUGH LN HELENA MT59601-024800009001  
 00000000092800000001200000020101200000 120000000090000000000000000000  
 MUNGER MARY D TTEE  
 810537946MARY ELIZABETH & WILLIAM MCCANN FOUNDATION  
 3385 GRANGER AVE S OFC 72 BILLINGS MT59102-703000000331  
 20030410400000000010100000020101241001 12000000012316800000000003146  
 B82 MCCAN MARY E TTEE  
 810544809MARY JANE STREET CHARITABLE REMAINDER UNITRUST  
 PO BOX 1398 WHITEFISH MT59937-139800009001  
 00000000092800000001200000020101200000 120000001216679000000000000000  
 HANSON GERALD L TTEE  
 816102884MARY L MCDONALD CHARITABLE REMAINDER UNITRUST A  
 4215 SOUTH AVE W MISSOULA MT59804-620500009001  
 00000000092800000001200000020101200000 120000000134902000000000000000  
 DOUGHERTY DAMIEN TTEE

**MELISSA DATA**[Sign In](#) | [Cart](#) | [Newsletters](#) | [Search](#) 

1-800-MELISSA

[Products](#)[Solutions](#)[Downloads & Trials](#)[Support](#)[Resources](#)[Lookups](#)[Contact Us](#)[Free Lookups](#)[Home](#) > [Lookups](#) > Nonprofit Organization Lookup[Help](#)**NCOA<sup>Link®</sup> Automation Move-Update Service - For every business, every size.**[Start Today](#)Enter a 5-digit ZIP Code,  
organization name or 9-digit Tax ID[Submit](#)**Use this Lookup to:**

- Find information on over 1.4 million registered nonprofit organizations in the United States
- Get organization name, assets, income, and IRS subsection
- Select organization for contact name and address, type of foundation and organization
- Get deductibility status, classification, Form 990, and more

**MARTINSDALE COLONY INC****PO BOX 152****Address** MARTINSDALE, MT [59053-0152](#)[MapG](#) [MapY](#) [MapV](#)**IRS Subsection** 501(d) - A religious and apostolic association.**Type of Organization** Corporation**Deductibility** Contributions are NOT deductible**Tax I.D. Number** 810283678**Exempt Since** 10-2010**Form 990 Requirement** Not required to file 990**Classification** Religion Related, Spiritual Development N.E.C.

Share with others information about this Nonprofit - like the web site, e-mail address, how to donate or any corrections to the data shown.

[Post a Message](#)**Messages**[How Can We Improve this Lookup?](#) | [Send to a Friend](#) | [Lookups Forum](#) | [Terms of Use](#)



## EWG Farm Subsidy Database

Corporate Subsidy Recipients **1** to **1** of **1** in Montana

Business Name: **NORTH HARLEM HUTTERIAN**

Rank	Name	Location	Subsidy Total 1995-2010
1	<u><a href="#">North Harlem Hutterian Brethren I</a></u>	Harlem, MT 59526	\$ 107,386.25

**Note:** The information on conservation spending for 2010 is incomplete due to missing data from USDA's Natural Resource Conservation Service. Payment data currently are not included for the Environmental Quality Incentives Program, but will be added once NRCS makes it available.

The information provided for the Wetland Reserve Program (WRP) provides an inaccurate picture of how WRP payments are distributed. USDA's Natural Resource Conservation Service uses title companies as intermediaries to finalize wetlands easements under the Wetlands Reserve Program. As a result, the data provided to us shows large sums of money going to these title companies. In reality, the payments are ultimately distributed to landowners participating in the WRP.

Unfortunately, NRCS has not provided the data to show where these farms and wetlands are located or which farmers or landowners are enrolling in the program, so EWG is unable to allocate these large sums of money to individuals beyond the title companies. Therefore, these companies skew the conservation rankings and payment concentration, which EWG cannot avoid unless and until NRCS makes available the additional farm attribution data. Therefore, we have not included WRP payments in the 2010 data update.

Finally, we have separated data on farm commodity, disaster and conservation payments in order to provide a more accurate picture of top recipients and concentration of payments among the three main categories of USDA programs.

## USDA subsidy information for North Harlem Hutterian Brethren I

### Addresses on file with USDA for North Harlem Hutterian Brethren I

USDA county office from which subsidies were paid:	Subsidy Payments 1995-2010	Most recent address on file in USDA county office
Blaine County, Montana	\$107,386	North Harlem Hutterian Brethren I Harlem, MT 59526
<b>Total</b>	<b>\$107,386</b>	

**Note:** The information on conservation spending for 2010 is incomplete due to missing data from USDA's Natural Resource Conservation Service. Payment data currently are not included for the Environmental Quality Incentives Program, but will be added once NRCS makes it available.

The information provided for the Wetland Reserve Program (WRP) provides an inaccurate picture of how WRP payments are distributed. USDA's Natural Resource Conservation Service uses title companies as intermediaries to finalize wetlands easements under the Wetlands Reserve Program. As a result, the data provided to us shows large sums of money going to these title companies. In reality, the payments are ultimately distributed to landowners participating in the WRP.

Unfortunately, NRCS has not provided the data to show where these farms and wetlands are located or which farmers or landowners are enrolling in the program, so EWG is unable to allocate these large sums of money to individuals beyond the title companies. Therefore, these companies skew the conservation rankings and payment concentration, which EWG cannot avoid unless and until NRCS makes available the additional farm attribution data. Therefore, we have not included WRP payments in the 2010 data update.

Finally, we have separated data on farm commodity, disaster and conservation payments in order to provide a more accurate picture of top recipients and concentration of payments among the three main categories of USDA programs.

### North Harlem Hutterian Brethren I received payments totaling \$107,386 from 1995 through 2010

Year	Conservation Subsidies	Disaster Subsidies	Commodity Subsidies	Total USDA Subsidies 1995-2010
1995	\$27,444	\$0	\$0	\$27,444
1996	\$26,889	\$0	\$0	\$26,889
1997	\$27,444	\$0	\$0	\$27,444
1998	\$0	\$0	\$0	\$0
1999	\$0	\$0	\$0	\$0
2000	\$0	\$0	\$0	\$0
2001	\$971	\$1,976	\$5	\$2,952
2002	\$9,135	\$3,474	\$0	\$12,609
2003	\$0	\$1,612	\$0	\$1,612
2004	\$0	\$0	\$0	\$0
2005	\$0	\$6,280	\$0	\$6,280
2006	\$0	\$0	\$0	\$0
2007	\$0	\$0	\$0	\$0
2008	\$0	\$2,156	\$0	\$2,156
2009	\$0	\$0	\$0	\$0
2010	\$0	\$0	\$0	\$0
<b>Total</b>	<b>\$91,883</b>	<b>\$15,498</b>	<b>\$5</b>	<b>\$107,386</b>

### Crop Summary for North Harlem Hutterian Brethren I

Crop	Payments 1995-2010
Livestock Subsidies	\$15,498

**Note:** The information on conservation spending for 2010 is incomplete due to missing data from USDA's Natural Resource Conservation Service. Payment data currently are not included for the Environmental Quality Incentives Program, but will be added once NRCS makes it available.

The information provided for the Wetland Reserve Program (WRP) provides an inaccurate picture of how WRP payments are distributed. USDA's Natural Resource Conservation Service uses title companies as intermediaries to finalize wetlands easements under the Wetlands Reserve Program. As a result, the data provided to us shows large sums of money going to these title companies. In reality, the payments are ultimately distributed to landowners participating in the WRP.

Unfortunately, NRCS has not provided the data to show where these farms and wetlands are located or which farmers or landowners are enrolling in the program, so EWG is unable to allocate these large sums of money to individuals beyond the title companies. Therefore, these companies skew the conservation rankings and payment concentration, which EWG cannot avoid unless and until NRCS makes available the additional farm attribution data. Therefore, we have not included WRP payments in the 2010 data update.

## USDA subsidy information for North Harlem Hutterian Brethren I

### Payment Breakdown

Subsidy Program	Total Payments 1995-2010
<b>Total USDA - Subsidies</b>	<b>\$107,386</b>
<i>Subtotal, Farming Subsidies</i>	<b>\$5</b>
<i>Subtotal, Conservation Programs</i>	<b>\$91,883</b>
<i>Subtotal, Disaster Payments</i>	<b>\$15,498</b>

### Commodity subsidy breakdown

Subsidy Program	Total Payments 1995-2010
<b>Subtotal, Farming Subsidies</b>	<b>\$5</b>
<i>Misc. Farm - Subsidies</i>	<b>\$5</b>
Interest Penalty Payments	<b>\$5</b>

### Conservation subsidy breakdown

Subsidy Program	Total Payments 1995-2010
<b>Subtotal, Conservation Programs</b>	<b>\$91,883</b>
<i>Conservation Reserve Program</i>	<b>\$75,838</b>
CRP - Annual Land Rental	<b>\$82,332</b>
CRP - Haying / Grazing	<b>\$-6,494</b>
<i>Emergency Conservation</i>	<b>\$16,045</b>
Emergency Conservation - Drought	<b>\$16,045</b>

### Disaster subsidy breakdown

Subsidy Program	Total Payments 1995-2010
<b>Subtotal, Disaster Payments</b>	<b>\$15,498</b>
<i>Livestock Disaster / Emergency</i>	<b>\$9,868</b>
Emergency Livestock Feed Assistance	<b>\$9,868</b>
Livestock Compensation Program	<b>\$5,630</b>

**Note:** The information on conservation spending for 2010 is incomplete due to missing data from USDA's Natural Resource Conservation Service. Payment data currently are not included for the Environmental Quality Incentives Program, but will be added once NRCS makes it available.

The information provided for the Wetland Reserve Program (WRP) provides an inaccurate picture of how WRP payments are distributed. USDA's Natural Resource Conservation Service uses title companies as intermediaries to finalize wetlands easements under the Wetlands Reserve Program. As a result, the data provided to us shows large



## USDA subsidy information for **North Harlem Hutterian Brethren I**

### Ownership shares for **North Harlem Hutterian Brethren I**

Pick year for ownership information

USDA county office/Ownership:

Percentage  
Share\*

**North Harlem Hutterian Brethren I**  
ownership information from 2008  
Blaine County, Montana

Members Of North Harlem Hutterian

100.00%

\* According to USDA percentage shares for ownership may not reflect share of subsidy payments. EWG review shows that share information on file with USDA may not always equal 100 percent. Most recent percentage share information is from 2008. Future release of this information was barred by law in the 2008 Farm Bill.

**Note:** The information on conservation spending for 2010 is incomplete due to missing data from USDA's Natural Resource Conservation Service. Payment data currently are not included for the Environmental Quality Incentives Program, but will be added once NRCS makes it available.

The information provided for the Wetland Reserve Program (WRP) provides an inaccurate picture of how WRP payments are distributed. USDA's Natural Resource Conservation Service uses title companies as intermediaries to finalize wetlands easements under the Wetlands Reserve Program. As a result, the data provided to us shows large sums of money going to these title companies. In reality, the payments are ultimately distributed to landowners participating in the WRP.

Unfortunately, NRCS has not provided the data to show where these farms and wetlands are located or which farmers or landowners are enrolling in the program, so EWG is unable to allocate these large sums of money to individuals beyond the title companies. Therefore, these companies skew the conservation rankings and payment concentration, which EWG cannot avoid unless and until NRCS makes available the additional farm attribution data. Therefore, we have not included WRP payments in the 2010 data update.

Finally, we have separated data on farm commodity, disaster and conservation payments in order to provide a more accurate picture of top recipients and concentration of payments among the three main categories of USDA programs.



## USDA subsidy information for **Members Of North Harlem Hutterian**

### Recipient's ownership share(s)

Recipient:	County	Percentage Share*
	Blaine County, Montana	100.0 %
<u>North Harlem Hutterian Brethren I</u>	Blaine County, Montana	100.0 %
	Blaine County, Montana	100.0 %

\* Most recent percentage share information is from 2008. According to USDA percentage shares for ownership may not reflect share of subsidy payments. EWG review shows that share information on file with USDA may not equal 100 percent.

**Note:** The information on conservation spending for 2010 is incomplete due to missing data from USDA's Natural Resource Conservation Service. Payment data currently are not included for the Environmental Quality Incentives Program, but will be added once NRCS makes it available.

The information provided for the Wetland Reserve Program (WRP) provides an inaccurate picture of how WRP payments are distributed. USDA's Natural Resource Conservation Service uses title companies as intermediaries to finalize wetlands easements under the Wetlands Reserve Program. As a result, the data provided to us shows large sums of money going to these title companies. In reality, the payments are ultimately distributed to landowners participating in the WRP.

Unfortunately, NRCS has not provided the data to show where these farms and wetlands are located or which farmers or landowners are enrolling in the program, so EWG is unable to allocate these large sums of money to individuals beyond the title companies. Therefore, these companies skew the conservation rankings and payment concentration, which EWG cannot avoid unless and until NRCS makes available the additional farm attribution data. Therefore, we have not included WRP payments in the 2010 data update.

Finally, we have separated data on farm commodity, disaster and conservation payments in order to provide a more accurate picture of top recipients and concentration of payments among the three main categories of USDA programs.



## EWG Farm Subsidy Database

Corporate Subsidy Recipients **1** to **1** of **1** in Montana

Business Name: **PLEASANT VALLEY COLONY**

Rank	Name	Location	Subsidy Total 1995-2010
1	<a href="#">Pleasant Valley Colony</a>	Belt, MT 59412	\$ 1,715,581.82

**Note:** The information on conservation spending for 2010 is incomplete due to missing data from USDA's Natural Resource Conservation Service. Payment data currently are not included for the Environmental Quality Incentives Program, but will be added once NRCS makes it available.

The information provided for the Wetland Reserve Program (WRP) provides an inaccurate picture of how WRP payments are distributed. USDA's Natural Resource Conservation Service uses title companies as intermediaries to finalize wetlands easements under the Wetlands Reserve Program. As a result, the data provided to us shows large sums of money going to these title companies. In reality, the payments are ultimately distributed to landowners participating in the WRP.

Unfortunately, NRCS has not provided the data to show where these farms and wetlands are located or which farmers or landowners are enrolling in the program, so EWG is unable to allocate these large sums of money to individuals beyond the title companies. Therefore, these companies skew the conservation rankings and payment concentration, which EWG cannot avoid unless and until NRCS makes available the additional farm attribution data. Therefore, we have not included WRP payments in the 2010 data update.

Finally, we have separated data on farm commodity, disaster and conservation payments in order to provide a more accurate picture of top recipients and concentration of payments among the three main categories of USDA programs.



## USDA subsidy information for **Pleasant Valley Colony**

### Addresses on file with USDA for Pleasant Valley Colony

USDA county office from which subsidies were paid:	Subsidy Payments 1995-2010	Most recent address on file in USDA county office
Cascade County, Montana	\$1,707,418	Pleasant Valley Colony Belt, MT 59412
<b>Total</b>	<b>\$1,715,582</b>	

**Note:** The information on conservation spending for 2010 is incomplete due to missing data from USDA's Natural Resource Conservation Service. Payment data currently are not included for the Environmental Quality Incentives Program, but will be added once NRCS makes it available.

The information provided for the Wetland Reserve Program (WRP) provides an inaccurate picture of how WRP payments are distributed. USDA's Natural Resource Conservation Service uses title companies as intermediaries to finalize wetlands easements under the Wetlands Reserve Program. As a result, the data provided to us shows large sums of money going to these title companies. In reality, the payments are ultimately distributed to landowners participating in the WRP.

Unfortunately, NRCS has not provided the data to show where these farms and wetlands are located or which farmers or landowners are enrolling in the program, so EWG is unable to allocate these large sums of money to individuals beyond the title companies. Therefore, these companies skew the conservation rankings and payment concentration, which EWG cannot avoid unless and until NRCS makes available the additional farm attribution data. Therefore, we have not included WRP payments in the 2010 data update.

Finally, we have separated data on farm commodity, disaster and conservation payments in order to provide a more accurate picture of top recipients and concentration of payments among the three main categories of USDA programs.



**Pleasant Valley Colony received payments totaling \$1,715,582 from 1995 through 2010**

Year	Conservation Subsidies	Disaster Subsidies	Commodity Subsidies	Total USDA Subsidies 1995-2010
1995	\$0	\$0	\$50,000	\$50,000
1996	\$0	\$0	\$40,000	\$40,000
1997	\$0	\$0	\$25,821	\$25,821
1998	\$0	\$0	\$125,991	\$125,991
1999	\$-700	\$0	\$171,792	\$171,092
2000	\$7,380	\$8,059	\$226,124	\$241,563
2001	\$3,326	\$37,950	\$85,919	\$127,195
2002	\$20,833	\$34,972	\$65,748	\$121,553
2003	\$23,225	\$39,997	\$79,232	\$142,454
2004	\$38,880	\$2,145	\$74,726	\$115,751
2005	\$23,225	\$88,746	\$77,196	\$189,168
2006	\$23,225	\$0	\$57,981	\$81,206
2007	\$31,185	\$0	\$43,579	\$74,764
2008	\$0	\$7,482	\$47,165	\$54,647
2009	\$0	\$0	\$110,062	\$110,062
2010	\$0	\$0	\$44,315	\$44,315
<b>Total</b>	<b>\$170,579</b>	<b>\$219,351</b>	<b>\$1,325,652</b>	<b>\$1,715,582</b>

**Crop Summary for Pleasant Valley Colony**

Crop	Payments 1995-2010
Wheat Subsidies**	\$783,139
Barley Subsidies**	\$268,777
Dairy Program Subsidies	\$193,343
Livestock Subsidies	\$42,630
Oat Subsidies**	\$543

**Note:** The information on conservation spending for 2010 is incomplete due to missing data from USDA's Natural Resource Conservation Service. Payment data currently are not included for the Environmental Quality Incentives Program, but will be added once NRCS makes it available.

The information provided for the Wetland Reserve Program (WRP) provides an inaccurate picture of how WRP payments are distributed. USDA's Natural Resource Conservation Service uses title companies as intermediaries to finalize wetlands easements under the Wetlands Reserve Program. As a result, the data provided to us shows large

USDA subsidy information for **Pleasant Valley Colony****Payment Breakdown**

Subsidy Program	Total Payments 1995-2010
<b>Total USDA - Subsidies</b>	<b>\$1,715,582</b>
<i>Subtotal, Farming Subsidies</i>	<b>\$1,325,652</b>
<i>Subtotal, Conservation Programs</i>	<b>\$170,579</b>
<i>Subtotal, Disaster Payments</i>	<b>\$219,351</b>

**Commodity subsidy breakdown**

Subsidy Program	Total Payments 1995-2010
<b>Subtotal, Farming Subsidies</b>	<b>\$1,325,652</b>
<i>Total Direct Payments</i>	<b>\$319,728</b>
Direct Program Payments - 2008 Farm Bill	\$79,728
Direct Payment - Barley	\$39,203
Direct Payment - Oats	\$4
Direct Payment - Wheat	\$200,793
<i>Total Counter Cyclical Payments</i>	<b>\$19,040</b>
Counter Cyclical Payment - Barley	\$19,040
<i>Production Flexibility Contracts</i>	<b>\$315,668</b>
Production Flexibility - Barley	\$28,240
Production Flexibility - Oats	\$383
Production Flexibility - Wheat	\$287,045
<i>Mkt. Loss Asst. - Commodity Crops</i>	<b>\$139,888</b>
Market Loss Assistance - Barley	\$7,704
Market Loss Assistance - Oats	\$3
Market Loss Assistance - Wheat	\$132,181
<i>Market Loss Assistance - Non-commodity</i>	<b>\$24,406</b>
Market Loss Assistance - Dairy	\$24,406
<i>Deficiency Payments</i>	<b>\$153</b>
Advance Deficiency - Barley	\$10,201
Deficiency - Barley	\$-10,201
Advance Deficiency - Oats	\$268
Deficiency - Oats	\$-115
Advance Deficiency - Wheat	\$39,531

Deficiency - Wheat	\$-39,531
<i>Loan Deficiency Payments</i>	<b>\$293,660</b>
Loan Deficiency - Barley	\$131,198
Loan Def. Refund - Barley	\$-657
Loan Deficiency - Wheat	\$163,383
Loan Def. Refund - Wheat	\$-264
<i>Total Commodity Certificates</i>	<b>\$44,049</b>
Commodity Certificates - Barley	\$44,049
<i>Total Dairy Program</i>	<b>\$168,937</b>
Milk Income Loss Contract Payment	\$128,613
Milk Income Loss Transitional Payment	\$19,884
Dairy Economic Loss Assistance Program	\$20,441
<i>Misc. Farm - Subsidies</i>	<b>\$122</b>
Interest Penalty Payments	\$122

**Conservation subsidy breakdown**


Subsidy Program	Total Payments 1995-2010
<b>Subtotal, Conservation Programs</b>	<b>\$170,579</b>
<i>Conservation Reserve Program</i>	<b>\$134,894</b>
CRP - Annual Land Rental	\$139,146
CRP - Failure To Comply	\$-700
CRP - Haying / Grazing	\$-3,552
<i>Env. Quality Incentive Program</i>	<b>\$24,979</b>
EQIP - Regular	\$24,979
<i>Emergency Conservation</i>	<b>\$10,706</b>
Emergency Conservation - Drought	\$10,706

**Disaster subsidy breakdown**

Subsidy Program	Total Payments 1995-2010
<b>Subtotal, Disaster Payments</b>	<b>\$219,351</b>
<i>Misc. Disaster Payments</i>	<b>\$176,721</b>
Crop Disaster - Program	\$155,564
Non-insured Assistance	\$6,441
Quality Losses Program	\$14,716
<i>Livestock Disaster / Emergency</i>	<b>\$20,617</b>
Emergency Livestock Feed Assistance	\$20,617
Livestock Compensation Program	\$22,013

**Note:** The information on conservation spending for 2010 is incomplete due to missing data from USDA's Natural Resource Conservation Service. Payment data currently are not included for the Environmental Quality Incentives Program, but will be added once NRCS makes it available.

The information provided for the Wetland Reserve Program (WRP) provides an inaccurate picture of how WRP payments are distributed. USDA's Natural Resource Conservation Service uses title companies as intermediaries to finalize wetlands easements under the Wetlands Reserve Program. As a result, the data provided to us shows large

USDA subsidy information for **Pleasant Valley Colony****Ownership shares for Pleasant Valley Colony**Pick year for ownership information 

USDA county office/Ownership:

Percentage  
Share\*

**Pleasant Valley Colony**  
**ownership information from 2008**  
**Cascade County, Montana**

Members Of Pleasant Valley Colony**100.00%**

\* According to USDA percentage shares for ownership may not reflect share of subsidy payments. EWG review shows that share information on file with USDA may not always equal 100 percent. Most recent percentage share information is from 2008. Future release of this information was barred by law in the 2008 Farm Bill.

**Note:** The information on conservation spending for 2010 is incomplete due to missing data from USDA's Natural Resource Conservation Service. Payment data currently are not included for the Environmental Quality Incentives Program, but will be added once NRCS makes it available.

The information provided for the Wetland Reserve Program (WRP) provides an inaccurate picture of how WRP payments are distributed. USDA's Natural Resource Conservation Service uses title companies as intermediaries to finalize wetlands easements under the Wetlands Reserve Program. As a result, the data provided to us shows large sums of money going to these title companies. In reality, the payments are ultimately distributed to landowners participating in the WRP.

Unfortunately, NRCS has not provided the data to show where these farms and wetlands are located or which farmers or landowners are enrolling in the program, so EWG is unable to allocate these large sums of money to individuals beyond the title companies. Therefore, these companies skew the conservation rankings and payment concentration, which EWG cannot avoid unless and until NRCS makes available the additional farm attribution data. Therefore, we have not included WRP payments in the 2010 data update.

Finally, we have separated data on farm commodity, disaster and conservation payments in order to provide a more accurate picture of top recipients and concentration of payments among the three main categories of USDA programs.



## USDA subsidy information for **Members Of Pleasant Valley Colony**

### Recipient's ownership share(s)

Recipient:	County	Percentage Share*
	Cascade County, Montana	100.0 %
<u>Pleasant Valley Colony</u>	Cascade County, Montana	100.0 %
	Cascade County, Montana	100.0 %

\* Most recent percentage share information is from 2008. According to USDA percentage shares for ownership may not reflect share of subsidy payments. EWG review shows that share information on file with USDA may not equal 100 percent.

**Note:** The information on conservation spending for 2010 is incomplete due to missing data from USDA's Natural Resource Conservation Service. Payment data currently are not included for the Environmental Quality Incentives Program, but will be added once NRCS makes it available.

The information provided for the Wetland Reserve Program (WRP) provides an inaccurate picture of how WRP payments are distributed. USDA's Natural Resource Conservation Service uses title companies as intermediaries to finalize wetlands easements under the Wetlands Reserve Program. As a result, the data provided to us shows large sums of money going to these title companies. In reality, the payments are ultimately distributed to landowners participating in the WRP.

Unfortunately, NRCS has not provided the data to show where these farms and wetlands are located or which farmers or landowners are enrolling in the program, so EWG is unable to allocate these large sums of money to individuals beyond the title companies. Therefore, these companies skew the conservation rankings and payment concentration, which EWG cannot avoid unless and until NRCS makes available the additional farm attribution data. Therefore, we have not included WRP payments in the 2010 data update.

Finally, we have separated data on farm commodity, disaster and conservation payments in order to provide a more accurate picture of top recipients and concentration of payments among the three main categories of USDA programs.

**MELISSA DATA**[Sign In](#) | [Cart](#) | [Newsletters](#) | [Search](#) 

1-800-MELISSA

[Products](#)[Solutions](#)[Downloads & Trials](#)[Support](#)[Resources](#)[Lookups](#)[Contact Us](#)**Free Lookups**[Home](#) > [Lookups](#) > **Nonprofit Organization Lookup**[Help](#)**Add ZIP, phone, & geographic data instantly, & it's all at your fingertips**[learn more](#)Enter a 5-digit ZIP Code,  
organization name or 9-digit Tax ID  
**Use this LookUp to:**

- Find information on over 1.4 million registered nonprofit organizations in the United States
- Get organization name, assets, income, and IRS subsection
- Select organization for contact name and address, type of foundation and organization
- Get deductibility status, classification, Form 990, and more

**PLEASANT VALLEY COLONY INC**

734 MCCOY RD

Address BELT, MT [59412-8247](#)[MapG](#) [MapY](#) [MapV](#)

IRS Subsection 501(d) - A religious and apostolic association.

Type of Organization Corporation

Deductibility Contributions are NOT deductible

Tax I.D. Number 810440667

Exempt Since 05-2009

Form 990 Requirement Not required to file 990

Classification Religion Related, Spiritual Development N.E.C.

Share with others information about this Nonprofit - like the web site, e-mail address, how to donate or any corrections to the data shown.

**Messages**[How Can We Improve this Lookup?](#) | [Send to a Friend](#) | [Lookups Forum](#) | [Terms of Use](#)



## EWG Farm Subsidy Database

### Corporate Subsidy Recipients 1 to 1 of 1 in Montana

Business Name: **PRAIRIE ELK HUTTERIAN**

Rank	Name	Location	Subsidy Total 1995-2010
1	<a href="#">Prairie Elk Hutterian Brethren In</a>	Wolf Point, MT 59201	\$ 216,176.02

**Note:** The information on conservation spending for 2010 is incomplete due to missing data from USDA's Natural Resource Conservation Service. Payment data currently are not included for the Environmental Quality Incentives Program, but will be added once NRCS makes it available.

The information provided for the Wetland Reserve Program (WRP) provides an inaccurate picture of how WRP payments are distributed. USDA's Natural Resource Conservation Service uses title companies as intermediaries to finalize wetlands easements under the Wetlands Reserve Program. As a result, the data provided to us shows large sums of money going to these title companies. In reality, the payments are ultimately distributed to landowners participating in the WRP.

Unfortunately, NRCS has not provided the data to show where these farms and wetlands are located or which farmers or landowners are enrolling in the program, so EWG is unable to allocate these large sums of money to individuals beyond the title companies. Therefore, these companies skew the conservation rankings and payment concentration, which EWG cannot avoid unless and until NRCS makes available the additional farm attribution data. Therefore, we have not included WRP payments in the 2010 data update.

Finally, we have separated data on farm commodity, disaster and conservation payments in order to provide a more accurate picture of top recipients and concentration of payments among the three main categories of USDA programs.



### USDA subsidy information for **Prairie Elk Hutterian Brethren In**

#### Addresses on file with USDA for **Prairie Elk Hutterian Brethren In**

USDA county office from which subsidies were paid:	Subsidy Payments 1995-2010	Most recent address on file in USDA county office
McCone County, Montana	\$216,176	Prairie Elk Hutterian Brethren In Wolf Point, MT 59201
<b>Total</b>	<b>\$216,176</b>	

**Note:** The information on conservation spending for 2010 is incomplete due to missing data from USDA's Natural Resource Conservation Service. Payment data currently are not included for the Environmental Quality Incentives Program, but will be added once NRCS makes it available.

The information provided for the Wetland Reserve Program (WRP) provides an inaccurate picture of how WRP payments are distributed. USDA's Natural Resource Conservation Service uses title companies as intermediaries to finalize wetlands easements under the Wetlands Reserve Program. As a result, the data provided to us shows large sums of money going to these title companies. In reality, the payments are ultimately distributed to landowners participating in the WRP.

Unfortunately, NRCS has not provided the data to show where these farms and wetlands are located or which farmers or landowners are enrolling in the program, so EWG is unable to allocate these large sums of money to individuals beyond the title companies. Therefore, these companies skew the conservation rankings and payment concentration, which EWG cannot avoid unless and until NRCS makes available the additional farm attribution data. Therefore, we have not included WRP payments in the 2010 data update.

Finally, we have separated data on farm commodity, disaster and conservation payments in order to provide a more accurate picture of top recipients and concentration of payments among the three main categories of USDA programs.



**Prairie Elk Hutterian Brethren In received payments totaling \$216,176 from 1995 through 2010**

Year	Conservation Subsidies	Disaster Subsidies	Commodity Subsidies	Total USDA Subsidies 1995-2010
1995	\$0	\$0	\$0	\$0
1996	\$0	\$0	\$0	\$0
1997	\$0	\$0	\$0	\$0
1998	\$0	\$0	\$0	\$0
1999	\$0	\$0	\$0	\$0
2000	\$0	\$0	\$0	\$0
2001	\$0	\$0	\$0	\$0
2002	\$0	\$0	\$0	\$0
2003	\$0	\$0	\$0	\$0
2004	\$0	\$0	\$0	\$0
2005	\$0	\$0	\$0	\$0
2006	\$0	\$0	\$45,320	\$45,320
2007	\$0	\$0	\$30,165	\$30,165
2008	\$0	\$40,724	\$32,229	\$72,953
2009	\$0	\$0	\$8,903	\$8,903
2010	\$0	\$0	\$58,835	\$58,835
<b>Total</b>	<b>\$0</b>	<b>\$40,724</b>	<b>\$175,452</b>	<b>\$216,176</b>

**Crop Summary for Prairie Elk Hutterian Brethren In**

Crop	Payments 1995-2010
Wheat Subsidies**	\$89,821
Dry Pea Subsidies	\$14,036
Barley Subsidies**	\$7,117
Livestock Subsidies	\$2,838
Oat Subsidies**	\$1,281

**Note:** The information on conservation spending for 2010 is incomplete due to missing data from USDA's Natural Resource Conservation Service. Payment data currently are not included for the Environmental Quality Incentives Program, but will be added once NRCS makes it available.

The information provided for the Wetland Reserve Program (WRP) provides an inaccurate picture of how WRP payments are distributed. USDA's Natural Resource Conservation Service uses title companies as intermediaries to finalize wetlands easements under the Wetlands Reserve Program. As a result, the data provided to us shows large

USDA subsidy information for **Prairie Elk Hutterian Brethren In****Payment Breakdown**

Subsidy Program	Total Payments 1995-2010
<b>Total USDA - Subsidies</b>	<b>\$216,176</b>
<i>Subtotal, Farming Subsidies</i>	<b>\$175,452</b>
<i>Subtotal, Disaster Payments</i>	<b>\$40,724</b>

**Commodity subsidy breakdown**

Subsidy Program	Total Payments 1995-2010
<b>Subtotal, Farming Subsidies</b>	<b>\$175,452</b>
<i>Total Direct Payments</i>	<b>\$153,400</b>
Direct Program Payments - 2008 Farm Bill	\$63,197
Direct Payment - Barley	\$2,817
Direct Payment - Oats	\$1,281
Direct Payment - Wheat	\$86,105
<i>Loan Deficiency Payments</i>	<b>\$22,052</b>
Loan Deficiency - Barley	\$4,300
Loan Deficiency - Wheat	\$3,716
Loan Deficiency - Dry Peas	\$14,036

**Disaster subsidy breakdown**

Subsidy Program	Total Payments 1995-2010
<b>Subtotal, Disaster Payments</b>	<b>\$40,724</b>
<i>Misc. Disaster Payments</i>	<b>\$37,886</b>
Crop Disaster - Program	\$37,886
Livestock Compensation Program	\$2,838

**Note:** The information on conservation spending for 2010 is incomplete due to missing data from USDA's Natural Resource Conservation Service. Payment data currently are not included for the Environmental Quality Incentives Program, but will be added once NRCS makes it available.

The information provided for the Wetland Reserve Program (WRP) provides an inaccurate picture of how WRP payments are distributed. USDA's Natural Resource Conservation Service uses title companies as intermediaries to finalize wetlands easements under the Wetlands Reserve Program. As a result, the data provided to us shows large sums of money going to these title companies. In reality, the payments are ultimately distributed to landowners participating in the WRP.

Unfortunately, NRCS has not provided the data to show where these farms and wetlands are located or which farmers or landowners are enrolling in the program, so EWG is unable to allocate these large sums of money to individuals beyond the title companies. Therefore, these companies skew the conservation rankings and payment concentration,

USDA subsidy information for **Prairie Elk Hutterian Brethren In****Ownership shares for Prairie Elk Hutterian Brethren In**

Pick year for ownership information

USDA county office/Ownership:	Percentage Share*
<b>Prairie Elk Hutterian Brethren In ownership information from 2009 McCone County, Montana</b>	
<a href="#">Ruth Walter</a>	N/A*
<a href="#">David Hofer</a>	N/A*
<a href="#">Darius Walter</a>	N/A*
<a href="#">Elias Walter Jr</a>	N/A*
<a href="#">Benny Walter</a>	N/A*
<a href="#">David Walter</a>	N/A*
<a href="#">Joe Walter</a>	N/A*
<a href="#">Cathy J Walter</a>	N/A*
<a href="#">Dan Walter</a>	N/A*
<a href="#">Terry Walter</a>	N/A*
<a href="#">Ben Walter</a>	N/A*
<a href="#">Bob Walter</a>	N/A*
<a href="#">Anne Walter</a>	N/A*
<a href="#">Rachel Walter</a>	N/A*
<a href="#">Rachel Walter</a>	N/A*
<a href="#">Annie Walter</a>	N/A*
<a href="#">Esther Walter</a>	N/A*
<a href="#">Martha Walter</a>	N/A*
<a href="#">Matthew Walter</a>	N/A*
<a href="#">Rachel Walter</a>	N/A*
<a href="#">Johnny Walter</a>	N/A*
<a href="#">Levi Walter</a>	N/A*
<a href="#">Ryan Walter</a>	N/A*
<a href="#">Edmond Walter</a>	N/A*
<a href="#">Jayden Walter</a>	N/A*
<a href="#">Rosanna Walter</a>	N/A*

<u>Barbara Walter</u>	N/A*
<u>Julie M Walter</u>	N/A*
<u>Annie Walter</u>	N/A*
<u>Gideon Walter</u>	N/A*
<u>David Walter</u>	N/A*
<u>Brittany Walter</u>	N/A*
<u>Crystal Walter</u>	N/A*
<u>Renee Walter</u>	N/A*
<u>Annie Marie Walter</u>	N/A*
<u>Billy Walter</u>	N/A*
<u>Barbara Walter</u>	N/A*
<u>Jacob Walter</u>	N/A*
<u>Leah Susanna Walter</u>	N/A*
<u>Kendra Taylor Walter</u>	N/A*
<u>Karen Walter</u>	N/A*
<u>Mary Walter</u>	N/A*
<u>Paul Walter</u>	N/A*
<u>Abigail Walter</u>	N/A*
<u>Curtis Walter</u>	N/A*
<u>Caroline B Walter</u>	N/A*
<u>Shianne Walter</u>	N/A*
<u>Kaitlyn Walter</u>	N/A*
<u>Sydney Walter</u>	N/A*

\* According to USDA percentage shares for ownership may not reflect share of subsidy payments. EWG review shows that share information on file with USDA may not always equal 100 percent. Most recent percentage share information is from 2008. Future release of this information was barred by law in the 2008 Farm Bill.

**Note:** The information on conservation spending for 2010 is incomplete due to missing data from USDA's Natural Resource Conservation Service. Payment data currently are not included for the Environmental Quality Incentives Program, but will be added once NRCS makes it available.

The information provided for the Wetland Reserve Program (WRP) provides an inaccurate picture of how WRP payments are distributed. USDA's Natural Resource Conservation Service uses title companies as intermediaries to finalize wetlands easements under the Wetlands Reserve Program. As a result, the data provided to us shows large sums of money going to these title companies. In reality, the payments are ultimately distributed to landowners participating in the WRP.

Unfortunately, NRCS has not provided the data to show where these farms and wetlands are located or which farmers or landowners are enrolling in the program, so EWG is unable to allocate these large sums of money to individuals beyond the title companies. Therefore, these companies skew the conservation rankings and payment concentration, which EWG cannot avoid unless and until NRCS makes available the additional farm attribution data. Therefore, we have not included WRP payments in the 2010 data update.

Finally, we have separated data on farm commodity, disaster and conservation payments in order to provide a more accurate picture of top recipients and concentration of payments among the three main categories of USDA programs.

**MELISSA DATA**[Sign In](#) | [Cart](#) | [Newsletters](#) | [Search](#) 

1-800-MELISSA

[Products](#)[Solutions](#)[Downloads & Trials](#)[Support](#)[Resources](#)[Lookups](#)[Contact Us](#)[Free Lookups](#)[Home](#) > [Lookups](#) > Nonprofit Organization Lookup[Help](#)**NCOA Link® Move-Update Service.**[request free quote](#)

- Automated Batch Processing
- Custom Batch Processing
- 48-Month NCOA Link® Real-Time\* Web Service
- 72-Month Canadian Changes of Address

Enter a 5-digit ZIP Code,  
organization name or 9-digit Tax ID

  
[Submit](#)**Use this LookUp to:**

- Find information on over 1.4 million registered nonprofit organizations in the United States
- Get organization name, assets, income, and IRS subsection
- Select organization for contact name and address, type of foundation and organization
- Get deductibility status, classification, Form 990, and more

**PRAIRIE ELK HUTTERIAN BRETHERN INC**

In Care of Name	JOE WALTER
Address	1436 MT HIGHWAY 528 WOLF POINT, MT 59201-7109 <a href="#">MapG</a> <a href="#">MapY</a> <a href="#">MapV</a>
IRS Subsection	501(d) - A religious and apostolic association.
Type of Organization	Corporation
Deductibility	Contributions are NOT deductible
Tax I.D. Number	841616818
Exempt Since	09-2003
Form 990 Requirement	Not required to file 990
Classification	Religion Related, Spiritual Development N.E.C.

Share with others information about this Nonprofit - like the web site, e-mail address, how to donate or any corrections to the data shown.

[Post a Message](#)**Messages**[How Can We Improve this Lookup?](#) | [Send to a Friend](#) | [Lookups Forum](#) | [Terms of Use](#)



## EWG Farm Subsidy Database

Corporate Subsidy Recipients 1 to 1 of 1 in Montana

Business Name: **SPRING CREEK COLONY**

Rank	Name	Location	Subsidy Total 1995-2010
1	<u>Spring Creek Colony</u>	Lewistown, MT 59457	\$ 1,134,210.51

**Note:** The information on conservation spending for 2010 is incomplete due to missing data from USDA's Natural Resource Conservation Service. Payment data currently are not included for the Environmental Quality Incentives Program, but will be added once NRCS makes it available.

The information provided for the Wetland Reserve Program (WRP) provides an inaccurate picture of how WRP payments are distributed. USDA's Natural Resource Conservation Service uses title companies as intermediaries to finalize wetlands easements under the Wetlands Reserve Program. As a result, the data provided to us shows large sums of money going to these title companies. In reality, the payments are ultimately distributed to landowners participating in the WRP.

Unfortunately, NRCS has not provided the data to show where these farms and wetlands are located or which farmers or landowners are enrolling in the program, so EWG is unable to allocate these large sums of money to individuals beyond the title companies. Therefore, these companies skew the conservation rankings and payment concentration, which EWG cannot avoid unless and until NRCS makes available the additional farm attribution data. Therefore, we have not included WRP payments in the 2010 data update.

Finally, we have separated data on farm commodity, disaster and conservation payments in order to provide a more accurate picture of top recipients and concentration of payments among the three main categories of USDA programs.

USDA subsidy information for **Spring Creek Colony****Addresses on file with USDA for Spring Creek Colony**

USDA county office from which subsidies were paid:	Subsidy Payments 1995-2010	Most recent address on file in USDA county office
Fergus County, Montana	\$1,128,537	Spring Creek Colony Lewistown, MT 59457
<b>Total</b>	<b>\$1,134,211</b>	

**Note:** The information on conservation spending for 2010 is incomplete due to missing data from USDA's Natural Resource Conservation Service. Payment data currently are not included for the Environmental Quality Incentives Program, but will be added once NRCS makes it available.

The information provided for the Wetland Reserve Program (WRP) provides an inaccurate picture of how WRP payments are distributed. USDA's Natural Resource Conservation Service uses title companies as intermediaries to finalize wetlands easements under the Wetlands Reserve Program. As a result, the data provided to us shows large sums of money going to these title companies. In reality, the payments are ultimately distributed to landowners participating in the WRP.

Unfortunately, NRCS has not provided the data to show where these farms and wetlands are located or which farmers or landowners are enrolling in the program, so EWG is unable to allocate these large sums of money to individuals beyond the title companies. Therefore, these companies skew the conservation rankings and payment concentration, which EWG cannot avoid unless and until NRCS makes available the additional farm attribution data. Therefore, we have not included WRP payments in the 2010 data update.

Finally, we have separated data on farm commodity, disaster and conservation payments in order to provide a more accurate picture of top recipients and concentration of payments among the three main categories of USDA programs.



### Spring Creek Colony received payments totaling \$1,134,211 from 1995 through 2010

Year	Conservation Subsidies	Disaster Subsidies	Commodity Subsidies	Total USDA Subsidies 1995-2010
1995	\$0	\$0	\$19,965	\$19,965
1996	\$1,780	\$0	\$38,747	\$40,527
1997	\$0	\$1,027	\$34,054	\$35,081
1998	\$0	\$0	\$126,942	\$126,942
1999	\$0	\$5,281	\$89,911	\$95,192
2000	\$0	\$0	\$131,836	\$131,836
2001	\$762	\$27,667	\$54,864	\$83,293
2002	\$15,065	\$33,344	\$50,610	\$99,019
2003	\$0	\$46,385	\$49,649	\$96,034
2004	\$0	\$0	\$50,829	\$50,829
2005	\$0	\$25,766	\$54,786	\$80,552
2006	\$1,500	\$0	\$49,434	\$50,934
2007	\$4,174	\$0	\$33,680	\$37,854
2008	\$0	\$4,490	\$31,649	\$36,139
2009	\$6,774	\$0	\$81,472	\$88,246
2010	\$0	\$26,491	\$35,276	\$61,767
<b>Total</b>	<b>\$30,055</b>	<b>\$170,451</b>	<b>\$933,705</b>	<b>\$1,134,211</b>

### Crop Summary for Spring Creek Colony

Crop	Payments 1995-2010
Wheat Subsidies**	\$412,006
Barley Subsidies**	\$313,921
Dairy Program Subsidies	\$90,024
Livestock Subsidies	\$49,530
Corn Subsidies**	\$17,923
Oat Subsidies**	\$4,647

**Note:** The information on conservation spending for 2010 is incomplete due to missing data from USDA's Natural Resource Conservation Service. Payment data currently are not included for the Environmental Quality Incentives Program, but will be added once NRCS makes it available.

The information provided for the Wetland Reserve Program (WRP) provides an inaccurate picture of how WRP payments are distributed. USDA's Natural Resource Conservation Service uses title companies as intermediaries to finalize wetlands easements under the Wetlands Reserve Program. As a result, the data provided to us shows large



### USDA subsidy information for **Spring Creek Colony**

#### Payment Breakdown

Subsidy Program	Total Payments 1995-2010
<b>Total USDA - Subsidies</b>	<b>\$1,134,211</b>
<i>Subtotal, Farming Subsidies</i>	<b>\$933,705</b>
<i>Subtotal, Conservation Programs</i>	<b>\$30,055</b>
<i>Subtotal, Disaster Payments</i>	<b>\$170,451</b>

#### Commodity subsidy breakdown

Subsidy Program	Total Payments 1995-2010
<b>Subtotal, Farming Subsidies</b>	<b>\$933,705</b>
<i>Total Direct Payments</i>	<b>\$289,253</b>
Direct Program Payments - 2008 Farm Bill	\$90,204
Direct Payment - Barley	\$83,992
Direct Payment - Corn	\$140
Direct Payment - Oats	\$306
Direct Payment - Wheat	\$114,611
<i>Total Counter Cyclical Payments</i>	<b>\$15,476</b>
Counter Cyclical Payment - Barley	\$15,447
Counter Cyclical Payment - Corn	\$29
<i>Production Flexibility Contracts</i>	<b>\$219,730</b>
Production Flexibility - Barley	\$78,484
Production Flexibility - Corn	\$11,195
Production Flexibility - Oats	\$1,189
Production Flexibility - Wheat	\$128,862
<i>Mkt. Loss Asst. - Commodity Crops</i>	<b>\$110,364</b>
Market Loss Assistance - Barley	\$39,321
Market Loss Assistance - Corn	\$6,559
Market Loss Assistance - Oats	\$654
Market Loss Assistance - Wheat	\$63,830
<i>Market Loss Assistance - Non-commodity</i>	<b>\$12,867</b>
Market Loss Assistance - Dairy	\$12,867
<i>Deficiency Payments</i>	<b>\$677</b>
Advance Deficiency - Barley	\$8,612

Deficiency - Barley	\$-8,193
Advance Deficiency - Oats	\$281
Deficiency - Oats	\$-23
Advance Deficiency - Wheat	\$10,438
Deficiency - Wheat	\$-10,438
<b>Loan Deficiency Payments</b>	<b>\$203,201</b>
Loan Deficiency - Barley	\$96,258
Loan Deficiency - Oats	\$2,240
Loan Deficiency - Wheat	\$104,703
<b>Total Dairy Program</b>	<b>\$77,157</b>
Milk Income Loss Contract Payment	\$59,588
Milk Income Loss Transitional Payment	\$11,238
Milk Marketing Fees	\$359
Dairy Economic Loss Assistance Program	\$5,972
<b>Misc. Farm - Subsidies</b>	<b>\$4,980</b>
Small Hog Operation	\$4,980

**Conservation subsidy breakdown**


Subsidy Program	Total Payments 1995-2010
<b>Subtotal, Conservation Programs</b>	<b>\$30,055</b>
<i>Env. Quality Incentive Program</i>	<b>\$12,448</b>
EQIP - Regular	\$12,448
<i>Agricultural Conservation Program</i>	<b>\$1,780</b>
ACP - Regular	\$1,780
<i>Emergency Conservation</i>	<b>\$15,827</b>
Emergency Conservation - Drought	\$15,827

**Disaster subsidy breakdown**

Subsidy Program	Total Payments 1995-2010
<b>Subtotal, Disaster Payments</b>	<b>\$170,451</b>
<i>Supplemental Revenue Assistance Payments Program</i>	<b>\$26,491</b>
SURE - 2010 Recovery Act Payments for Crop Year 2008	\$26,491
<i>Misc. Disaster Payments</i>	<b>\$99,410</b>
Crop Disaster - Program	\$81,991
Non-insured Assistance	\$17,419
<i>Livestock Disaster / Emergency</i>	<b>\$27,598</b>
Emergency Livestock Feed Assistance	\$27,598
Livestock Compensation Program	\$16,952

**Note:** The information on conservation spending for 2010 is incomplete due to missing data from USDA's Natural Resource Conservation Service. Payment data currently are not included for the Environmental Quality Incentives Program, but will be added once NRCS makes it available.

The information provided for the Wetland Reserve Program (WRP) provides an inaccurate picture of how WRP payments are distributed. USDA's Natural Resource Conservation Service uses title companies as intermediaries to finalize wetlands easements under the Wetlands Reserve Program. As a result, the data provided to us shows large

USDA subsidy information for **Spring Creek Colony****Ownership shares for Spring Creek Colony**Pick year for ownership information 

USDA county office/Ownership:

Percentage  
Share\***Spring Creek Colony**  
**ownership information from 2008**  
**Fergus County, Montana**Members Of Spring Creek Colony**100.00%**

\* According to USDA percentage shares for ownership may not reflect share of subsidy payments. EWG review shows that share information on file with USDA may not always equal 100 percent. Most recent percentage share information is from 2008. Future release of this information was barred by law in the 2008 Farm Bill.

Note: The information on conservation spending for 2010 is incomplete due to missing data from USDA's Natural Resource Conservation Service. Payment data currently are not included for the Environmental Quality Incentives Program, but will be added once NRCS makes it available.

The information provided for the Wetland Reserve Program (WRP) provides an inaccurate picture of how WRP payments are distributed. USDA's Natural Resource Conservation Service uses title companies as intermediaries to finalize wetlands easements under the Wetlands Reserve Program. As a result, the data provided to us shows large sums of money going to these title companies. In reality, the payments are ultimately distributed to landowners participating in the WRP.

Unfortunately, NRCS has not provided the data to show where these farms and wetlands are located or which farmers or landowners are enrolling in the program, so EWG is unable to allocate these large sums of money to individuals beyond the title companies. Therefore, these companies skew the conservation rankings and payment concentration, which EWG cannot avoid unless and until NRCS makes available the additional farm attribution data. Therefore, we have not included WRP payments in the 2010 data update.

Finally, we have separated data on farm commodity, disaster and conservation payments in order to provide a more accurate picture of top recipients and concentration of payments among the three main categories of USDA programs.



### USDA subsidy information for **Members Of Spring Creek Colony**

#### Recipient's ownership share(s)

Recipient:	County	Percentage Share*
	Fergus County, Montana	100.0 %
<u>Spring Creek Colony</u>	Fergus County, Montana	100.0 %
	Fergus County, Montana	100.0 %

\* Most recent percentage share information is from 2008. According to USDA percentage shares for ownership may not reflect share of subsidy payments. EWG review shows that share information on file with USDA may not equal 100 percent.

**Note:** The information on conservation spending for 2010 is incomplete due to missing data from USDA's Natural Resource Conservation Service. Payment data currently are not included for the Environmental Quality Incentives Program, but will be added once NRCS makes it available.

The information provided for the Wetland Reserve Program (WRP) provides an inaccurate picture of how WRP payments are distributed. USDA's Natural Resource Conservation Service uses title companies as intermediaries to finalize wetlands easements under the Wetlands Reserve Program. As a result, the data provided to us shows large sums of money going to these title companies. In reality, the payments are ultimately distributed to landowners participating in the WRP.

Unfortunately, NRCS has not provided the data to show where these farms and wetlands are located or which farmers or landowners are enrolling in the program, so EWG is unable to allocate these large sums of money to individuals beyond the title companies. Therefore, these companies skew the conservation rankings and payment concentration, which EWG cannot avoid unless and until NRCS makes available the additional farm attribution data. Therefore, we have not included WRP payments in the 2010 data update.

Finally, we have separated data on farm commodity, disaster and conservation payments in order to provide a more accurate picture of top recipients and concentration of payments among the three main categories of USDA programs.

## EWG Farm Subsidy Database

### Corporate Subsidy Recipients 1 to 1 of 1 in Montana

Business Name: **SPRINGDALE COLONY**

Rank	Name	Location	Subsidy Total 1995-2010
1	<u><a href="#">Springdale Colony</a></u>	White Sulphur Spring, MT 59645	\$ 1,342,585.69

**Note:** The information on conservation spending for 2010 is incomplete due to missing data from USDA's Natural Resource Conservation Service. Payment data currently are not included for the Environmental Quality Incentives Program, but will be added once NRCS makes it available.

The information provided for the Wetland Reserve Program (WRP) provides an inaccurate picture of how WRP payments are distributed. USDA's Natural Resource Conservation Service uses title companies as intermediaries to finalize wetlands easements under the Wetlands Reserve Program. As a result, the data provided to us shows large sums of money going to these title companies. In reality, the payments are ultimately distributed to landowners participating in the WRP.

Unfortunately, NRCS has not provided the data to show where these farms and wetlands are located or which farmers or landowners are enrolling in the program, so EWG is unable to allocate these large sums of money to individuals beyond the title companies. Therefore, these companies skew the conservation rankings and payment concentration, which EWG cannot avoid unless and until NRCS makes available the additional farm attribution data. Therefore, we have not included WRP payments in the 2010 data update.

Finally, we have separated data on farm commodity, disaster and conservation payments in order to provide a more accurate picture of top recipients and concentration of payments among the three main categories of USDA programs.



## USDA subsidy information for **Springdale Colony**

### Addresses on file with USDA for Springdale Colony

USDA county office from which subsidies were paid:	Subsidy Payments 1995-2010	Most recent address on file in USDA county office
Meagher County, Montana	\$1,342,586	Springdale Colony White Sulphur Spring, MT 59645
<b>Total</b>	<b>\$1,342,586</b>	

**Note:** The information on conservation spending for 2010 is incomplete due to missing data from USDA's Natural Resource Conservation Service. Payment data currently are not included for the Environmental Quality Incentives Program, but will be added once NRCS makes it available.

The information provided for the Wetland Reserve Program (WRP) provides an inaccurate picture of how WRP payments are distributed. USDA's Natural Resource Conservation Service uses title companies as intermediaries to finalize wetlands easements under the Wetlands Reserve Program. As a result, the data provided to us shows large sums of money going to these title companies. In reality, the payments are ultimately distributed to landowners participating in the WRP.

Unfortunately, NRCS has not provided the data to show where these farms and wetlands are located or which farmers or landowners are enrolling in the program, so EWG is unable to allocate these large sums of money to individuals beyond the title companies. Therefore, these companies skew the conservation rankings and payment concentration, which EWG cannot avoid unless and until NRCS makes available the additional farm attribution data. Therefore, we have not included WRP payments in the 2010 data update.

Finally, we have separated data on farm commodity, disaster and conservation payments in order to provide a more accurate picture of top recipients and concentration of payments among the three main categories of USDA programs.



**Springdale Colony** received payments totaling **\$1,342,586** from 1995 through 2010

Year	Conservation Subsidies	Disaster Subsidies	Commodity Subsidies	Total USDA Subsidies 1995-2010
1995	\$0	\$0	\$60,811	\$60,811
1996	\$0	\$0	\$61,456	\$61,456
1997	\$0	\$0	\$42,394	\$42,394
1998	\$18,890	\$0	\$133,488	\$152,378
1999	\$0	\$0	\$86,864	\$86,864
2000	\$4,203	\$24,148	\$202,752	\$231,103
2001	\$9,454	\$30,311	\$80,164	\$119,929
2002	\$0	\$31,421	\$74,687	\$106,108
2003	\$0	\$26,650	\$59,565	\$86,215
2004	\$0	\$0	\$74,199	\$74,199
2005	\$0	\$13,490	\$55,126	\$68,616
2006	\$0	\$0	\$51,066	\$51,066
2007	\$0	\$0	\$34,120	\$34,120
2008	\$0	\$6,877	\$31,202	\$38,079
2009	\$0	\$0	\$65,019	\$65,019
2010	\$0	\$0	\$64,228	\$64,228
<b>Total</b>	<b>\$32,547</b>	<b>\$132,897</b>	<b>\$1,177,142</b>	<b>\$1,342,586</b>

**Crop Summary for Springdale Colony**

Crop	Payments 1995-2010
Wheat Subsidies**	\$524,379
Barley Subsidies**	\$355,841
Dairy Program Subsidies	\$132,088
Livestock Subsidies	\$42,791
Wool Subsidies	\$33,821
Sheep Meat Subsidies	\$18,454
Canola Subsidies**	\$10,565
Dry Pea Subsidies	\$4,656
Oat Subsidies**	\$394

USDA subsidy information for **Springdale Colony****Payment Breakdown**

Subsidy Program	Total Payments 1995-2010
<b>Total USDA - Subsidies</b>	<b>\$1,342,586</b>
<i>Subtotal, Farming Subsidies</i>	<b>\$1,177,142</b>
<i>Subtotal, Conservation Programs</i>	<b>\$32,547</b>
<i>Subtotal, Disaster Payments</i>	<b>\$132,897</b>

**Commodity subsidy breakdown**

Subsidy Program	Total Payments 1995-2010
<b>Subtotal, Farming Subsidies</b>	<b>\$1,177,142</b>
<i>Total Direct Payments</i>	<b>\$278,700</b>
Direct Program Payments - 2008 Farm Bill	\$91,485
Direct Payment - Barley	\$87,900
Direct Payment - Canola	\$1,308
Direct Payment - Wheat	\$98,007
<i>Total Counter Cyclical Payments</i>	<b>\$17,092</b>
Counter Cyclical Payment - Barley	\$17,092
Counter Cyclical Payment - Wheat	\$0
<i>Production Flexibility Contracts</i>	<b>\$305,402</b>
Production Flexibility - Barley	\$88,637
Production Flexibility - Oats	\$329
Production Flexibility - Wheat	\$216,436
<i>Mkt. Loss Asst. - Commodity Crops</i>	<b>\$139,888</b>
Market Loss Assistance - Barley	\$12,370
Market Loss Assistance - Oats	\$65
Market Loss Assistance - Wheat	\$127,453
<i>Market Loss Assistance - Non-commodity</i>	<b>\$32,568</b>
Market Loss Assistance - Dairy	\$23,830
Market Loss Assistance - Wool	\$8,738
<i>Oilseed Program</i>	<b>\$968</b>
Oilseed Program - Canola	\$968
<i>Deficiency Payments</i>	<b>\$0</b>
Advance Deficiency - Barley	\$20,418

Deficiency - Barley	\$-20,418
Advance Deficiency - Wheat	\$21,639
Deficiency - Wheat	\$-21,639
<i>Loan Deficiency Payments</i>	<b>\$255,172</b>
Loan Deficiency - Lentils	\$5,419
Loan Deficiency - Barley	\$150,255
Loan Def. Refund - Barley	\$-413
Loan Deficiency - Canola Oil	\$8,289
Loan Deficiency - Wheat	\$86,537
Loan Def. Refund - Wheat	\$-4,054
Loan Deficiency - Wool	\$4,483
Loan Deficiency - Dry Peas	\$4,656
<i>Total Dairy Program</i>	<b>\$108,258</b>
Milk Income Loss Contract Payment	\$77,838
Milk Income Loss Transitional Payment	\$17,682
Milk Marketing Fees	\$3,523
Dairy Economic Loss Assistance Program	\$9,215
<i>Wool And Mohair Programs</i>	<b>\$20,600</b>
Wool Promotion	\$1,589
Wool Program	\$19,011
<i>Total Lamb Payments</i>	<b>\$18,454</b>
Lamb Meat Adjustment - Ewe	\$6,426
Lamb Meat Adjustment - Facility	\$2,255
Lamb Meat Adjustment - Feeder	\$8,373
Lamb Meat Adjustment - Rams	\$1,400
<i>Misc. Farm - Subsidies</i>	<b>\$40</b>
Interest Penalty Payments	\$40

**Conservation subsidy breakdown**

Subsidy Program	Total Payments 1995-2010
<b>Subtotal, Conservation Programs</b>	<b>\$32,547</b>
<i>Env. Quality Incentive Program</i>	<b>\$24,119</b>
EQIP - Regular	\$24,119
<i>Emergency Conservation</i>	<b>\$8,428</b>
Emergency Conservation - Drought	\$8,428

**Disaster subsidy breakdown**

Subsidy Program	Total Payments 1995-2010
<b>Subtotal, Disaster Payments</b>	<b>\$132,897</b>
<i>Misc. Disaster Payments</i>	<b>\$90,106</b>
Crop Disaster - Program	\$83,809
Non-insured Assistance	\$6,297


<i>Livestock Disaster / Emergency</i>	<b>\$17,667</b>
Emergency Livestock Feed Assistance	\$17,667
Livestock Compensation Program	\$25,124

**Note:** The information on conservation spending for 2010 is incomplete due to missing data from USDA's Natural Resource Conservation Service. Payment data currently are not included for the Environmental Quality Incentives Program, but will be added once NRCS makes it available.

The information provided for the Wetland Reserve Program (WRP) provides an inaccurate picture of how WRP payments are distributed. USDA's Natural Resource Conservation Service uses title companies as intermediaries to finalize wetlands easements under the Wetlands Reserve Program. As a result, the data provided to us shows large sums of money going to these title companies. In reality, the payments are ultimately distributed to landowners participating in the WRP.

Unfortunately, NRCS has not provided the data to show where these farms and wetlands are located or which farmers or landowners are enrolling in the program, so EWG is unable to allocate these large sums of money to individuals beyond the title companies. Therefore, these companies skew the conservation rankings and payment concentration, which EWG cannot avoid unless and until NRCS makes available the additional farm attribution data. Therefore, we have not included WRP payments in the 2010 data update.

Finally, we have separated data on farm commodity, disaster and conservation payments in order to provide a more accurate picture of top recipients and concentration of payments among the three main categories of USDA programs.

USDA subsidy information for **Springdale Colony****Ownership shares for Springdale Colony**Pick year for ownership information 

USDA county office/Ownership:	Percentage Share*
<b>Springdale Colony</b>	
<b>ownership information from 2010</b>	
<b>Meagher County, Montana</b>	
<a href="#">Sarah P Wipf</a>	N/A*
<a href="#">Susie J Hofer</a>	N/A*
<a href="#">Mark P Hofer</a>	N/A*
<a href="#">Abigail W Hofer</a>	N/A*
<a href="#">John S Hofer</a>	N/A*
<a href="#">Tabitha J Wipf</a>	N/A*
<a href="#">Jo Anne J Wipf</a>	N/A*
<a href="#">Elizabeth S Hofer</a>	N/A*
<a href="#">Barbara W Hofer</a>	N/A*
<a href="#">Laura J Wipf</a>	N/A*
<a href="#">Sara J Kleinsasser</a>	N/A*
<a href="#">John J Kleinsasser Jr</a>	N/A*
<a href="#">Rachel J Kleinsasser</a>	N/A*
<a href="#">Annie Hofer</a>	N/A*
<a href="#">Susie J Hofer</a>	N/A*
<a href="#">Susie P Wipf</a>	N/A*
<a href="#">Joseph M Wipf</a>	N/A*
<a href="#">Joseph J Hofer</a>	N/A*
<a href="#">John J Hofer</a>	N/A*
<a href="#">David E Wipf</a>	N/A*
<a href="#">Annie P Wipf</a>	N/A*
<a href="#">Christina E Wipf</a>	N/A*
<a href="#">Mary Wipf</a>	N/A*
<a href="#">Sarah Hofer</a>	N/A*
<a href="#">Magdalena Hofer</a>	N/A*
<a href="#">Elizabeth J Hofer</a>	N/A*

<u>Joseph J Wipf</u>	N/A*
<u>Theodore J Hofer</u>	N/A*
<u>Nella J Hofer</u>	N/A*
<u>Dora J Wipf</u>	N/A*
<u>Clara W Hofer</u>	N/A*
<u>Arnie J Hofer</u>	N/A*
<u>Jacob J Wipf</u>	N/A*
<u>Freida J Wipf</u>	N/A*
<u>Theresa S Hofer</u>	N/A*
<u>Lena J Wipf</u>	N/A*
<u>Donna J Wipf</u>	N/A*
<u>Deborah W Hofer</u>	N/A*
<u>Benjamin J Wipf</u>	N/A*
<u>Ida J Wipf</u>	N/A*
<u>Rita P Hofer</u>	N/A*
<u>Bernice E Wipf</u>	N/A*
<u>Katie S Hofer</u>	N/A*
<u>Joshua J Wipf</u>	N/A*
<u>Lydia J Wipf</u>	N/A*
<u>John M Wipf</u>	N/A*
<u>Elizabeth Wipf</u>	N/A*
<u>Susie S Wipf</u>	N/A*
<u>William S Hofer</u>	N/A*
<u>Annie P Hofer</u>	N/A*
<u>Magdalena Wipf</u>	N/A*
<u>Samuel S Hofer</u>	N/A*
<u>Paul P Hofer</u>	N/A*
<u>Dorthy T Wipf</u>	N/A*
<u>Mary P Hofer</u>	N/A*
<u>John P Hofer</u>	N/A*
<u>Sarah P Hofer</u>	N/A*
<u>Peter P Hofer</u>	N/A*
<u>John D Wipf</u>	N/A*
<u>Elizabeth D Wipf</u>	N/A*
<u>Mary D Wipf</u>	N/A*
<u>Rosa W Hofer</u>	N/A*
<u>Elias D Wipf</u>	N/A*
<u>David D Wipf</u>	N/A*
<u>Jonathan D Wipf</u>	N/A*
<u>Margaret J Wipf</u>	N/A*
<u>Justina D Wipf</u>	N/A*
<u>Joseph J Hofer</u>	N/A*

<u>Thomas P Wipf</u>	N/A*
<u>Tobias D Wipf</u>	N/A*
<u>Martha P Wipf</u>	N/A*
<u>Peter J Hofer</u>	N/A*
<u>Susanna S Hofer</u>	N/A*
<u>Jason S Hofer</u>	N/A*
<u>Ida J Wipf</u>	N/A*
<u>Mary J Hofer</u>	N/A*
<u>Matilda J Hofer</u>	N/A*
<u>Linda J Hofer</u>	N/A*
<u>Clara J Hofer</u>	N/A*
<u>Levi W Hofer</u>	N/A*
<u>Jessica J Hofer</u>	N/A*
<u>Peter T Wipf</u>	N/A*
<u>June J Hofer</u>	N/A*
<u>Sara J Wipf</u>	N/A*
<u>Jesse T Wipf</u>	N/A*
<u>John J Wipf</u>	N/A*
<u>Jordan T Wipf</u>	N/A*
<u>Brian J Wipf</u>	N/A*
<u>Jolene J Hofer</u>	N/A*
<u>Michelle T Wipf</u>	N/A*
<u>Bradon J Hofer</u>	N/A*
<u>Jason Wipf</u>	N/A*
<u>David W Hofer</u>	N/A*
<u>Marlene T Wipf</u>	N/A*
<u>Justin T Wipf</u>	N/A*
<u>Elias E Wipf</u>	N/A*
<u>Kenneth E Wipf</u>	N/A*
<u>Nathan E Wipf</u>	N/A*
<u>Leon E Wipf</u>	N/A*
<u>Samuel E Wipf</u>	N/A*
<u>David E Wipf</u>	N/A*
<u>Diane W Hofer</u>	N/A*
<u>Leah J Hofer</u>	N/A*
<u>Phillip J Wipf</u>	N/A*
<u>Kayleen T Wipf</u>	N/A*
<u>Aaron J Wipf</u>	N/A*
<u>Jeffrey T Hofer</u>	N/A*
<u>Darlene P Hofer</u>	N/A*
<u>Delilia T Hofer</u>	N/A*
<u>Darren J Wipf</u>	N/A*

<u>Lillian J Hofer</u>	N/A*
<u>Caleb P Hofer</u>	N/A*
<u>Lisa T Hofer</u>	N/A*
<u>Ruben E Wipf</u>	N/A*
<u>Susanna J Hofer</u>	N/A*
USDA exempted entity from release	N/A*
USDA exempted entity from release	N/A*
USDA exempted entity from release	N/A*
USDA exempted entity from release	N/A*
USDA exempted entity from release	N/A*

\* According to USDA percentage shares for ownership may not reflect share of subsidy payments. EWG review shows that share information on file with USDA may not always equal 100 percent. Most recent percentage share information is from 2008. Future release of this information was barred by law in the 2008 Farm Bill.

**Note:** The information on conservation spending for 2010 is incomplete due to missing data from USDA's Natural Resource Conservation Service. Payment data currently are not included for the Environmental Quality Incentives Program, but will be added once NRCS makes it available.

The information provided for the Wetland Reserve Program (WRP) provides an inaccurate picture of how WRP payments are distributed. USDA's Natural Resource Conservation Service uses title companies as intermediaries to finalize wetlands easements under the Wetlands Reserve Program. As a result, the data provided to us shows large sums of money going to these title companies. In reality, the payments are ultimately distributed to landowners participating in the WRP.

Unfortunately, NRCS has not provided the data to show where these farms and wetlands are located or which farmers or landowners are enrolling in the program, so EWG is unable to allocate these large sums of money to individuals beyond the title companies. Therefore, these companies skew the conservation rankings and payment concentration, which EWG cannot avoid unless and until NRCS makes available the additional farm attribution data. Therefore, we have not included WRP payments in the 2010 data update.

Finally, we have separated data on farm commodity, disaster and conservation payments in order to provide a more accurate picture of top recipients and concentration of payments among the three main categories of USDA programs.

810513519SPIRITUAL ASSEMBLY OF THE BAHAIS OF BUTTE-SILVER BOW		
% MS MARY L SPANGLER	PO BOX 3922	
BUTTE	MT59702-392295080397	199505110001000000101000000
00060 04		8655 BUTTE-SILVER
BOW		
810486629SPIRITUAL ASSEMBLY OF THE BAHAIS OF HELENA		
% SANDI MARISDOTTER	2008 BILLINGS AVE	
HELENA	MT59601-320295080397	196506110001000000501000000
00060 04		6455 HELENA
810464672SPIRITUAL ASSEMBLY OF THE BAHAIS OF MISSOULA		
% MRS ALISON LYNN REINTJES	PO BOX 3385	
MISSOULA	MT59806-338595080397	196506110000000000101000000
00060 12		7155 MISSOULA
810486812SPIRITUAL ASSEMBLY OF THE BAHAIS OF MISSOULA COUNTY		
% MRS KELEEN HARRIS	1704 HUMBLE RD	
MISSOULA	MT59804-509095080397	199505110001000000101000000
00060 04		7150 MISSOULA
COUNTY		
810496064SPIRITUAL ASSEMBLY OF THE BAHAIS OF YELLOWSTONE COUNTY		
% MRS LISA LYNN BENNER	PO BOX 30924	
BILLINGS	MT59107-092495080397	199505110601000000101000000
00060 04		9550 YELLOWSTONE
COUNTY		
260637211SPLASH BUTTE		
% FRANCES DORAN	900 W SILVER ST	
BUTTE	MT59701-155000000331	
200710111500000000010120111220101211020 12000000000104300000000000325		
00000000000325 N32		
201755996SPORT HORSE NORTHWEST		
% LAN LAROCQUE	868 DAKOTA AVE	
MISSOULA	MT59802-966600000531	
20060120000000000010100000020071200020 120000000000000000000000000000		
00000000000000 K26		
810300765SPORTSMANS CONSERVATION CLUB OF HUNTLEY MONTANA		
% JAY FLIGER	2112 S 13TH RD	
BALLANTINE	MT59006-974200000433	
19700420031900000010100000020101200020 120000000000000000000000000000		
00000000000000		
943052266SPRAG POLE MUSEUM INC		
PO BOX 722	ST REGIS	MT59866-
072200000331 19880111606000000010100000020091200020		
12000		
810352330SPRING MEADOW RESOURCES INC		
2850 BROADWATER AVE	HELENA	MT59602-
922000000331 19751011616016603110100000020100666010		
0600000028482520000003416139 0000003412139 P800		
810344550SPRINGDALE COLONY INC		
770 BIRKY RD	WHT SPHR SPGS	MT59645-
950300004031	2009082000000000000101000000	00000 12
X99		
203619802SPRINGHILL ASSISTED LIVING CENTER		
% DAVE MOSS	PO BOX 70	LIMA
MT59739-007000000331 20051211500000000010120091220101000020		
100		
00000000000000 L22		

**MELISSA DATA**[Sign In](#) | [Cart](#) | [Newsletters](#) | [Search](#)

1-800-MELISSA

[Products](#)[Solutions](#)[Downloads & Trials](#)[Support](#)[Resources](#)[Lookups](#)[Contact Us](#)**Free Lookups**[Home](#) > [Lookups](#) > Nonprofit Organization Lookup[Help](#)**How many emails can we add to your list?**

Take our FREE Email Append Data Analysis

**Start now**Enter a 5-digit ZIP Code,  
organization name or 9-digit Tax ID

Submit

**Use this LookUp to:**

- Find information on over 1.4 million registered nonprofit organizations in the United States
- Get organization name, assets, income, and IRS subsection
- Select organization for contact name and address, type of foundation and organization
- Get deductibility status, classification, Form 990, and more

**SPRINGDALE COLONY INC****770 BIRKY RD**Address **WHT SPHR SPGS, MT 59645-9503**[MapG](#) [MapY](#) [MapV](#)IRS Subsection **501(d) - A religious and apostolic association.**Type of Organization **Corporation**Deductibility **Contributions are NOT deductible**Tax I.D. Number **810344550**Exempt Since **08-2009**Form 990 Requirement **Not required to file 990**Classification **Religion Related, Spiritual Development N.E.C.**

Share with others information about this Nonprofit - like the web site, e-mail address, how to donate or any corrections to the data shown.

[Post a Message](#)

Messages

[How Can We Improve this Lookup?](#) | [Send to a Friend](#) | [Lookups Forum](#) | [Terms of Use](#)



## EWG Farm Subsidy Database

Corporate Subsidy Recipients **1** to **1** of **1** in Montana

Business Name: **SURPRISE CREEK HUTTERIAN**

Rank	Name	Location	Subsidy Total 1995-2010
1	<u>Surprise Creek Hutterian Brethern</u>	Stanford, MT 59479	\$ 238,529.51

**Note:** The information on conservation spending for 2010 is incomplete due to missing data from USDA's Natural Resource Conservation Service. Payment data currently are not included for the Environmental Quality Incentives Program, but will be added once NRCS makes it available.

The information provided for the Wetland Reserve Program (WRP) provides an inaccurate picture of how WRP payments are distributed. USDA's Natural Resource Conservation Service uses title companies as intermediaries to finalize wetlands easements under the Wetlands Reserve Program. As a result, the data provided to us shows large sums of money going to these title companies. In reality, the payments are ultimately distributed to landowners participating in the WRP.

Unfortunately, NRCS has not provided the data to show where these farms and wetlands are located or which farmers or landowners are enrolling in the program, so EWG is unable to allocate these large sums of money to individuals beyond the title companies. Therefore, these companies skew the conservation rankings and payment concentration, which EWG cannot avoid unless and until NRCS makes available the additional farm attribution data. Therefore, we have not included WRP payments in the 2010 data update.

Finally, we have separated data on farm commodity, disaster and conservation payments in order to provide a more accurate picture of top recipients and concentration of payments among the three main categories of USDA programs.

USDA subsidy information for **Surprise Creek Hutterian Brethern****Addresses on file with USDA for Surprise Creek Hutterian Brethern**

USDA county office from which subsidies were paid:	Subsidy Payments 1995-2010	Most recent address on file in USDA county office
Judith Basin County, Montana	\$238,530	Surprise Creek Hutterian Brethern Stanford, MT 59479
<b>Total</b>	<b>\$238,530</b>	

**Note:** The information on conservation spending for 2010 is incomplete due to missing data from USDA's Natural Resource Conservation Service. Payment data currently are not included for the Environmental Quality Incentives Program, but will be added once NRCS makes it available.

The information provided for the Wetland Reserve Program (WRP) provides an inaccurate picture of how WRP payments are distributed. USDA's Natural Resource Conservation Service uses title companies as intermediaries to finalize wetlands easements under the Wetlands Reserve Program. As a result, the data provided to us shows large sums of money going to these title companies. In reality, the payments are ultimately distributed to landowners participating in the WRP.

Unfortunately, NRCS has not provided the data to show where these farms and wetlands are located or which farmers or landowners are enrolling in the program, so EWG is unable to allocate these large sums of money to individuals beyond the title companies. Therefore, these companies skew the conservation rankings and payment concentration, which EWG cannot avoid unless and until NRCS makes available the additional farm attribution data. Therefore, we have not included WRP payments in the 2010 data update.

Finally, we have separated data on farm commodity, disaster and conservation payments in order to provide a more accurate picture of top recipients and concentration of payments among the three main categories of USDA programs.



**Surprise Creek Hutterian Brethern** received payments totaling **\$238,530** from 1995 through 2010

Year	Conservation Subsidies	Disaster Subsidies	Commodity Subsidies	Total USDA Subsidies 1995-2010
1995	\$0	\$0	\$0	\$0
1996	\$0	\$0	\$0	\$0
1997	\$0	\$0	\$0	\$0
1998	\$0	\$0	\$0	\$0
1999	\$0	\$0	\$0	\$0
2000	\$0	\$0	\$0	\$0
2001	\$0	\$0	\$0	\$0
2002	\$0	\$0	\$0	\$0
2003	\$0	\$0	\$0	\$0
2004	\$0	\$0	\$0	\$0
2005	\$0	\$0	\$25,603	\$25,603
2006	\$0	\$0	\$38,547	\$38,547
2007	\$0	\$686	\$21,478	\$22,164
2008	\$0	\$12,218	\$26,111	\$38,329
2009	\$0	\$0	\$86,770	\$86,770
2010	\$0	\$0	\$27,117	\$27,117
<b>Total</b>	<b>\$0</b>	<b>\$12,904</b>	<b>\$225,626</b>	<b>\$238,530</b>

**Crop Summary for Surprise Creek Hutterian Brethern**

Crop	Payments 1995-2010
Dairy Program Subsidies	\$87,461
Wheat Subsidies**	\$53,491
Barley Subsidies**	\$28,173
Wool Subsidies	\$15,561
Livestock Subsidies	\$2,555
Dry Pea Subsidies	\$826
Canola Subsidies**	\$191
Oat Subsidies**	\$61
Sunflower Subsidies**	\$8

USDA subsidy information for **Surprise Creek Hutterian Brethern****Payment Breakdown**

Subsidy Program	Total Payments 1995-2010
<b>Total USDA - Subsidies</b>	<b>\$238,530</b>
<i>Subtotal, Farming Subsidies</i>	<b>\$225,626</b>
<i>Subtotal, Disaster Payments</i>	<b>\$12,904</b>

**Commodity subsidy breakdown**

Subsidy Program	Total Payments 1995-2010
<b>Subtotal, Farming Subsidies</b>	<b>\$225,626</b>
<i>Total Direct Payments</i>	<b>\$107,406</b>
Direct Program Payments - 2008 Farm Bill	\$37,298
Direct Payment - Barley	\$16,357
Direct Payment - Canola	\$191
Direct Payment - Oats	\$61
Direct Payment - Sunflower	\$8
Direct Payment - Wheat	\$53,491
<i>Total Counter Cyclical Payments</i>	<b>\$2,304</b>
Counter Cyclical Payment - Barley	\$2,304
<i>Loan Deficiency Payments</i>	<b>\$25,900</b>
Loan Deficiency - Barley	\$9,512
Loan Deficiency - Wool	\$15,561
Loan Deficiency - Dry Peas	\$826
<i>Total Dairy Program</i>	<b>\$87,461</b>
Milk Income Loss Contract Payment	\$71,812
Dairy Economic Loss Assistance Program	\$15,648
<i>Total Livestock Indemnity Program</i>	<b>\$2,555</b>
Livestock Indemnity Payments	\$2,555

**Disaster subsidy breakdown**

Subsidy Program	Total Payments 1995-2010
<b>Subtotal, Disaster Payments</b>	<b>\$12,904</b>
<i>Misc. Disaster Payments</i>	<b>\$12,904</b>
Crop Disaster - Program	\$12,904

USDA subsidy information for **Surprise Creek Hutterian Brethern****Ownership shares for Surprise Creek Hutterian Brethern**

Pick year for ownership information

USDA county office/Ownership:	Percentage Share*
<b>Surprise Creek Hutterian Brethern</b>	
<b>ownership information from 2008</b>	
<b>Judith Basin County, Montana</b>	
<a href="#">Rev Sam Hofer</a>	20.00%
<a href="#">Joseph Stahl Jr</a>	20.00%
<a href="#">Jacob Hofer</a>	20.00%
<a href="#">George Stahl</a>	20.00%
<a href="#">George Hofer Sr</a>	20.00%

\* According to USDA percentage shares for ownership may not reflect share of subsidy payments. EWG review shows that share information on file with USDA may not always equal 100 percent. Most recent percentage share information is from 2008. Future release of this information was barred by law in the 2008 Farm Bill.

**Note:** The information on conservation spending for 2010 is incomplete due to missing data from USDA's Natural Resource Conservation Service. Payment data currently are not included for the Environmental Quality Incentives Program, but will be added once NRCS makes it available.

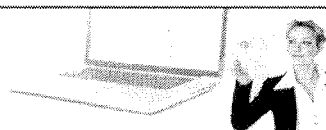
The information provided for the Wetland Reserve Program (WRP) provides an inaccurate picture of how WRP payments are distributed. USDA's Natural Resource Conservation Service uses title companies as intermediaries to finalize wetlands easements under the Wetlands Reserve Program. As a result, the data provided to us shows large sums of money going to these title companies. In reality, the payments are ultimately distributed to landowners participating in the WRP.

Unfortunately, NRCS has not provided the data to show where these farms and wetlands are located or which farmers or landowners are enrolling in the program, so EWG is unable to allocate these large sums of money to individuals beyond the title companies. Therefore, these companies skew the conservation rankings and payment concentration, which EWG cannot avoid unless and until NRCS makes available the additional farm attribution data. Therefore, we have not included WRP payments in the 2010 data update.

Finally, we have separated data on farm commodity, disaster and conservation payments in order to provide a more accurate picture of top recipients and concentration of payments among the three main categories of USDA programs.

**MELISSA DATA**[Sign In](#) | [Cart](#) | [Newsletters](#) | [Search](#)

1-800-MELISSA

[Products](#)[Solutions](#)[Downloads & Trials](#)[Support](#)[Resources](#)[Lookups](#)[Contact Us](#)**Free Lookups**[Home](#) > [Lookups](#) > **Nonprofit Organization Lookup**[Help](#)**Geocoding Solutions**Append Latitude & Longitude Coordinates  
to U.S. & Canadian Addresses**Request Information**Enter a 5-digit ZIP Code,  
organization name or 9-digit Tax ID  
**Use this Lookup to:**

- Find information on over 1.4 million registered nonprofit organizations in the United States
- Get organization name, assets, income, and IRS subsection
- Select organization for contact name and address, type of foundation and organization
- Get deductibility status, classification, Form 990, and more

**SURPRISE CREEK HUTTERIAN BRETHERN INC**

In Care of Name	JEFFREY T SVEEN
	PO BOX 310
Address	STANFORD, MT 59479-0310 <a href="#">MapG</a> <a href="#">MapY</a> <a href="#">MapV</a>
IRS Subsection	501(d) - A religious and apostolic association.
Type of Organization	Corporation
Deductibility	Contributions are NOT deductible
Tax I.D. Number	300264036
Exempt Since	09-2004
Form 990 Requirement	Not required to file 990
Classification	Religion Related, Spiritual Development N.E.C.

Share with others information about this Nonprofit - like the web site, e-mail address, how to donate or any corrections to the data shown.

[Messages](#)[How Can We Improve this Lookup?](#) | [Send to a Friend](#) | [Lookups Forum](#) | [Terms of Use](#)



## EWG Farm Subsidy Database

Corporate Subsidy Recipients **1** to **1** of **1** in Montana

Business Name: **TURNER HUTTERIAN**

Rank	Name	Location	Subsidy Total 1995-2010
1	<u>Turner Hutterian Bretheren Inc</u>	Turner, MT 59542	\$ 1,212,882.58

**Note:** The information on conservation spending for 2010 is incomplete due to missing data from USDA's Natural Resource Conservation Service. Payment data currently are not included for the Environmental Quality Incentives Program, but will be added once NRCS makes it available.

The information provided for the Wetland Reserve Program (WRP) provides an inaccurate picture of how WRP payments are distributed. USDA's Natural Resource Conservation Service uses title companies as intermediaries to finalize wetlands easements under the Wetlands Reserve Program. As a result, the data provided to us shows large sums of money going to these title companies. In reality, the payments are ultimately distributed to landowners participating in the WRP.

Unfortunately, NRCS has not provided the data to show where these farms and wetlands are located or which farmers or landowners are enrolling in the program, so EWG is unable to allocate these large sums of money to individuals beyond the title companies. Therefore, these companies skew the conservation rankings and payment concentration, which EWG cannot avoid unless and until NRCS makes available the additional farm attribution data. Therefore, we have not included WRP payments in the 2010 data update.

Finally, we have separated data on farm commodity, disaster and conservation payments in order to provide a more accurate picture of top recipients and concentration of payments among the three main categories of USDA programs.

USDA subsidy information for **Turner Hutterian Bretheren Inc****Addresses on file with USDA for Turner Hutterian Bretheren Inc**

USDA county office from which subsidies were paid:	Subsidy Payments 1995-2010	Most recent address on file in USDA county office
Blaine County, Montana	\$1,212,883	Turner Hutterian Bretheren Inc Turner, MT 59542
<b>Total</b>	<b>\$1,212,883</b>	

**Note:** The information on conservation spending for 2010 is incomplete due to missing data from USDA's Natural Resource Conservation Service. Payment data currently are not included for the Environmental Quality Incentives Program, but will be added once NRCS makes it available.

The information provided for the Wetland Reserve Program (WRP) provides an inaccurate picture of how WRP payments are distributed. USDA's Natural Resource Conservation Service uses title companies as intermediaries to finalize wetlands easements under the Wetlands Reserve Program. As a result, the data provided to us shows large sums of money going to these title companies. In reality, the payments are ultimately distributed to landowners participating in the WRP.

Unfortunately, NRCS has not provided the data to show where these farms and wetlands are located or which farmers or landowners are enrolling in the program, so EWG is unable to allocate these large sums of money to individuals beyond the title companies. Therefore, these companies skew the conservation rankings and payment concentration, which EWG cannot avoid unless and until NRCS makes available the additional farm attribution data. Therefore, we have not included WRP payments in the 2010 data update.

Finally, we have separated data on farm commodity, disaster and conservation payments in order to provide a more accurate picture of top recipients and concentration of payments among the three main categories of USDA programs.

**Turner Hutterian Bretheren Inc received payments totaling \$1,212,883 from 1995 through 2010**

Year	Conservation Subsidies	Disaster Subsidies	Commodity Subsidies	Total USDA Subsidies 1995-2010
1995	\$5,763	\$0	\$26,109	\$31,872
1996	\$5,135	\$0	\$30,356	\$35,491
1997	\$5,763	\$0	\$60,527	\$66,290
1998	\$5,763	\$0	\$95,869	\$101,632
1999	\$5,763	\$22,976	\$141,685	\$170,424
2000	\$0	\$0	\$123,514	\$123,514
2001	\$1,246	\$4,984	\$120,000	\$126,230
2002	\$0	\$4,032	\$0	\$4,032
2003	\$0	\$53,165	\$42,587	\$95,752
2004	\$0	\$0	\$122,857	\$122,857
2005	\$0	\$61,353	\$15,451	\$76,804
2006	\$0	\$0	\$46,979	\$46,979
2007	\$0	\$0	\$40,000	\$40,000
2008	\$0	\$51,004	\$40,000	\$91,004
2009	\$0	\$0	\$40,002	\$40,002
2010	\$0	\$0	\$40,000	\$40,000
<b>Total</b>	<b>\$29,433</b>	<b>\$197,514</b>	<b>\$985,936</b>	<b>\$1,212,883</b>

**Crop Summary for Turner Hutterian Bretheren Inc**

Crop	Payments 1995-2010
Wheat Subsidies**	\$742,111
Barley Subsidies**	\$160,430
Livestock Subsidies	\$13,919
Canola Subsidies**	\$3,170
Wool Subsidies	\$73

**Note:** The information on conservation spending for 2010 is incomplete due to missing data from USDA's Natural Resource Conservation Service. Payment data currently are not included for the Environmental Quality Incentives Program, but will be added once NRCS makes it available.

The information provided for the Wetland Reserve Program (WRP) provides an inaccurate picture of how WRP payments are distributed. USDA's Natural Resource Conservation Service uses title companies as intermediaries to finalize wetlands easements under the Wetlands Reserve Program. As a result, the data provided to us shows large

## USDA subsidy information for **Turner Hutterian Bretheren Inc**

### Payment Breakdown

Subsidy Program	Total Payments 1995-2010
<b>Total USDA - Subsidies</b>	<b>\$1,212,883</b>
<i>Subtotal, Farming Subsidies</i>	<b>\$985,936</b>
<i>Subtotal, Conservation Programs</i>	<b>\$29,433</b>
<i>Subtotal, Disaster Payments</i>	<b>\$197,514</b>

### Commodity subsidy breakdown

Subsidy Program	Total Payments 1995-2010
<b>Subtotal, Farming Subsidies</b>	<b>\$985,936</b>
<i>Total Direct Payments</i>	<b>\$320,002</b>
Direct Program Payments - 2008 Farm Bill	\$80,002
Direct Payment - Barley	\$23,700
Direct Payment - Wheat	\$216,300
<i>Total Counter Cyclical Payments</i>	<b>\$12,447</b>
Counter Cyclical Payment - Barley	\$12,447
Counter Cyclical Payment - Wheat	\$0
<i>Production Flexibility Contracts</i>	<b>\$294,469</b>
Production Flexibility - Barley	\$60,392
Production Flexibility - Wheat	\$234,077
<i>Mkt. Loss Asst. - Commodity Crops</i>	<b>\$139,888</b>
Market Loss Assistance - Barley	\$25,271
Market Loss Assistance - Wheat	\$114,617
<i>Oilseed Program</i>	<b>\$690</b>
Oilseed Program - Canola	\$690
<i>Deficiency Payments</i>	<b>\$529</b>
Advance Deficiency - Barley	\$7,978
Deficiency - Barley	\$-7,449
Advance Deficiency - Wheat	\$16,279
Deficiency - Wheat	\$-16,279
<i>Loan Deficiency Payments</i>	<b>\$195,595</b>
Loan Deficiency - Barley	\$36,625
Loan Deficiency - Canola Oil	\$2,480

Loan Deficiency - Wheat	\$156,465
Loan Def. Refund - Wheat	\$-48
Loan Deficiency - Wool	\$73
<i>Marketing Loan Gains</i>	<b>\$20,700</b>
Market Gains Farm - Wheat	\$20,700
<i>Misc. Farm - Subsidies</i>	<b>\$1,616</b>
Interest Penalty Payments	\$149
Farm Storage - Barley	\$1,467

**Conservation subsidy breakdown**

Subsidy Program	Total Payments 1995-2010
<b>Subtotal, Conservation Programs</b>	<b>\$29,433</b>
<i>Conservation Reserve Program</i>	<b>\$28,187</b>
CRP - Annual Land Rental	\$28,815
CRP - Haying / Grazing	\$-628
<i>Emergency Conservation</i>	<b>\$1,246</b>
Emergency Conservation - Drought	\$1,246

**Disaster subsidy breakdown**


Subsidy Program	Total Payments 1995-2010
<b>Subtotal, Disaster Payments</b>	<b>\$197,514</b>
<i>Misc. Disaster Payments</i>	<b>\$183,595</b>
Crop Disaster - Program	\$181,364
Quality Losses Program	\$2,231
<i>Livestock Disaster / Emergency</i>	<b>\$7,441</b>
Emergency Livestock Feed Assistance	\$7,441
Livestock Compensation Program	\$6,478

**Note:** The information on conservation spending for 2010 is incomplete due to missing data from USDA's Natural Resource Conservation Service. Payment data currently are not included for the Environmental Quality Incentives Program, but will be added once NRCS makes it available.

The information provided for the Wetland Reserve Program (WRP) provides an inaccurate picture of how WRP payments are distributed. USDA's Natural Resource Conservation Service uses title companies as intermediaries to finalize wetlands easements under the Wetlands Reserve Program. As a result, the data provided to us shows large sums of money going to these title companies. In reality, the payments are ultimately distributed to landowners participating in the WRP.

Unfortunately, NRCS has not provided the data to show where these farms and wetlands are located or which farmers or landowners are enrolling in the program, so EWG is unable to allocate these large sums of money to individuals beyond the title companies. Therefore, these companies skew the conservation rankings and payment concentration, which EWG cannot avoid unless and until NRCS makes available the additional farm attribution data. Therefore, we have not included WRP payments in the 2010 data update.

Finally, we have separated data on farm commodity, disaster and conservation payments in order to provide a more accurate picture of top recipients and concentration of payments among the three main categories of USDA programs.

USDA subsidy information for **Turner Hutterian Bretheren Inc****Ownership shares for Turner Hutterian Bretheren Inc**Pick year for ownership information 

USDA county office/Ownership:	Percentage Share*
<b>Turner Hutterian Bretheren Inc ownership information from 2008 Blaine County, Montana</b>	
<u>Members Of Turner Hutterian Breth</u>	<b>100.00%</b>

\* According to USDA percentage shares for ownership may not reflect share of subsidy payments. EWG review shows that share information on file with USDA may not always equal 100 percent. Most recent percentage share information is from 2008. Future release of this information was barred by law in the 2008 Farm Bill.

**Note:** The information on conservation spending for 2010 is incomplete due to missing data from USDA's Natural Resource Conservation Service. Payment data currently are not included for the Environmental Quality Incentives Program, but will be added once NRCS makes it available.

The information provided for the Wetland Reserve Program (WRP) provides an inaccurate picture of how WRP payments are distributed. USDA's Natural Resource Conservation Service uses title companies as intermediaries to finalize wetlands easements under the Wetlands Reserve Program. As a result, the data provided to us shows large sums of money going to these title companies. In reality, the payments are ultimately distributed to landowners participating in the WRP.

Unfortunately, NRCS has not provided the data to show where these farms and wetlands are located or which farmers or landowners are enrolling in the program, so EWG is unable to allocate these large sums of money to individuals beyond the title companies. Therefore, these companies skew the conservation rankings and payment concentration, which EWG cannot avoid unless and until NRCS makes available the additional farm attribution data. Therefore, we have not included WRP payments in the 2010 data update.

Finally, we have separated data on farm commodity, disaster and conservation payments in order to provide a more accurate picture of top recipients and concentration of payments among the three main categories of USDA programs.

### USDA subsidy information for **Members Of Turner Hutterian Breth**

#### Recipient's ownership share(s)

Recipient:	County	Percentage Share*
	Blaine County, Montana	100.0 %
<u>Turner Hutterian Bretheren Inc</u>	Blaine County, Montana	100.0 %
	Blaine County, Montana	100.0 %

\* Most recent percentage share information is from 2008. According to USDA percentage shares for ownership may not reflect share of subsidy payments. EWG review shows that share information on file with USDA may not equal 100 percent.

**Note:** The information on conservation spending for 2010 is incomplete due to missing data from USDA's Natural Resource Conservation Service. Payment data currently are not included for the Environmental Quality Incentives Program, but will be added once NRCS makes it available.

The information provided for the Wetland Reserve Program (WRP) provides an inaccurate picture of how WRP payments are distributed. USDA's Natural Resource Conservation Service uses title companies as intermediaries to finalize wetlands easements under the Wetlands Reserve Program. As a result, the data provided to us shows large sums of money going to these title companies. In reality, the payments are ultimately distributed to landowners participating in the WRP.

Unfortunately, NRCS has not provided the data to show where these farms and wetlands are located or which farmers or landowners are enrolling in the program, so EWG is unable to allocate these large sums of money to individuals beyond the title companies. Therefore, these companies skew the conservation rankings and payment concentration, which EWG cannot avoid unless and until NRCS makes available the additional farm attribution data. Therefore, we have not included WRP payments in the 2010 data update.

Finally, we have separated data on farm commodity, disaster and conservation payments in order to provide a more accurate picture of top recipients and concentration of payments among the three main categories of USDA programs.



## EWG Farm Subsidy Database

### Corporate Subsidy Recipients 1 to 1 of 1 in Montana

Business Name: **ZENITH**

Rank	Name	Location	Subsidy Total 1995-2010
1	<u>Zenith Colony Inc</u>	Cut Bank, MT 59427	\$ 506,884.65

**Note:** The information on conservation spending for 2010 is incomplete due to missing data from USDA's Natural Resource Conservation Service. Payment data currently are not included for the Environmental Quality Incentives Program, but will be added once NRCS makes it available.

The information provided for the Wetland Reserve Program (WRP) provides an inaccurate picture of how WRP payments are distributed. USDA's Natural Resource Conservation Service uses title companies as intermediaries to finalize wetlands easements under the Wetlands Reserve Program. As a result, the data provided to us shows large sums of money going to these title companies. In reality, the payments are ultimately distributed to landowners participating in the WRP.

Unfortunately, NRCS has not provided the data to show where these farms and wetlands are located or which farmers or landowners are enrolling in the program, so EWG is unable to allocate these large sums of money to individuals beyond the title companies. Therefore, these companies skew the conservation rankings and payment concentration, which EWG cannot avoid unless and until NRCS makes available the additional farm attribution data. Therefore, we have not included WRP payments in the 2010 data update.

Finally, we have separated data on farm commodity, disaster and conservation payments in order to provide a more accurate picture of top recipients and concentration of payments among the three main categories of USDA programs.



### USDA subsidy information for **Zenith Colony Inc**

#### Addresses on file with USDA for Zenith Colony Inc

USDA county office from which subsidies were paid:	Subsidy Payments 1995-2010	Most recent address on file in USDA county office
Glacier County, Montana	\$506,885	Zenith Colony Inc Cut Bank, MT 59427
<b>Total</b>	<b>\$506,885</b>	

**Note:** The information on conservation spending for 2010 is incomplete due to missing data from USDA's Natural Resource Conservation Service. Payment data currently are not included for the Environmental Quality Incentives Program, but will be added once NRCS makes it available.

The information provided for the Wetland Reserve Program (WRP) provides an inaccurate picture of how WRP payments are distributed. USDA's Natural Resource Conservation Service uses title companies as intermediaries to finalize wetlands easements under the Wetlands Reserve Program. As a result, the data provided to us shows large sums of money going to these title companies. In reality, the payments are ultimately distributed to landowners participating in the WRP.

Unfortunately, NRCS has not provided the data to show where these farms and wetlands are located or which farmers or landowners are enrolling in the program, so EWG is unable to allocate these large sums of money to individuals beyond the title companies. Therefore, these companies skew the conservation rankings and payment concentration, which EWG cannot avoid unless and until NRCS makes available the additional farm attribution data. Therefore, we have not included WRP payments in the 2010 data update.

Finally, we have separated data on farm commodity, disaster and conservation payments in order to provide a more accurate picture of top recipients and concentration of payments among the three main categories of USDA programs.



### Zenith Colony Inc received payments totaling \$506,885 from 1995 through 2010

Year	Conservation Subsidies	Disaster Subsidies	Commodity Subsidies	Total USDA Subsidies 1995-2010
1995	\$0	\$0	\$0	\$0
1996	\$0	\$0	\$0	\$0
1997	\$0	\$0	\$0	\$0
1998	\$0	\$0	\$0	\$0
1999	\$0	\$0	\$0	\$0
2000	\$0	\$0	\$0	\$0
2001	\$0	\$0	\$0	\$0
2002	\$0	\$0	\$0	\$0
2003	\$0	\$0	\$0	\$0
2004	\$0	\$0	\$0	\$0
2005	\$25,026	\$0	\$77,024	\$102,050
2006	\$42,101	\$0	\$61,322	\$103,423
2007	\$40,967	\$0	\$40,000	\$80,967
2008	\$15,783	\$69,152	\$40,000	\$124,935
2009	\$4,702	\$0	\$40,000	\$44,702
2010	\$3,965	\$0	\$46,842	\$50,807
<b>Total</b>	<b>\$132,544</b>	<b>\$69,152</b>	<b>\$305,189</b>	<b>\$506,885</b>

### Crop Summary for Zenith Colony Inc

Crop	Payments 1995-2010
Wheat Subsidies**	\$129,238
Barley Subsidies**	\$89,108

**Note:** The information on conservation spending for 2010 is incomplete due to missing data from USDA's Natural Resource Conservation Service. Payment data currently are not included for the Environmental Quality Incentives Program, but will be added once NRCS makes it available.

The information provided for the Wetland Reserve Program (WRP) provides an inaccurate picture of how WRP payments are distributed. USDA's Natural Resource Conservation Service uses title companies as intermediaries to finalize wetlands easements under the Wetlands Reserve Program. As a result, the data provided to us shows large sums of money going to these title companies. In reality, the payments are ultimately distributed to landowners participating in the WRP.

Unfortunately, NRCS has not provided the data to show where these farms and wetlands are located or which farmers or landowners are enrolling in the program, so EWG is unable to allocate these large sums of money to individuals beyond the title companies. Therefore, these companies skew the conservation rankings and payment concentration, which EWG cannot avoid unless and until NRCS makes available the additional farm attribution data. Therefore, we have not included WRP payments in the 2010 data update.

USDA subsidy information for **Zenith Colony Inc****Payment Breakdown**

Subsidy Program	Total Payments 1995-2010
<b>Total USDA - Subsidies</b>	<b>\$506,885</b>
<i>Subtotal, Farming Subsidies</i>	<b>\$305,189</b>
<i>Subtotal, Conservation Programs</i>	<b>\$132,544</b>
<i>Subtotal, Disaster Payments</i>	<b>\$69,152</b>

**Commodity subsidy breakdown**

Subsidy Program	Total Payments 1995-2010
<b>Subtotal, Farming Subsidies</b>	<b>\$305,189</b>
<i>Total Direct Payments</i>	<b>\$246,842</b>
Direct Program Payments - 2008 Farm Bill	\$86,842
Direct Payment - Barley	\$30,762
Direct Payment - Wheat	\$129,238
<i>Total Counter Cyclical Payments</i>	<b>\$10,285</b>
Counter Cyclical Payment - Barley	\$10,285
<i>Loan Deficiency Payments</i>	<b>\$48,061</b>
Loan Deficiency - Barley	\$48,061
<i>Misc. Farm - Subsidies</i>	<b>\$1</b>
Interest Penalty Payments	\$1

**Conservation subsidy breakdown**

Subsidy Program	Total Payments 1995-2010
<b>Subtotal, Conservation Programs</b>	<b>\$132,544</b>
<i>Conservation Reserve Program</i>	<b>\$132,544</b>
CRP - Annual Land Rental	\$133,816
CRP - Haying / Grazing	\$-1,272

**Disaster subsidy breakdown**

Subsidy Program	Total Payments 1995-2010
<b>Subtotal, Disaster Payments</b>	<b>\$69,152</b>
<i>Misc. Disaster Payments</i>	<b>\$69,152</b>
Crop Disaster - Program	\$69,152



## USDA subsidy information for **Zenith Colony Inc**

### Ownership shares for Zenith Colony Inc

Pick year for ownership information

USDA county office/Ownership:	Percentage Share*
Zenith Colony Inc ownership information from 2010 Glacier County, Montana	
<a href="#">Jonathan D Waldner</a>	N/A*
<a href="#">Dorothea Entz</a>	N/A*
<a href="#">Paul J Entz</a>	N/A*
<a href="#">Katherine M Entz</a>	N/A*
<a href="#">Rebecca J Wurz</a>	N/A*
<a href="#">Anna W Wurz</a>	N/A*
<a href="#">Joseph J Wurz</a>	N/A*
<a href="#">Jacob J Waldner</a>	N/A*
<a href="#">Andrew J Waldner</a>	N/A*
<a href="#">Walter J Wurz</a>	N/A*
<a href="#">Gloria A Waldner</a>	N/A*
<a href="#">Jason P Entz</a>	N/A*
<a href="#">Marianne E Entz</a>	N/A*
<a href="#">Peter Entz</a>	N/A*
<a href="#">David M Entz</a>	N/A*
<a href="#">Mike J Wurz</a>	N/A*
<a href="#">Miriam J Wurz</a>	N/A*
<a href="#">Edward J Entz</a>	N/A*
<a href="#">Hilda Waldner</a>	N/A*
<a href="#">Katrina A Wurz</a>	N/A*
<a href="#">Julianna W Wurz</a>	N/A*
<a href="#">Caroline Wurz</a>	N/A*
<a href="#">Stephen W Wurz</a>	N/A*
<a href="#">Theresa W Wurz</a>	N/A*
<a href="#">Kayla A Waldner</a>	N/A*
<a href="#">Simon J Waldner</a>	N/A*

<u>Jared A Waldner</u>	N/A*
<u>Jason J Wurz</u>	N/A*
<u>Joseph J Wurz</u>	N/A*
<u>Aaron A Waldner</u>	N/A*
<u>Linda J Waldner</u>	N/A*
<u>Helen H Waldner</u>	N/A*
<u>Jonas J Waldner</u>	N/A*
<u>Amanda J Waldner</u>	N/A*
<u>Diane J Waldner</u>	N/A*

\* According to USDA percentage shares for ownership may not reflect share of subsidy payments. EWG review shows that share information on file with USDA may not always equal 100 percent. Most recent percentage share information is from 2008. Future release of this information was barred by law in the 2008 Farm Bill.

**Note:** The information on conservation spending for 2010 is incomplete due to missing data from USDA's Natural Resource Conservation Service. Payment data currently are not included for the Environmental Quality Incentives Program, but will be added once NRCS makes it available.

The information provided for the Wetland Reserve Program (WRP) provides an inaccurate picture of how WRP payments are distributed. USDA's Natural Resource Conservation Service uses title companies as intermediaries to finalize wetlands easements under the Wetlands Reserve Program. As a result, the data provided to us shows large sums of money going to these title companies. In reality, the payments are ultimately distributed to landowners participating in the WRP.

Unfortunately, NRCS has not provided the data to show where these farms and wetlands are located or which farmers or landowners are enrolling in the program, so EWG is unable to allocate these large sums of money to individuals beyond the title companies. Therefore, these companies skew the conservation rankings and payment concentration, which EWG cannot avoid unless and until NRCS makes available the additional farm attribution data. Therefore, we have not included WRP payments in the 2010 data update.

Finally, we have separated data on farm commodity, disaster and conservation payments in order to provide a more accurate picture of top recipients and concentration of payments among the three main categories of USDA programs.