

List of Evidence for Hutterite colonies as USDA farm subsidy recipients  
Subject: Heartland Hutterian Brethren Inc, Lake Benton, MN 56149  
Location by State: Minnesota  
Form and Version of Evidence:  
[Short Form for Original Evidence (Long Form) and New Evidence 1]  
Timeframe of Evidence as Webpages: 2009-2011  
Status: Confirmed as EO (Exempt Organization)  
Topic: Short Form includes Findings from Original Evidence (Long Form) and  
New Evidence 1, and Conclusion from New Evidence 1

Section SF. List of Short Form of Evidence for OE and NE 1

- 1) EWG 'Search Result' and 'Farm Location(s)' webpages (10/20/2009) for data 1995-2006  
Both from Environmental Working Group's Farm Subsidy Database - [<http://farm.ewg.org/>]  
Evidence included: yes
- 2) EWG 'Ownership Interest(s)' webpage(s) (10/20/2009) for data 1995-2006  
From Environmental Working Group's Farm Subsidy Database - [<http://farm.ewg.org/>]  
Evidence included: yes
- 3) EWG dataset (7/20/2011) for data 1995-2010  
From Environmental Working Group's Farm Subsidy Database - [<http://farm.ewg.org/>]  
Evidence included: yes
- 4) IRS Exempt Organization (EO) data webpage(s) from [[www.irs.gov](http://www.irs.gov)]  
EO File URL: [<http://www.irs.gov/taxstats/charitablestats/article/0,,id=97186,00.html>]  
EO File Date (for OE): (12/7/2009 is date EO file was downloaded from IRS website to CD)  
EO File Date (for NE 1): (not included)  
Evidence included: yes
- 5) IRS EO/BMF Data Decoded page  
Evidence included: yes
- 6) Melissa Data webpage(s) (10/20/2009) and (7/20/2011) from [[www.melissadata.com](http://www.melissadata.com)]  
Evidence included: yes
- 7) Manta data webpage(s) (10/20/2009) from [[www.manta.com](http://www.manta.com)]  
Evidence included: yes
- 8) Hutterite Surnames page  
Evidence included: yes
- 9) Hutterite Directory webpage(s) (10/20/2009)  
From [[www.cedrontech.com](http://www.cedrontech.com)], or link from [[www.hutterites.org](http://www.hutterites.org)]  
Evidence included: yes
- 10) Contact Information page(s)  
Evidence included: yes
- 11) MapQuest webpage(s) (5/25/2011) from [[www.mapquest.com](http://www.mapquest.com)]  
Evidence included: yes

Note:

All evidence has been introduced for the original evidence (long form) and/or the new evidence 1, except the 'Contact Information' page and the 'MapQuest' webpage which are introduced as evidence for the 'Short Form of Evidence for OE and NE 1'.

List of Evidence for Hutterite colonies as USDA farm subsidy recipients

Subject: Heartland Hutterian Brethren Inc, Lake Benton, MN 56149

Location by State: Minnesota

Status: Confirmed as EO (Exempt Organization)

Topic: Findings, for Section LF and Section SF, Version 1

Findings (for Section LF and Section SF, Version 1):

1:

Heartland Hutterian Brethren Inc is confirmed as a Hutterite colony and member of the Hutterian Brethren Church based on name and data for ID as a Hutterite colony.

Data for Heartland Hutterian Brethren Inc for ID as a Hutterite colony:

1) Name: Heartland Hutterian Brethren Inc, Lake Benton, MN 56149

2) EWG/USDA ownership shares data, Hutterite Surnames: Hofer, Wipf

3) FEEFHS/Hutterite colony data:

[Year Founded | Colony Name | Location: City (MN) | Parent Colony | Leading Surnames

1996 | Heart Land | Lake Benton | Plainview | Wipf]

4) Rocky Cape Christian Community/Hutterite colony data:

[Heartland, MN, 1996 - present (note: Schmiedeleut)]

5) Hutterite Directory (for Heartland Colony):

[Heartland, 2171 - 100th Ave, Lake Benton, MN 56149]

2:

IRS EO/BMF data found and the organization name and location are the same as the USDA business name and location.

USDA Business Name and Location:

[Heartland Hutterian Brethren Inc, Lake Benton, MN 56149]

IRS Organization Name and Location:

[Heartland Hutterian Brethren Inc, Lake Benton, MN 56149-1122]

The IRC section is '501(d) Apostolic and religious organization' and the ruling date is 10/1995.

Heartland Hutterian Brethren Inc, Lake Benton, MN 56149, is confirmed as a tax-exempt nonprofit religious organization during the timeframe 1995-2006 when the organization received USDA farm subsidies.

3:

Comparison of IRS EO/BMF data with NCCS, Melissa Data, and TaxExemptWorld.com data:

[Data Date: (IRS 12/7/2009), (NCCS, Melissa Data, and TaxExemptWorld.com, 10/20/2009)]

[Data: EIN, Organization Name, Location by State, IRC Section, Ruling Date]

[931052252, Heartland Hutterian Brethren Inc, MN, 501(d), 10/1995 = IRS]

[931052252, Heartland Hutterian Brethren Inc, MN, 501(d), 1995..... = NCCS]

[931052252, Heartland Hutterian Brethren Inc, MN, 501(d), 10-1995 = Melissa Data]

[no data....., Heartland Hutterian Brethren Inc, MN, 501(d), 10/1995 = TaxExemptWorld.com]

Comparison of data demonstrates all data is the same basic data.

4:

IRS EO/BMF data indicates the organization is not required to file Form 990. Data from NCCS, Melissa Data, and TaxExemptWorld.com for the same organization indicates the organization is not required to file Form 990. The organization is classified as IRC section 501(d) and files Form 1065 so the data for Form 990 is correct.

NCCS data for organization name is the same as the IRS organization name and indicates the organization is active as of 10/20/09.

5:

Different Business Names:

1) Manta data: Heartland Colony also does business as Heartland Hutterian Brethren Inc

6:

Dataset for timeframe 1995-2006:

Identity of USDA farm subsidy recipient:

[Heartland Hutterian Brethren Inc, Lake Benton, MN 56149]

USDA farm subsidy total:

1) Subsidy Total 1995-2006: \$1,011,088.08 (note: exact calculation)

2) Subsidy Payments 1995-2006 Total: \$1,011,088 (note: rounded off calculation)

IRS EO/BMF data (12/7/2009):

1) IRC Section:

a) IRM Table: 501(d) Apostolic and religious organization

b) SOI Table: 501(d) Apostolic and Religious Org.

2) Ruling Date: 10/1995

Operating As: Hutterite colony as a tax-exempt nonprofit religious organization

> Findings for Section NE 1, for:

[Heartland Hutterian Brethren Inc, Lake Benton, MN 56149]

(page 1)

1:

Refer to the original findings for Section LF for data. This findings includes updated data.

2:

Comparison of USDA farm subsidy data for timeframe 1995-2006 and timeframe 1995-2010 shows that [Heartland Hutterian Brethren Inc, Lake Benton, MN 56149] is the same identity as [Heartland Hutterian Brethren, Lake Benton, MN 56149] so the data record for both organizations can be considered to be for the same organization. This information can be used for investigation.

3(a):

The Melissa Data webpage data for [Heartland Hutterian Brethren Inc] is the same for the new data from 7/20/2011 and the original data from 10/20/2009 found in Section LF.

3(b):

Comparison of Melissa Data data with [IRS EO/BMF data and Melissa Data data as original data from Section LF]:

[Data Date: (Melissa Data 7/20/2011), (IRS 12/7/2009, Melissa Data 10/20/2009)]

[Data: EIN, Organization Name, Location by State, IRC Section, Ruling Date]

[931052252, Heartland Hutterian Brethren Inc, MN, 501(d), 10/1995 = IRS]

[931052252, Heartland Hutterian Brethren Inc, MN, 501(d), 10-1995 = Melissa Data]

[931052252, Heartland Hutterian Brethren Inc, MN, 501(d), 10-1995 = Melissa Data (7/20/2011)]

Comparison of data demonstrates all data is the same basic data.

3(c):

Melissa Data address comparison:

[Heartland Hutterian Brethren Inc, 2171 100th Ave, Lake Benton, MN 56149-1122 = Melissa Data (10/20/2009)]

[Heartland Hutterian Brethren Inc, 2171 100th Ave, Lake Benton, MN 56149-1122 = Melissa Data (7/20/2011)]

Comparison of data demonstrates the addresses are the same.

3(d):

The Employer Identification Number (EIN) from 3(b) is the same for all 3 datasets so the data is for the same organization. The comparison data for Melissa Data in 3(b) and 3(c) is the same from 7/20/2011 and 10/20/2009.

4:

Update for findings for IRS data (Section LF and Section NE 1):

a:

The IRS organization name and location are the same as the USDA business name and location. The IRC section is '501(d) Apostolic and religious organization' and the ruling date is 10/1995. Heartland Hutterian Brethren Inc, Lake Benton, MN 56149, is confirmed as a tax-exempt nonprofit religious organization during the timeframe 1995-2010 when the organization received USDA farm subsidies.

b:

'Summary' data shows that the farm subsidy payment data for the calculation of the USDA farm subsidy total for 1995-2010 applies to 1999-2010.

> Findings for Section NE 1, for:

[Heartland Hutterian Brethren Inc, Lake Benton, MN 56149]

(page 2)

5:

Melissa Data can be established as a valid data source for IRS data from [Findings for documentation as evidence for Hutterite colonies as USDA farm subsidy recipients] that will establish that there are 100 organizations with IRS EO/BMF data and Melissa Data data with the same IRS Employer Identification Number (EIN) and Melissa Data data that can be converted to decoded IRS EO/BMF data, so the data is for the same organization.

> Conclusion for Section NE 1, for:

[Heartland Hutterian Brethren Inc, Lake Benton, MN 56149]

(page 1)

1:

This conclusion is a updated version of the original conclusion for Section LF so refer to this updated conclusion as the new conclusion for Section LF. This conclusion includes a updated dataset with data for timeframe 1995-2010.

2(a):

Heartland Hutterian Brethren Inc, Lake Benton, MN 56149, is confirmed as a tax-exempt nonprofit religious organization during the timeframe 1995-2010 when the organization received USDA farm subsidies. The organization's IRC section is '501(d) Apostolic and religious organization' and the ruling date is 10/1995.

2(b):

'Summary' data shows that the farm subsidy payment data for the calculation of the USDA farm subsidy total for 1995-2010 applies to 1999-2010.

3:

Dataset for timeframe 1995-2010:

Identity of USDA farm subsidy recipient:

[Heartland Hutterian Brethren Inc, Lake Benton, MN 56149]

USDA farm subsidy total:

1) Subsidy Total 1995-2010: \$1,178,562.34 (note: exact calculation)

2) Subsidy Payments 1995-2010 Total: \$1,178,562 (note: rounded off calculation)

3) 'Summary' data shows that the farm subsidy payment data for the calculation of the USDA farm subsidy total for 1995-2010 applies to 1999-2010. So, a calculation for financial compensation will not need to consider the ruling date 10/1995.

IRS EO/BMF data (12/7/2009):

1) Name:

[Heartland Hutterian Brethren Inc, 2171 100th Ave, Lake Benton, MN 56149-1122]

2) Employer Identification Number (EIN): 931052252

3) IRC Section: 501(d) Apostolic and religious organization

4) Ruling Date: 10/1995

Melissa Data (7/20/2011):

1) Name:

[Heartland Hutterian Brethren Inc, 2171 100th Ave, Lake Benton, MN 56149-1122]

2) Tax I.D. Number: 931052252

3) IRS Subsection: 501(d) - A religious and apostolic association.

4) Exempt Since: 10-1995

Operating As: Hutterite colony as a tax-exempt nonprofit religious organization

> Conclusion for Section NE 1, for:

[Heartland Hutterian Brethren Inc, Lake Benton, MN 56149]

(page 2)

4:

Identification data:

Name: Heartland Hutterian Brethren Inc, Lake Benton, MN 56149

Data from Section LF and Section NE 1:

IRS EO/BMF data and Melissa Data:

[Heartland Hutterian Brethren Inc, 2171 100th Ave, Lake Benton, MN 56149-1122]

Hutterite Directory (for Heartland Colony):

[Heartland, 2171 - 100th Ave, Lake Benton, MN 56149]

Different Business Names:

- 1) Manta data: Heartland Colony also does business as Heartland Hutterian Brethren Inc  
[Heartland Colony, 2171 100th Ave, Lake Benton, MN 56149-1122]

# environmental working group's Farm Subsidy Database



177,702,063

## EWG Farm Subsidy Database

### **NEW 2007 Direct Payment Subsidy Overview**

#### **NEW Press Release**

[2008 Farm Subsidy Database Update](#)

[2008 Summary](#)

[2008 News Release](#)

Corporate Subsidy Recipients 1 to 2 of 2 in Minnesota

Business Name: HEARTLAND HUTTERIAN

Rank	Name	Location	Subsidy Total 1995-2006
1	<a href="#">Heartland Hutterian Brethren Inc</a>	Lake Benton, MN 56149	\$ 1,011,088.08
2	<a href="#">Heartland Hutterian Brethren</a>	Lake Benton, MN 56149	\$ 258,369.81

[EWG's Policy Analysis Database](#)

**READ MULCH**  
Updates, commentary,  
& your feedback

**NEW!**

- [Full Disclosure: Who really benefits from federal farm subsidies](#)
- [What's in the new Farm Bill 2007 Database?](#)
- [New Farm Bill Web Site Generates Media Storm](#)

[Congressional District Ranking](#)

#### **Related Content**

Farms Receiving Government

Payments

Speech: Farm Policy For The Rest of

Us

# environmental working group's Farm Subsidy Database



**177,703,507**

## **NEW 2007 Direct Payment Subsidy Overview**

### **NEW Press Release**

[2008 Farm Subsidy Database Update](#)

[2008 Summary](#)

[2008 News Release](#)

[EWG's Policy Analysis Database](#)

**READ MULCH**  
Updates, commentary,  
& your feedback

**NEW!**

- [Full Disclosure: Who really benefits from federal farm subsidies](#)
- [What's in the new Farm Bill 2007 Database?](#)
- [New Farm Bill Web Site Generates Media Storm](#)

[Congressional District Ranking](#)

## **Related Content**

Farms Receiving Government

Payments

Speech: Farm Policy For The Rest of

Us

## **USDA subsidy information for Heartland Hutterian Brethren Inc**

**Heartland Hutterian Brethren Inc:** [Summary](#) | [Programs](#) | [Programs by year](#)  
| [Farm Location\(s\)](#) | [Ownership Interest\(s\)](#)

## **Addresses on file with USDA for Heartland Hutterian Brethren Inc**

USDA county office from which subsidies were paid:	Subsidy Payments 1995-2006	Most recent address on file in USDA county office
Lincoln County, Minnesota	\$111,677	Heartland Hutterian Brethren Inc Lake Benton, MN 56149
Pipestone County, Minnesota	\$871,328	Heartland Hutterian Brethren Inc Lake Benton, MN 56149
Brookings County, South Dakota	\$28,083	Heartland Hutterian Brethren Inc Lake Benton, MN 56149
<b>Total</b>	<b>\$1,011,088</b>	

# environmental working group's Farm Subsidy Database



177,703,572

## NEW 2007 Direct Payment Subsidy Overview

### NEW Press Release

[2008 Farm Subsidy Database Update](#)

[2008 Summary](#)

[2008 News Release](#)

[EWG's Policy Analysis Database](#)

**READ MULCH**  
Updates, commentary,  
& your feedback

**NEW!**

- [Full Disclosure: Who really benefits from federal farm subsidies](#)
- [What's in the new Farm Bill 2007 Database?](#)
- [New Farm Bill Web Site Generates Media Storm](#)

[Congressional District Ranking](#)

## Related Content

Farms Receiving Government

Payments

Speech: Farm Policy For The Rest of

Us

## USDA subsidy information for Heartland Hutterian Brethren Inc

**Heartland Hutterian Brethren Inc:** [Summary](#) | [Programs](#) | [Programs by year](#) | [Farm Location\(s\)](#) | [Ownership Interest\(s\)](#)

## Ownership shares for Heartland Hutterian Brethren Inc

Pick year for ownership information

USDA county office/Ownership:	Percentage Share*
<b>Heartland Hutterian Brethren Inc ownership information from 2006 Lincoln County, Minnesota</b>	
<a href="#">Pauline Wipf</a> Lake Benton, MN 56149	1.54 %
<a href="#">Kayla Wipf</a> Leola, SD 57456	1.54 %
<a href="#">Juanita Wipf</a> Leola, SD 57456	1.54 %
<a href="#">Shanna Wipf</a> Leola, SD 57456	1.54 %
<a href="#">Brian Wipf</a> Leola, SD 57456	1.54 %
<a href="#">Leah Wipf</a> Lake Benton, MN 56149	1.54 %
<a href="#">Alvin Wipf</a> Lake Benton, MN 56149	1.54 %
<a href="#">Mark J Wipf</a> Lake Benton, MN 56149	1.54 %
<a href="#">Maryann L Wipf</a> Leola, SD 57456	1.54 %
<a href="#">Robert L Wipf</a> Leola, SD 57456	1.54 %
<a href="#">Jerry J Wipf</a> Lake Benton, MN 56149	1.54 %
<a href="#">Johnny J Wipf</a> Leola, SD 57456	1.44 %

Related News Coverage

FSA Fact Sheets

**Sign up to receive email updates  
from EWG**

Sign Me Up

<u>Marian J Wipf</u> Lake Benton, MN 56149	1.54 %
<u>Elmer D Wipf</u> Leola, SD 57456	1.54 %
<u>Joey Wipf</u> Lake Benton, MN 56149	1.54 %
<u>Johnny J Wipf</u> Leola, SD 57456	1.54 %
<u>Richard J Wipf</u> Leola, SD 57456	1.54 %
<u>Katie Wipf</u> Leola, SD 57456	1.54 %
<u>Marion Wipf</u> Lake Benton, MN 56149	1.54 %
<u>Daniel D Wipf Jr</u> Lake Benton, MN 56149	1.54 %
<u>Leah Wipf</u> Lake Benton, MN 56149	1.54 %
<u>Helen Hofer</u> Ipswich, SD 57451	1.54 %
<u>Rebecca Wipf</u> Lake Benton, MN 56149	1.54 %
<u>Rachel Wipf</u> Leola, SD 57456	1.54 %
<u>Julie Wipf</u> Leola, SD 57456	1.54 %
<u>Jessica Wipf</u> Leola, SD 57456	1.54 %
<u>Anna Wipf</u> Leola, SD 57456	1.54 %
<u>Paulina D Wipf</u> Leola, SD 57456	1.54 %
<u>Joseph J Wipf Sr</u> Lake Benton, MN 56149	1.54 %
<u>Dave D Wipf</u> Leola, SD 57456	1.54 %
<u>Amber C Wipf</u> Lake Benton, MN 56149	1.54 %
<u>Mariah Wipf</u> Lake Benton, MN 56149	1.54 %
<u>Heidi Wipf</u> Lake Benton, MN 56149	1.54 %
<u>Thelma Wipf</u> Lake Benton, MN 56149	1.54 %
<u>Lyndon Wipf</u> Lake Benton, MN 56149	1.54 %

<u>Michael Terry Wipf</u> Lake Benton, MN 56149	1.54 %
<u>David Michael Wipf</u> Lake Benton, MN 56149	1.54 %
<u>Joseph Robert Wipf</u> Lake Benton, MN 56149	1.54 %
<u>Alma Wipf</u> Lake Benton, MN 56149	1.54 %
<u>Tamara Wipf</u> Lake Benton, MN 56149	1.54 %
<u>Alyssa Wipf</u> Lake Benton, MN 56149	1.54 %
<u>Kari Wipf</u> Lake Benton, MN 56149	1.54 %
<u>Aimee Wipf</u> Lake Benton, MN 56149	1.54 %
<u>Liana Wipf</u> Lake Benton, MN 56149	1.54 %
<u>Christophe R Wipf</u> Lake Benton, MN 56149	1.54 %
<u>Tara Wipf</u> Lake Benton, MN 56149	1.54 %
<u>Daniel Wipf</u> Lake Benton, MN 56149	1.54 %
<u>Shawn Wipf</u> Lake Benton, MN 56149	1.54 %
<u>Karleah Wipf</u> Lake Benton, MN 56149	1.54 %
<u>Brenda Wipf</u> Lake Benton, MN 56149	1.54 %
<u>Megan L Wipf</u> Lake Benton, MN 56149	1.54 %
<u>Jaden Wipf</u> Lake Benton, MN 56149	1.54 %
<u>Myra Wipf</u> Lake Benton, MN 56149	1.54 %
<u>Jared B Wipf</u> Lake Benton, MN 56149	1.54 %
<u>Branden G Wipf</u> Lake Benton, MN 56149	1.54 %
<u>Loren E Wipf</u> Lake Benton, MN 56149	1.54 %
<u>Rachel S Wipf</u> Lake Benton, MN 56149	1.54 %
<u>Josiah Wipf</u> Lake Benton, MN 56149	1.54 %

<u>Caleb E Wipf</u> Lake Benton, MN 56149	1.54 %
<u>Markus K Wipf</u> Lake Benton, MN 56149	1.54 %
<u>Jeraine Wipf</u> Lake Benton, MN 56149	1.54 %
<u>Janerra G Wipf</u> Lake Benton, MN 56149	1.54 %
<u>Evelyn N Wipf</u> Lake Benton, MN 56149	1.54 %
<u>Jacobi Wipf</u> Lake Benton, MN 56149	1.54 %
<u>Marlene Wipf</u> Lake Benton, MN 56149	1.54 %

---

**Heartland Hutterian Brethren Inc  
ownership information from 2006  
Pipestone County, Minnesota**

<u>Pauline Wipf</u> Lake Benton, MN 56149	1.54 %
<u>Kayla Wipf</u> Leola, SD 57456	1.54 %
<u>Juanita Wipf</u> Leola, SD 57456	1.54 %
<u>Shanna Wipf</u> Leola, SD 57456	1.54 %
<u>Brian Wipf</u> Leola, SD 57456	1.54 %
<u>Leah Wipf</u> Lake Benton, MN 56149	1.54 %
<u>Alvin Wipf</u> Lake Benton, MN 56149	1.54 %
<u>Mark J Wipf</u> Lake Benton, MN 56149	1.54 %
<u>Maryann L Wipf</u> Leola, SD 57456	1.54 %
<u>Robert L Wipf</u> Leola, SD 57456	1.54 %
<u>Jerry J Wipf</u> Lake Benton, MN 56149	1.54 %
<u>Johnny J Wipf</u> Leola, SD 57456	1.44 %
<u>Marian J Wipf</u> Lake Benton, MN 56149	1.54 %
<u>Elmer D Wipf</u> Leola, SD 57456	1.54 %

<u>Joey Wipf</u> Lake Benton, MN 56149	1.54 %
<u>Johnny J Wipf</u> Leola, SD 57456	1.54 %
<u>Richard J Wipf</u> Leola, SD 57456	1.54 %
<u>Katie Wipf</u> Leola, SD 57456	1.54 %
<u>Marion Wipf</u> Lake Benton, MN 56149	1.54 %
<u>Daniel D Wipf Jr</u> Lake Benton, MN 56149	1.54 %
<u>Leah Wipf</u> Lake Benton, MN 56149	1.54 %
<u>Helen Hofer</u> Ipswich, SD 57451	1.54 %
<u>Rebecca Wipf</u> Lake Benton, MN 56149	1.54 %
<u>Rachel Wipf</u> Leola, SD 57456	1.54 %
<u>Julie Wipf</u> Leola, SD 57456	1.54 %
<u>Jessica Wipf</u> Leola, SD 57456	1.54 %
<u>Anna Wipf</u> Leola, SD 57456	1.54 %
<u>Paulina D Wipf</u> Leola, SD 57456	1.54 %
<u>Joseph J Wipf Sr</u> Lake Benton, MN 56149	1.54 %
<u>Dave D Wipf</u> Leola, SD 57456	1.54 %
<u>Amber C Wipf</u> Lake Benton, MN 56149	1.54 %
<u>Mariah Wipf</u> Lake Benton, MN 56149	1.54 %
<u>Heidi Wipf</u> Lake Benton, MN 56149	1.54 %
<u>Thelma Wipf</u> Lake Benton, MN 56149	1.54 %
<u>Lyndon Wipf</u> Lake Benton, MN 56149	1.54 %
<u>Michael Terry Wipf</u> Lake Benton, MN 56149	1.54 %
<u>David Michael Wipf</u> Lake Benton, MN 56149	1.54 %

<u>Joseph Robert Wipf</u> Lake Benton, MN 56149	1.54 %
<u>Alma Wipf</u> Lake Benton, MN 56149	1.54 %
<u>Tamara Wipf</u> Lake Benton, MN 56149	1.54 %
<u>Alyssa Wipf</u> Lake Benton, MN 56149	1.54 %
<u>Kari Wipf</u> Lake Benton, MN 56149	1.54 %
<u>Aimee Wipf</u> Lake Benton, MN 56149	1.54 %
<u>Liana Wipf</u> Lake Benton, MN 56149	1.54 %
<u>Christophe R Wipf</u> Lake Benton, MN 56149	1.54 %
<u>Tara Wipf</u> Lake Benton, MN 56149	1.54 %
<u>Daniel Wipf</u> Lake Benton, MN 56149	1.54 %
<u>Lana Wipf</u> Lake Benton, MN 56149	0.00 %
<u>Shawn Wipf</u> Lake Benton, MN 56149	1.54 %
<u>Karleah Wipf</u> Lake Benton, MN 56149	1.54 %
<u>Brenda Wipf</u> Lake Benton, MN 56149	1.54 %
<u>Megan L Wipf</u> Lake Benton, MN 56149	1.54 %
<u>Jaden Wipf</u> Lake Benton, MN 56149	1.54 %
<u>Myra Wipf</u> Lake Benton, MN 56149	1.54 %
<u>Jared B Wipf</u> Lake Benton, MN 56149	1.54 %
<u>Branden G Wipf</u> Lake Benton, MN 56149	1.54 %
<u>Loren E Wipf</u> Lake Benton, MN 56149	1.54 %
<u>Rachel S Wipf</u> Lake Benton, MN 56149	1.54 %
<u>Josiah Wipf</u> Lake Benton, MN 56149	1.54 %
<u>Caleb E Wipf</u> Lake Benton, MN 56149	1.54 %

<u>Markus K Wipf</u> Lake Benton, MN 56149	<b>1.54 %</b>
<u>Jeraine Wipf</u> Lake Benton, MN 56149	<b>1.54 %</b>
<u>Janerra G Wipf</u> Lake Benton, MN 56149	<b>1.54 %</b>
<u>Evelyn N Wipf</u> Lake Benton, MN 56149	<b>1.54 %</b>
<u>Jacobi Wipf</u> Lake Benton, MN 56149	<b>1.54 %</b>
<u>Marlene Wipf</u> Lake Benton, MN 56149	<b>1.54 %</b>
<hr/>	
<b>Heartland Hutterian Brethren Inc ownership information from 2002 Brookings County, South Dakota</b>	
<b>100.00 %</b>	

\* According to USDA percentage shares for ownership may not reflect share of subsidy payments. EWG review shows that share information on file with USDA may not always equal 100 percent.

[www.ewg.org](http://www.ewg.org) is the website for both Environmental Working Group and EWG Action Fund

Copyright 2009, Environmental Working Group. All Rights Reserved.

Headquarters 1436 U St. N.W., Suite 100 | Washington, DC 20009 || [Contact Us](#)  
California Office 1904 Franklin St. Suite 703 | Oakland, CA 94612 || [Contact Us](#)





## EWG Farm Subsidy Database

Corporate Subsidy Recipients 1 to 2 of 2 in Minnesota

Business Name: **HEARTLAND HUTTERIAN BRETHREN**

Rank	Name	Location	Subsidy Total 1995-2010
1	<a href="#">Heartland Hutterian Brethren Inc</a>	Lake Benton, MN 56149	\$ 1,178,562.34
2	<a href="#">Heartland Hutterian Brethren</a>	Lake Benton, MN 56149	\$ 260,003.81

**Note:** The information on conservation spending for 2010 is incomplete due to missing data from USDA's Natural Resource Conservation Service. Payment data currently are not included for the Environmental Quality Incentives Program, but will be added once NRCS makes it available.

The information provided for the Wetland Reserve Program (WRP) provides an inaccurate picture of how WRP payments are distributed. USDA's Natural Resource Conservation Service uses title companies as intermediaries to finalize wetlands easements under the Wetlands Reserve Program. As a result, the data provided to us shows large sums of money going to these title companies. In reality, the payments are ultimately distributed to landowners participating in the WRP.

Unfortunately, NRCS has not provided the data to show where these farms and wetlands are located or which farmers or landowners are enrolling in the program, so EWG is unable to allocate these large sums of money to individuals beyond the title companies. Therefore, these companies skew the conservation rankings and payment concentration, which EWG cannot avoid unless and until NRCS makes available the additional farm attribution data. Therefore, we have not included WRP payments in the 2010 data update.

Finally, we have separated data on farm commodity, disaster and conservation payments in order to provide a more accurate picture of top recipients and concentration of payments among the three main categories of USDA programs.



### USDA subsidy information for **Heartland Hutterian Brethren Inc**

#### Addresses on file with USDA for Heartland Hutterian Brethren Inc

USDA county office from which subsidies were paid:	Subsidy Payments 1995-2010	Most recent address on file in USDA county office
Lincoln County, Minnesota	\$121,813	Heartland Hutterian Brethren Inc Lake Benton, MN 56149
Pipestone County, Minnesota	\$1,028,667	Heartland Hutterian Brethren Inc Lake Benton, MN 56149
Brookings County, South Dakota	\$28,083	Heartland Hutterian Brethren Inc Lake Benton, MN 56149
<b>Total</b>	<b>\$1,178,562</b>	

**Note:** The information on conservation spending for 2010 is incomplete due to missing data from USDA's Natural Resource Conservation Service. Payment data currently are not included for the Environmental Quality Incentives Program, but will be added once NRCS makes it available.

The information provided for the Wetland Reserve Program (WRP) provides an inaccurate picture of how WRP payments are distributed. USDA's Natural Resource Conservation Service uses title companies as intermediaries to finalize wetlands easements under the Wetlands Reserve Program. As a result, the data provided to us shows large sums of money going to these title companies. In reality, the payments are ultimately distributed to landowners participating in the WRP.

Unfortunately, NRCS has not provided the data to show where these farms and wetlands are located or which farmers or landowners are enrolling in the program, so EWG is unable to allocate these large sums of money to individuals beyond the title companies. Therefore, these companies skew the conservation rankings and payment concentration, which EWG cannot avoid unless and until NRCS makes available the additional farm attribution data. Therefore, we have not included WRP payments in the 2010 data update.

Finally, we have separated data on farm commodity, disaster and conservation payments in order to provide a more accurate picture of top recipients and concentration of payments among the three main categories of USDA programs.



**Heartland Hutterian Brethren Inc received payments totaling \$1,178,562 from 1995 through 2010**

Year	Conservation Subsidies	Disaster Subsidies	Commodity Subsidies	Total USDA Subsidies 1995-2010
1995	\$0	\$0	\$0	\$0
1996	\$0	\$0	\$0	\$0
1997	\$0	\$0	\$0	\$0
1998	\$0	\$0	\$0	\$0
1999	\$512	\$0	\$112,270	\$112,782
2000	\$512	\$16,206	\$174,934	\$191,652
2001	\$1,352	\$15,563	\$174,329	\$191,244
2002	\$2,764	\$0	\$36,054	\$38,818
2003	\$912	\$7,882	\$61,696	\$70,490
2004	\$1,423	\$0	\$105,641	\$107,064
2005	\$1,122	\$26,685	\$194,250	\$222,057
2006	\$1,122	\$0	\$75,859	\$76,981
2007	\$1,122	\$0	\$40,000	\$41,122
2008	\$1,122	\$3,275	\$40,000	\$44,397
2009	\$938	\$0	\$40,082	\$41,020
2010	\$935	\$0	\$40,000	\$40,935
<b>Total</b>	<b>\$13,836</b>	<b>\$69,611</b>	<b>\$1,095,115</b>	<b>\$1,178,562</b>

**Crop Summary for Heartland Hutterian Brethren Inc**

Crop	Payments 1995-2010
Corn Subsidies**	\$796,128
Soybean Subsidies**	\$195,723
Wheat Subsidies**	\$22,232
Livestock Subsidies	\$1,226
Oat Subsidies**	\$673
Barley Subsidies**	\$206
Sorghum Subsidies**	\$18

**Counties where payments were made from**

County	Subsidy Payments 1995-2010
Lincoln County, Minnesota	\$121,813

Pipestone County, Minnesota	\$1,028,667
Brookings County, South Dakota	\$28,083
<b>Total</b>	<b>\$1,178,562</b>

**Note:** The information on conservation spending for 2010 is incomplete due to missing data from USDA's Natural Resource Conservation Service. Payment data currently are not included for the Environmental Quality Incentives Program, but will be added once NRCS makes it available.

The information provided for the Wetland Reserve Program (WRP) provides an inaccurate picture of how WRP payments are distributed. USDA's Natural Resource Conservation Service uses title companies as intermediaries to finalize wetlands easements under the Wetlands Reserve Program. As a result, the data provided to us shows large sums of money going to these title companies. In reality, the payments are ultimately distributed to landowners participating in the WRP.

Unfortunately, NRCS has not provided the data to show where these farms and wetlands are located or which farmers or landowners are enrolling in the program, so EWG is unable to allocate these large sums of money to individuals beyond the title companies. Therefore, these companies skew the conservation rankings and payment concentration, which EWG cannot avoid unless and until NRCS makes available the additional farm attribution data. Therefore, we have not included WRP payments in the 2010 data update.

Finally, we have separated data on farm commodity, disaster and conservation payments in order to provide a more accurate picture of top recipients and concentration of payments among the three main categories of USDA programs.

USDA subsidy information for **Heartland Hutterian Brethren Inc****Payment Breakdown**

Subsidy Program	Total Payments 1995-2010
<b>Total USDA - Subsidies</b>	<b>\$1,178,562</b>
<i>Subtotal, Farming Subsidies</i>	<b>\$1,095,115</b>
<i>Subtotal, Conservation Programs</i>	<b>\$13,836</b>
<i>Subtotal, Disaster Payments</i>	<b>\$69,611</b>

**Commodity subsidy breakdown**

Subsidy Program	Total Payments 1995-2010
<b>Subtotal, Farming Subsidies</b>	<b>\$1,095,115</b>
<i>Total Direct Payments</i>	<b>\$331,988</b>
Direct Program Payments - 2008 Farm Bill	\$80,082
Direct Payment - Corn	\$200,940
Direct Payment - Soybeans	\$43,657
Direct Payment - Wheat	\$7,309
<i>Total Counter Cyclical Payments</i>	<b>\$90,377</b>
Counter Cyclical Payment - Corn	\$90,377
Counter Cyclical Payment - Soybeans	\$0
Counter Cyclical Payment - Wheat	\$0
<i>Production Flexibility Contracts</i>	<b>\$99,089</b>
Production Flexibility - Barley	\$66
Production Flexibility - Corn	\$92,533
Production Flexibility - Oats	\$233
Production Flexibility - Sorghum	\$9
Production Flexibility - Wheat	\$6,248
<i>Mkt. Loss Asst. - Commodity Crops</i>	<b>\$115,366</b>
Market Loss Assistance - Barley	\$140
Market Loss Assistance - Corn	\$106,319
Market Loss Assistance - Oats	\$440
Market Loss Assistance - Sorghum	\$9
Market Loss Assistance - Wheat	\$8,458
<i>Oilseed Program</i>	<b>\$26,752</b>
Oilseed Program - Soybean	\$26,752

<i>Loan Deficiency Payments</i>	<b>\$307,226</b>
Loan Deficiency - Corn	\$189,072
Loan Deficiency - Soybeans	\$124,715
Loan Def. Refund - Soybean	\$-6,779
Loan Deficiency - Wheat	\$217
<i>Total Commodity Certificates</i>	<b>\$43,300</b>
Commodity Certificates - Corn	\$43,300
<i>Marketing Loan Gains</i>	<b>\$80,965</b>
Market Gains Farm - Corn	\$73,588
Market Gains Warehouse - Soybeans	\$7,378
<i>Misc. Farm - Subsidies</i>	<b>\$52</b>
Interest Penalty Payments	\$52

**Conservation subsidy breakdown**

<b>Subsidy Program</b>	<b>Total Payments 1995-2010</b>
<b>Subtotal, Conservation Programs</b>	<b>\$13,836</b>
<i>Conservation Reserve Program</i>	<b>\$13,836</b>
CRP - Annual Land Rental	\$10,760
CRP - Practice Incentive	\$958
CRP - Signing Incentive	\$1,246
CRP - Cost Share	\$1,198
CRP - Failure To Comply	\$-326

**Disaster subsidy breakdown**

<b>Subsidy Program</b>	<b>Total Payments 1995-2010</b>
<b>Subtotal, Disaster Payments</b>	<b>\$69,611</b>
<i>Misc. Disaster Payments</i>	<b>\$68,385</b>
Crop Disaster - Program	\$68,385
Livestock Compensation Program	\$1,226

**Note:** The information on conservation spending for 2010 is incomplete due to missing data from USDA's Natural Resource Conservation Service. Payment data currently are not included for the Environmental Quality Incentives Program, but will be added once NRCS makes it available.

The information provided for the Wetland Reserve Program (WRP) provides an inaccurate picture of how WRP payments are distributed. USDA's Natural Resource Conservation Service uses title companies as intermediaries to finalize wetlands easements under the Wetlands Reserve Program. As a result, the data provided to us shows large sums of money going to these title companies. In reality, the payments are ultimately distributed to landowners participating in the WRP.

Unfortunately, NRCS has not provided the data to show where these farms and wetlands are located or which farmers or landowners are enrolling in the program, so EWG is unable to allocate these large sums of money to individuals beyond the title companies. Therefore, these companies skew the conservation rankings and payment concentration, which EWG cannot avoid unless and until NRCS makes available the additional farm attribution data. Therefore, we have not included WRP payments in the 2010 data update.

Finally, we have separated data on farm commodity, disaster and conservation payments in order to provide a more accurate picture of top recipients and concentration of payments among the three main categories of USDA programs.

USDA subsidy information for **Heartland Hutterian Brethren Inc****Ownership shares for Heartland Hutterian Brethren Inc**

Pick year for ownership information

USDA county office/Ownership:	Percentage Share*
Heartland Hutterian Brethren Inc ownership information from 2010 Pipestone County, Minnesota	
<a href="#">Pauline Wipf</a>	N/A*
<a href="#">Jordan Wipf</a>	N/A*
<a href="#">Naomi Wipf</a>	N/A*
<a href="#">Waylon Wipf</a>	N/A*
<a href="#">Kayla Wipf</a>	N/A*
<a href="#">Janita Wipf</a>	N/A*
<a href="#">Valerie Wipf</a>	N/A*
<a href="#">Shanna Wipf</a>	N/A*
<a href="#">Brian Wipf</a>	N/A*
<a href="#">Duane Wipf</a>	N/A*
<a href="#">Darren Wipf</a>	N/A*
<a href="#">Donny Wipf</a>	N/A*
<a href="#">Anna Wipf</a>	N/A*
<a href="#">Leah Wipf</a>	N/A*
<a href="#">Alvin Wipf</a>	N/A*
<a href="#">Steve Wipf</a>	N/A*
<a href="#">Mark J Wipf</a>	N/A*
<a href="#">Anna Marie Wipf</a>	N/A*
<a href="#">Maryann L Wipf</a>	N/A*
<a href="#">Robert Wipf</a>	N/A*
<a href="#">Jerry J Wipf</a>	N/A*
<a href="#">Micheal Wipf</a>	N/A*
<a href="#">Marian J Wipf</a>	N/A*
<a href="#">Elmer Wipf</a>	N/A*
<a href="#">Joey Wipf</a>	N/A*
<a href="#">Johnny Wipf Jr</a>	N/A*

---

<u>Gene Wipf</u>	N/A*
<u>Kathy Wipf</u>	N/A*
<u>Marion Wipf</u>	N/A*
<u>Leah Wipf</u>	N/A*
<u>Helen Hofer</u>	N/A*
<u>Rebecca Wipf</u>	N/A*
<u>Julia Wipf</u>	N/A*
<u>Angela Wipf</u>	N/A*
<u>Jessica Wipf</u>	N/A*
<u>Anna Z Wipf</u>	N/A*
<u>Paulina D Wipf</u>	N/A*
<u>Joseph J Wipf Sr</u>	N/A*
<u>George Wipf</u>	N/A*
<u>Amber C Wipf</u>	N/A*
<u>Mariah Wipf</u>	N/A*
<u>Heidi Wipf</u>	N/A*
<u>Lyndon Wipf</u>	N/A*
<u>David Michael Wipf</u>	N/A*
<u>Maria Wipf</u>	N/A*
<u>Joseph Robert Wipf</u>	N/A*
<u>Alma Wipf</u>	N/A*
<u>Crystal Wipf</u>	N/A*
<u>Alyssa Wipf</u>	N/A*
<u>Kari Wipf</u>	N/A*
<u>Aimee Wipf</u>	N/A*
<u>Liana Wipf</u>	N/A*
<u>Christophe R Wipf</u>	N/A*
<u>Tara Wipf</u>	N/A*
<u>Lana Wipf</u>	N/A*
<u>Shawn Wipf</u>	N/A*
<u>Stephen M Wipf</u>	N/A*
<u>Karleah Wipf</u>	N/A*
<u>Megan L Wipf</u>	N/A*
<u>Jaden Wipf</u>	N/A*
<u>Jared B Wipf</u>	N/A*
<u>Branden G Wipf</u>	N/A*
<u>Loren E Wipf</u>	N/A*
<u>Caleb E Wipf</u>	N/A*
<u>Markus K Wipf</u>	N/A*
<u>Jeraine Wipf</u>	N/A*
<u>Evelyn N Wipf</u>	N/A*
<u>Jacobi Wipf</u>	N/A*

<u>Marlene Wipf</u>	N/A*
<u>Rhonda Wipf</u>	N/A*
<u>Curtis Wipf</u>	N/A*
<u>Shaleigh Wipf</u>	N/A*
<u>Rachelle Wipf</u>	N/A*
<u>Cory Wipf</u>	N/A*
<u>Collin Wipf</u>	N/A*
<u>Kendra Wipf</u>	N/A*
<u>Bethany Wipf</u>	N/A*
<u>Katrina Wipf</u>	N/A*
<u>Hannah Wipf</u>	N/A*
<u>John Wipf</u>	N/A*
<u>Phoebe Wipf</u>	N/A*
<u>Kaden Wipf</u>	N/A*

\* According to USDA percentage shares for ownership may not reflect share of subsidy payments. EWG review shows that share information on file with USDA may not always equal 100 percent. Most recent percentage share information is from 2008. Future release of this information was barred by law in the 2008 Farm Bill.

**Note:** The information on conservation spending for 2010 is incomplete due to missing data from USDA's Natural Resource Conservation Service. Payment data currently are not included for the Environmental Quality Incentives Program, but will be added once NRCS makes it available.

The information provided for the Wetland Reserve Program (WRP) provides an inaccurate picture of how WRP payments are distributed. USDA's Natural Resource Conservation Service uses title companies as intermediaries to finalize wetlands easements under the Wetlands Reserve Program. As a result, the data provided to us shows large sums of money going to these title companies. In reality, the payments are ultimately distributed to landowners participating in the WRP.

Unfortunately, NRCS has not provided the data to show where these farms and wetlands are located or which farmers or landowners are enrolling in the program, so EWG is unable to allocate these large sums of money to individuals beyond the title companies. Therefore, these companies skew the conservation rankings and payment concentration, which EWG cannot avoid unless and until NRCS makes available the additional farm attribution data. Therefore, we have not included WRP payments in the 2010 data update.

Finally, we have separated data on farm commodity, disaster and conservation payments in order to provide a more accurate picture of top recipients and concentration of payments among the three main categories of USDA programs.

410845601HEARTLAND CREDIT UNION  
 5500 S ROBERT TRL INVER GROVE MN55077-144507081491  
 19440920026305992250100000020081297010 1200000783369240000005482179  
 0000005482179  
 260899440HEARTLAND DEMOCRACY CENTER  
 % TOM VELLENGA 2091 LINCOLN AVE ST PAUL  
 MN55105-104400000331 200809115000000000101000000 00010 12  
 W20  
 020656066HEARTLAND HEALTH CARE FUND  
 % WILSON-MCSHANE CORPORATION 3001 METRO DR STE 500  
 BLOOMINGTON MN55425-161700000931  
 20030520000000000020100000020081288010 1200000277900170000019906217  
 0000019906217 Y43  
 411820761HEARTLAND HOME HEALTH  
 PO BOX Q ANNANDALE MN55302-016700000331  
 199607116995179000132000000 97000 09  
 Z99  
 411283137HEARTLAND HOMES - OPTIONS IN COMMUNITY LIVING INC  
 PO BOX 214 PARK RAPIDS MN56470-021400000331  
 19770711616039900010100000020081266010 1200000012974690000002012738  
 0000002009756  
 931052252HEARTLAND HUTTERIAN BRETHREN INC  
 % JOE WIPF JR PRES 2171 100TH AVE LAKE  
 BENTON MN56149-112200004031 199510200029000000101000000  
 00000 12  
 411666451HEARTLAND INDUSTRIES OF DAWSON INC  
 4121 45TH AVE SE WILLMAR MN56201-966100000331  
 19950211614900000010100000020081256010 1200000009650380000003000862  
 0000002982559 P99Z  
 410216534HEARTLAND MUTUAL INSURANCE COMPANY  
 161 3RD AVE SO LISMORE MN56155-000000000931  
 198802200253000000101000000 95010 12  
 260053713HEARTLAND OLD CATHOLIC CHURCH  
 % JAMES R JUDD BOARD PRESIDENT 1624 LUELLA ST N ST PAUL  
 MN55119-301700000337 200706115000000000101000000 00130 12  
 X20  
 261369701HEARTLAND RACING PIGEON FEDERATION INC  
 6837 RUSSELL AVE S RICHFIELD MN55423-202300000731  
 2009012000000000000101000000 00010 12  
 N50  
 411723574HEARTLAND RANCH INC  
 185 HIGHWAY 9 NE BENSON MN56215-116000000331  
 19921111532600000010100000020071266010 1200000012425430000001052365  
 0000001047521 P70P  
 411945577HEARTLAND SNO-GOERS  
 % TIM BERNATZ 63798 230TH ST AUSTIN  
 MN55912-647300000431 20000420000000000050100000020080543010  
 0500000001198430000000034165 0000000034165 N68  
 411726358HEARTLAND STORYTELLERS INC  
 1206 W RICHWAY DR ALBERT LEA MN56007-205700000331  
 199301115092000000132000000 98020 12  
 B94ZC-O BEVERLY JACKSON  
 411312390HEARTLAND SYMPHONY ORCHESTRA  
 PO BOX 241 LITTLE FALLS MN56345-024100000332  
 19791011509011999510100000020080633010 0600000000442840000000055339  
 0000000052839

IRS EO/BMF Data Decoded

Subject: Heartland Hutterian Brethren Inc, Lake Benton, MN 56149

EO/BMF Name: Heartland Hutterian Brethren Inc

EO File URL: [http://www.irs.gov/taxstats/charitablestats/article/0,,id=97186,00.html]

EO File by State: Minnesota

EO File MS-DOS Name: EO\_MN.EXE

EO File Updated: 11-12-09

EO File Date: 12/7/09

EO File EO/BMF Data Sequence:

931052252HEARTLAND HUTTERIAN BRETHREN INC

% JOE WIPF JR PRES

2171 100TH AVE

LAKE

BENTON

MN56149-112200004031

199510200029000000101000000

00000 12

Note:

The font of this data sequence, as Times New Roman, is not the same as the font of the original EO/BMF data so the spacing steps of this data sequence may be different from the original EO/BMF data. The data fields are the same as the original EO/BMF data except for %.

EO/BMF data sequence decoded for EIN, IRC Section, and Ruling Date:

<u>EO/BMF Data</u>	<u>EO/BMF Data Field</u>
931052252	Employer Identification Number (EIN)
HEARTLAND HUTTERIAN BRETHREN INC	Primary Name of Organization
% JOE WIPF JR PRES	In Care of Name (CO) (if present)
2171 100TH AVE	Street Address
LAKE BENTON	City
MN	State
56149-1122	Zip Code (note: Zip+4)
0000	Group Exemption Number (GEN)
40	Subsection Code (SS)
3	Affiliation Code (AF)
1	Classification Code(s) (CL)
199510	Ruling Date (RD)

<u>Subsection Code</u>	<u>Classification Code</u>	<u>IRC Section (IRM Table)</u>	<u>IRC Section (SOI Table)</u>
40	1	501(d) Apostolic and religious organization	501(d) Apostolic and Religious Org.

<u>Ruling Date Data</u>	<u>Ruling Date Data Form</u>	<u>Ruling Date</u>
199510	YYYYMM (year and month)	10/1995

[Sign In](#) | [Cart](#) | [Newsletter](#)

1-800-MELISSA

[Products](#)[Solutions](#)[Downloads & Trials](#)[Support](#)[Resources](#)

**Ouch!**  
**Your last mailing didn't do so well?**  
Want to try again with the help of an **Address Verification Tool?**  
**Request your risk-free trial now!**

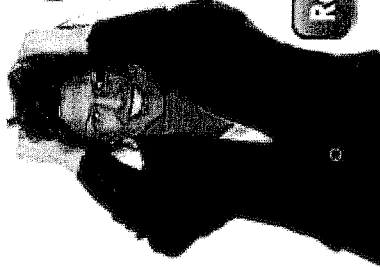
## Nonprofit Organization Lookup

Enter a 5-digit ZIP Code, organization name or 9-digit Tax ID

HEARTLAND HUTTERIAN BRETHREN INC	
In Care of Name	JOE WIPF JR PRES
Address	2171 100TH AVE LAKE BENTON, MN 56149-1122 MapG MapY MapV
IRS Subsection	501(d) - A religious and apostolic association.
Type of Organization	Corporation
Deductibility	Contributions are NOT deductible
Tax I.D. Number	931052252
Exempt Since	10-1995
Form 990 Requirement	Not required to file 990
Activity #1	Other religious activities
Share with others information about this Nonprofit - like the web site, e-mail address, how to donate or any corrections to the data shown. <input type="button" value="Post a Message"/>	

## Messages

[How Can We Improve this Lookup?](#) | [Email to a Friend](#) | [Lookups Forum](#) | [Terms of Use](#)

**Ouch!****Your last mailing didn't do so well?**

Want to try again with the help of an Address Verification Tool?

**Request your risk-free trial now!**

## Nonprofit Organization Lookup

[Help](#)[Index](#)

Enter a 5-digit ZIP Code, organization name or 9-digit Tax ID

HEARTLAND HUTTERIAN BRETHREN INC	
In Care of Name	JOE WIPF JR PRES
Address	2171 100TH AVE LAKE BENTON, MN 56149-1122 MapG MapY MapV
IRS Subsection	501(d) - A religious and apostolic association.
Type of Organization	Corporation
Deductibility	Contributions are NOT deductible
Tax I.D. Number	931052252
Exempt Since	10-1995
Form 990 Requirement	Not required to file 990
Activity #1	Other religious activities
Share with others information about this Nonprofit - like the web site, e-mail address, how to donate or any corrections to the data shown.	
<input type="button" value="Post a Message"/>	

Messages

[How Can We Improve this Lookup?](#) | [Email to a Friend](#) | [Lookups Forum](#) | [Terms of Use](#)

**MELISSA DATA**

1-800-MELISSA

[Products](#)[Solutions](#)[Downloads & Trials](#)[Sign In](#)[Cart](#) | [Newsletters](#) | [Search](#)[Support](#)[Resources](#)[Lookups](#)[Contact Us](#)[Free Lookups](#)[Home](#) > [Lookups](#) > **Nonprofit Organization Lookup**[Help](#)**Got Contact Data? ✓ Verify it.**

Verify Addresses, Phone Numbers, &amp; Emails Addresses in Real-Time.

[Verify Data Now](#)Enter a 5-digit ZIP Code,  
organization name or 9-digit Tax ID  
[Submit](#)

Use this LookUp to:

- Find information on over 1.4 million registered nonprofit organizations in the United States
- Get organization name, assets, income, and IRS subsection
- Select organization for contact name and address, type of foundation and organization
- Get deductibility status, classification, Form 990, and more

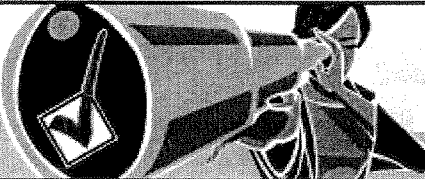
**HEARTLAND HUTTERIAN BRETHERN INC**In Care of Name **JOE WIPF JR PRES****2171 100TH AVE**Address **LAKE BENTON, MN 56149-1122**[MapG](#) [MapY](#) [MapV](#)IRS Subsection **501(d) - A religious and apostolic association.**Type of Organization **Corporation**Deductibility **Contributions are NOT deductible**Tax I.D. Number **931052252**Exempt Since **10-1995**Form 990 Requirement **Not required to file 990**Activity #1 **Other religious activities**

Share with others information about this Nonprofit - like the web site, e-mail address, how to donate or any corrections to the data shown.

[Post a Message](#)[Messages](#)[How Can We Improve this Lookup?](#) | [Send to a Friend](#) | [Lookups Forum](#) | [Terms of Use](#)

**We Help You  
Grow Your  
Business**

Click Here For Your  
**Risk Free Trial**  
Send 100 Emails FREE!



**VerticalResponse**  
Email Marketing  
Play Again

[Home](#) | [About Us](#) | [myManta](#) | [FAQ](#) | [View Cart](#) | [My Profile](#)

Login:

Not a member? [Learn more.](#)

Tuesday, Oct. 20, 2009  
**63,778,867** companies

**NEW! List Your Company Above  
the Competition.**

COMPANIES: U.S., Australia, Canada, U.K., Worldwide

RESOURCES: Video, Jobs, Reports, White Papers | JOIN US: Twitter, Facebook

U.S. business name, category, location...

**Search**

BUSINESS CENTERS: Small Biz, Sales Expertise, HR, Travel, Career, Tech

U.S. » [Lake Benton; MN](#) » [Associations/Non-Profits](#) » [Religious Organizations](#) » [Brethren Church](#) »  
[Heartland Colony](#)

## Heartland Colony (Heartland Hutterian Brethren Inc\*)

Is this your company?

2171 100th Ave  
Lake Benton, MN 56149-1122

**Phone:** (507) 368-9589

**Website:** Information not found (?)

[Claim This Profile](#)

These Members Work Here

 **Do you?**  
SAY SO

Ads by Google

[Siemens Home Wind Power](#) Highly efficient, solid & reliable wind power solutions - Siemens.

[Farm Fresh To You](#) Organic produce grown on our family farm with delivery to your home.

[Farms For Sale](#) Search 1000's of Farm Real Estate Listings For Sale in Your Area.

The ads are not affiliated with Heartland Colony

### Business Categories

Farms in Lake Benton, MN  
Religious Organization\*, All Other Miscellaneous Crop Farming

### Heartland Colony Business Information [Claim This Profile](#)

Heartland Colony is a private company categorized under Brethren Church and located in Lake Benton, MN. Our records show it was established in 1990\* and incorporated in Minnesota\*. Current estimates show this company has an annual revenue of \$5 to 10 million and employs a staff of approximately 50 to 99.

### Also Does Business As

Heartland Hutterian Brethren Inc\*


### HQ, Branch or Single Location

Single Location

**Annual Sales** (Estimated) [View Details](#)**Employees** (Estimated)

50 to 99

D&amp;B: 20\*

**SIC Code and Description** [View Details](#)**NAICS Code and Description**

111998, All Other Miscellaneous Crop Farming

**Products, Services and Brands**

Information not found (?)

**State of Incorporation**

Minnesota\*

**Years in Business**

19\*

**Company Contacts**

Contact Name	Gender	
<a href="#">Alvin Wipf, Manager</a>	M	<a href="#">Claim This Profile</a>

Click on the [reports tab](#) at the top of the page to research company background, detailed company profile, credit and financial reports for Heartland Colony.

\*Data provided by D&B. © Dun and Bradstreet, Inc. All rights Reserved.

**Related Links**

Other companies named Heartland Colony

Companies in this industry

Jobs in Lake Benton, MN

**Recent Visitors**

**YOU**  
JOIN NOW



**Bill Murray**

Companies by Location: Lake Benton, Minnesota

## Hutterite Surnames

Subject: Heartland Hutterian Brethren Inc, Lake Benton, MN 56149

Different Business Names: (no data)

A comparison of Hutterite surnames from the webpages 'Founding families' and 'Surnames of Founding Families' at The Federation of East European Family History Societies (FEEFHS) website [[www.feefhs.org](http://www.feefhs.org)] and surnames from USDA ownership shares data for: 'Heartland Hutterian Brethren Inc'. The USDA data is from the Environmental Working Group's Farm Subsidy Database at the website [[www.ewg.org/agmag](http://www.ewg.org/agmag)].

### Notes:

- 1) The webpage URL for 'Founding families' is:  
[<http://www.feefhs.org/links/hutterites/families.html>].
- 2) The webpage URL for 'Surnames of Founding Families' is:  
[<http://www.feefhs.org/links/hutterites/surnames.html>].
- 3) The list of Hutterite surnames includes Hutterite surnames found with Hutterite colonies as USDA farm subsidy recipients but does not include all Hutterite surnames.

<u>Hutterite Surnames</u>	<u>Surnames from USDA ownership shares data</u>	<u>Surnames that match both lists</u>
Decker	Hofer	Hofer
Entz	Wipf	Wipf
Glanzer		
Gross		
Hofer		
Kleinsasser		
Maendel (Mandel)		
Miller		
Stahl		
Tschetter		
Waldner		
Walter		
Wipf		
Wollman		
Wurtz		
Wurz		

### Comparison data

Name: Heartland Hutterian Brethren Inc

Location: Lake Benton, MN 56149

Different Business Names: (no data)

Hutterite Surnames: Hofer, Wipf

Data Timeframe: 1995-2006

[Home](#)[Notifications](#)[Reach Us](#)Keep our server humming, [Donate](#).

## HUTTERITE CONTACTS



### GO TO MAIN INDEX

- U Altona, Henderson, MN 56044
- S Big Stone, Graceville, MN 56240-4715
- U Elmendorf, Mountain Lake, MN 56159
- S Haven, Dexter, MN 55926
- S Heartland, Lake Benton, MN 56149
- S Leaning Oak, Gully, MN 56646
- S Lismore, Clinton, MN 56225
- S Neuhof, Mountain Lake, MN 56159-9752
- S Spring Prairie, Hawley, MN 56549-9094
- S Starland, Gibbon, MN 55335

Heartland Schmiedeleut Group 2

2171 - 100th Ave

Lake Benton, MN 56149

Established From Plainview, Leola, SD 57456

**Manager Alvin Wipf**

507-368-9589

**fax 9518**

**Minister Joseph Wipf**

507-368-9633

**fax 4645**

**School 9585**

**Switchboard 507-368-4601**

**2** Carpenter Shop

**3** Electric Shop

**1** Farm Boss

**4** Hog Barn

**6** Mechanic Shop

**5** Feed Mill

**7** Turkey Starter Barn

**8** Turkey Finisher Barn

Missing info? Suggestion? Let us know:

Contact Information for Hutterite colonies as USDA farm subsidy recipients  
Subject: Heartland Hutterian Brethren Inc, Lake Benton, MN 56149

Contact Information for [Heartland Hutterian Brethren Inc, Lake Benton, MN 56149]

1) IRS EO/BMF data

Address:

Heartland Hutterian Brethren Inc  
2171 100th Ave  
Lake Benton, MN 56149-1122

2) Manta data

Phone: [507-368-9589]

Address:

Heartland Colony/Heartland Hutterian Brethren Inc  
2171 100th Ave  
Lake Benton, MN 56149-1122

3) Hutterite Directory

Phone:

- 1) Joseph Wipf, Minister: [507-368-9633]
- 2) Alvin Wipf, Manager: [507-368-9589]
- 3) Switchboard: [507-368-4601]

Address:

Heartland Colony  
2171 - 100th Ave  
Lake Benton, MN 56149

Address verification results from [www.melissadata.com]:

1) For (1) IRS EO/BMF data:

Address not verified. The suite or apartment number is missing.

2) For (2) Manta data:

Address not verified. The suite or apartment number is missing.

3) For (3) Hutterite Directory:

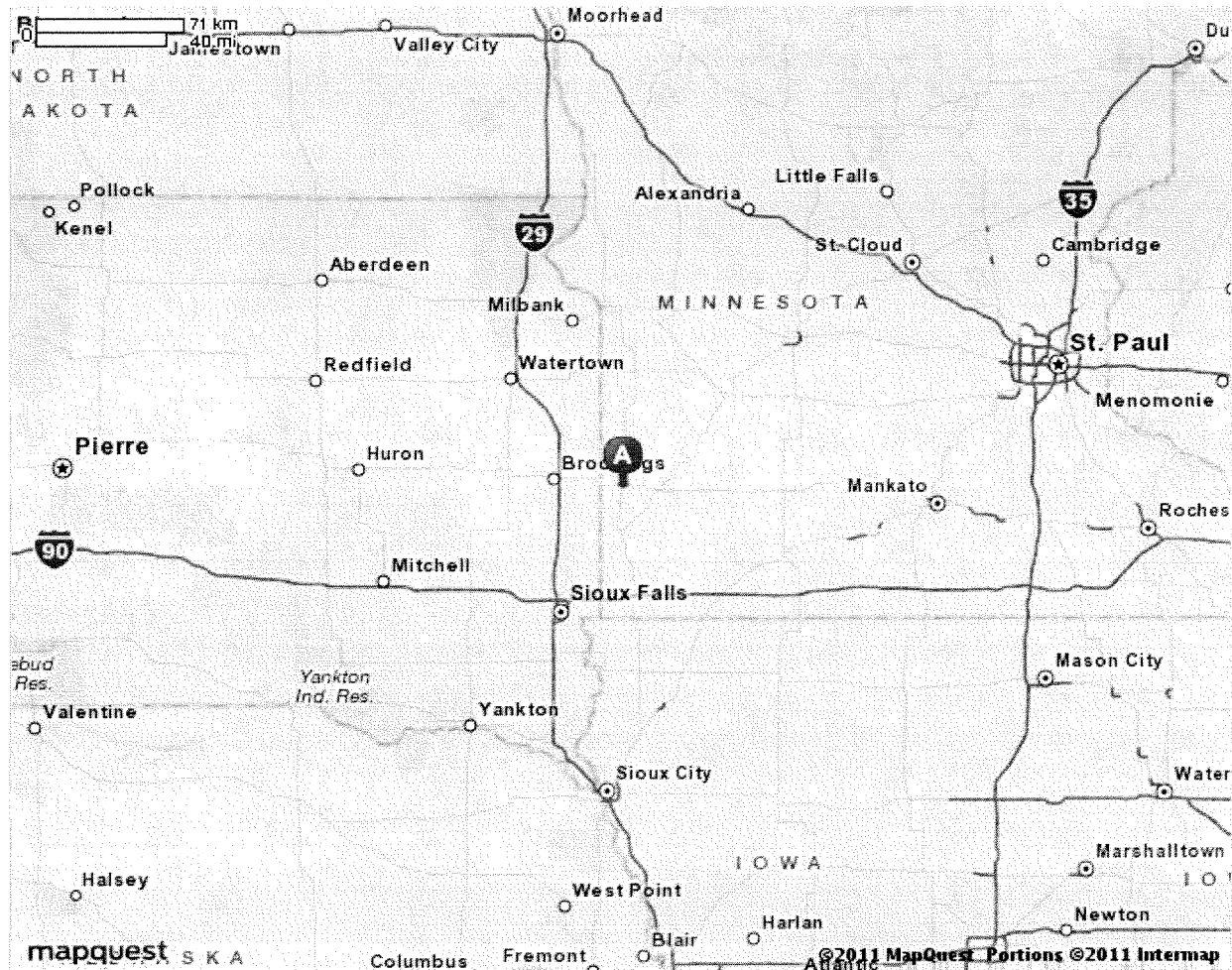
Address not verified. The suite or apartment number is missing.



# MAPQUEST.

## Map of Lake Benton, MN

Notes



All rights reserved. Use subject to License/Copyright | [Map Legend](#)

Directions and maps are informational only. We make no warranties on the accuracy of their content, road conditions or route usability or expeditiousness. You assume all risk of use. MapQuest and its suppliers shall not be liable to you for any loss or delay resulting from your use of MapQuest. Your use of MapQuest means you agree to our [Terms of Use](#)